

MODS

Observing Scripts

Document Number: OSU-MODS-2011-002
Version: 1.3.2
Date: 2013 January 20
Prepared by: R.W. Pogge The Ohio State University



Distribution List		
Recipient	Institution/Company	Number of Copies
Richard Pogge	OSU	[author]
Mark Wagner	LBTO	1 (PDF)
Rebecca Stoll	OSU	1 (PDF)
Chris Kochanek	OSU	1 (PDF)
Dave Thompson	LBTO	1 (PDF)
Olga Kuhn	LBTO	1 (PDF)

Document Change Record			
Version	Date	Changes	Remarks
0.x	2011-07-20		First formal draft
0.5	2011-08-04	Numerous	First Beta Release
1.0	2011-08-07	Wording and mistakes	First Public Release
1.1	2011-12-10	Updates, text reorganization	Second Public Release
1.2	2012-09-20	Observer comments after the 1st year of science operations	Third Public Release
1.3	2013-01-18	Updates to procedures, added more worked examples	Fourth Public Release

Contents

1	Introduction	6
1.1	Scope	6
1.2	Reference Documents.....	6
1.3	List of Abbreviations and Acronyms	6
1.4	Organization of this Manual.....	7
1.5	Changes from Previous Versions	7
2	Overview.....	8
2.1	The MODS Command Script Interface.....	8
2.2	A Typical Observing Sequence	9
3	Observing with MODS Scripts.....	10
3.1	acqMODS – Execute a target acquisition script.....	10
3.2	modsAlign – Align the target with the slit mask.....	11
3.2.1	Long-Slit Target Alignment	11
3.2.2	Multi-Slit Target Alignment.....	13
3.2.3	Spectrophotometric Wide Slit Alignment	16
3.2.4	Recovering Mask Alignment After Telescope Failures	17
3.3	execMODS – Execute an observation or calibration script.....	17
3.4	Restarting an Observing or Calibration Script	18
3.4.1	Restart from a command number	19
3.4.2	Restart from a functional block label	20
3.4.3	Run only the commands within a functional block	20
3.5	Scripts of Scripts.....	20
4	Script Preparation Tools (modsTools).....	22
4.1	Downloading and installing the modsTools package.....	22
4.2	Start a new MODS observing project – modsProject.....	23
4.3	Make a target acquisition (.acq) script – mkMODSAcq	24
4.3.1	Basic Use	24
4.3.2	Guide Star Verification and Selection	25
4.3.3	Making a Finding Chart.....	26
4.4	Make an observing (.obs) script – mkMODSObs	26
4.5	Make an imaging (.img) script – mkMODSImg	27
4.6	Make multi-object observing scripts from MMS mask files – mms2obs	28
4.7	Worked Examples	29
4.7.1	Long-Slit Observing Script Example	29
4.7.2	Multi-Slit Observing Script Example	35
5	MODS Script Details.....	38
5.1	Script Basics	38
5.1.1	Script Execution Mode.....	38
5.1.2	Functional Blocks.....	39
5.1.3	Instrument and Telescope Commands.....	40
5.1.4	Script Flow Control and Printing Commands	40

5.1.5	End Command	41
5.1.6	Script Comments	41
5.2	Target Acquisition (.acq) Scripts.....	41
5.2.1	Acquisition Mode (ACQMode).....	43
5.2.2	Archive: Block.....	43
5.2.3	Target: Block	43
5.2.4	Instrument: Block	44
5.2.5	Acquire: Block.....	45
5.2.6	Blind Offsets to Faint Targets	46
5.3	Science Observing (.obs) Scripts.....	46
5.3.1	Observation Mode (OBSMode)	47
5.3.2	Instrument: Block	47
5.3.3	Execution (Exec:) Block.....	48
5.3.4	Exec: Block Commands	49
5.4	Imaging (.img) Scripts.....	50
5.5	Calibration (.cal) Scripts.....	51
5.5.1	Calibration Mode (CALMode).....	51
5.5.2	Calibration Archive: Block.....	52
5.5.3	Internal Calibration Lamps.....	52
5.5.4	Bias and Dark Calibrations.....	53
6	Example Scripts	55
6.1	Long-Slit Target Acquisition and Observing Scripts	55
6.2	Multi-Object Spectrum Acquisition, Observing, and Calibration.....	56
6.3	Flux Standard Star Acquisition and Observation	59
6.4	Bias Calibration Frames	61
6.5	Grating Wavelength Calibration Lamps.....	62
6.6	Imaging Script (ugriz standard star field imaging).....	64
6.7	Long Slit Spectra of a QSO dithering along the slit.....	65
7	Script Command Summary	68
7.1	Script Execution Mode Commands.....	68
7.1.1	ACQMode – Target Acquisition Mode	68
7.1.2	OBSMode – Observing Mode	68
7.1.3	CALMode – Calibration Mode.....	68
7.1.4	SETUPMODE – Instrument Setup Procedure Mode.....	69
7.2	LBTO Data Archive Commands	69
7.2.1	PARTNER – set the LBTO Archive Partner ID header keyword.....	69
7.2.2	PROPID – set the LBTO Archive Proposal ID header keyword	69
7.2.3	PI_NAME – set LBTO Archive project PI header keyword.....	69
7.3	Target Preset Commands.....	69
7.3.1	OBJNAME – set the Object Name of the science target	70
7.3.2	OBJCOORDS – set the Science Target RA and Dec coordinates.....	70
7.3.3	GUINAME – set the name of the guide star	70
7.3.4	GUICCOORDS – set the Guide Star RA and Dec coordinates.....	70
7.3.5	POSANGLE – set the instrument celestial position angle	70
7.3.6	ROTATOR – set the rotator position angle and mode (deprecated).....	71

7.3.7	AGWFILT – select the AGw guide camera filter	71
7.3.8	PRESET – set the Telescope Preset mode	72
7.4	Instrument Configuration Commands	72
7.4.1	INSTCONFIG – Select the instrument optical configuration.....	72
7.4.2	SLITMASK – Select the slit mask used for an observation or acquisition.....	72
7.4.3	FILTER – Select a camera filter	73
7.4.4	LAMP – Select and Control Calibration Lamps.....	73
7.5	Exposure Control Commands.....	74
7.5.1	OBJECT – Setup to take an object exposure	74
7.5.2	BIAS – Setup to take an bias (zero) frame.....	74
7.5.3	FLAT – Setup to take an flat-field exposure	74
7.5.4	SKY – Setup to take a twilight sky flat-field exposure.....	75
7.5.5	COMP – Setup to take a wavelength comparison lamp exposure.....	75
7.5.6	STD – Setup to take a flux calibration object exposure.....	75
7.5.7	DARK – Setup to take a dark exposure	75
7.5.8	EXPTIME – Set the single-image exposure (integration) time	76
7.5.9	NIMGS – Set the number of exposures to acquire	76
7.5.10	CCDBIN – set the CCD on-chip binning factor	76
7.5.11	ROI – Set the CCD subframe readout (Region-Of-Interest) mode	77
7.5.12	GO – Start an integration sequence.....	77
7.5.13	DGO – Start an integration sequence on both channels.....	77
7.6	Target Acquisition Commands.....	78
7.6.1	ACQCamera – Select the camera to use for acquisition images	78
7.6.2	ACQFilter – Select the camera filter for acquisition images	78
7.6.3	ACQExpTime – Set the acquisition image exposure time.....	78
7.6.4	ACQROI – Set the CCD readout ROI for acquisition images	78
7.6.5	AcqGO – Take a field (no slit) acquisition image	78
7.6.6	SlitGO – Take a thru-slit acquisition image	78
7.7	Script Flow Control and Printing Commands	79
7.7.1	PAUSE – Pause execution of a script	79
7.7.2	PRINT – Print a message to the terminal screen	79
7.7.3	SLEEP – Stop script execution and sleep for a time interval.....	79
7.7.4	WFSWait – Pause execution of a script to wait for WFS convergence	79
7.8	Telescope Commands.....	80
7.8.1	OFFSET – Offset the telescope in celestial (RA,Dec) coordinates	80
7.8.2	OFFSETXY – Offset the telescope in the Slit XY coordinates	80
7.8.3	UPDATEPOINTING – Set (“Zero”) the Telescope Pointing Reference.....	81
7.8.4	GPAUSE – Pause guiding and active optics but keep tracking open loop.....	81
7.8.5	GRESUME – Resume guiding and active optics after a GPAUSE	81

1 Introduction

1.1 Scope

This document describes how to create and use observing scripts for acquiring scientific data and associated calibration data with the Multi-Object Double Spectrographs (MODS) at the LBT. This includes discussion of target acquisition and slit-mask alignment tools, and script creation tools.

1.2 Reference Documents

1. *MODS1 Laboratory Acceptance Test Report*, R. Pogge, et al., OSU-MODS-2009-002.
2. *LBTO Coordinate System Description*, LBT 002s105b, D. Miller, 2010 Jan 22

1.3 List of Abbreviations and Acronyms

Abbreviation	Description
ACQ	Acquisition
ADC	Atmospheric Dispersion Corrector (as in MODS doesn't have one...)
AGw	Acquisition/Guide/Wavefront Sensor unit
ASCII	American Standard Code for Information Interchange
CAL	Calibration
CCD	Charge-Coupled Device
DETXY	Detector XY Coordinates (actually Rotator-angle invariant PCS_XY)
FITS	Flexible Image Transport System
GCS	Guider Control System
GUI	Graphical User Interface
IMCS	Image Motion Compensation System
LBT	Large Binocular Telescope
LBTO	LBT Observatory
LUCI	The instrument formerly known as LUCIFER
MMS	MODS Mask Simulator (multi-slit mask design program)
MODS	Multi-Object Double Spectrographs
MOS	Multi-Object Spectroscopy
OBS	Observation
OSU	The Ohio State University
PCS	Pointing Control System
ROI	Region of Interest
SDSS	Sloan Digital Sky Survey
TBD	To Be Determined
TCS	Telescope Control System
WFE	Wavefront Error
WFS	Wavefront Sensor

1.4 Organization of this Manual

The manual is organized top-down. The following section describes how scripts are used for observing, followed by a description of the MODS script preparation tools (`modsTools`). The manual then describes the detailed inner-workings of MODS scripts, presents a series of example scripts (most generated using the `modsTools` programs to create them in whole or as partial templates to be filled in), and ends with a detailed description of the MODS scripting commands themselves.

1.5 Changes from Previous Versions

Version 1.3 is an incremental update of the MODS scripts preparation tools, incorporating changes and suggestions from observers and LBTO science operations personnel as we've gained experience observing with MODS1 during regular partner observing.

Specific changes include:

1. `mms2obs` now creates a template calibration (`.cal`) script to take spectral flat field and comparison lamp spectra for a multi-object slit mask. The `--nocal` option suppresses creation of the `.cal` script. See §4.6.
2. We make greater use of the `modsView` program for visualizing target acquisition fields. See the `modsView` website:
www.astronomy.ohio-state.edu/MODS/ObsTools/modsView
for download and instructions for installing and using it.
3. Because guide star selection and the need for good, clear finding charts with orientation and scale indicated has emerged as an essential element of efficient observing at the LBT (and lack of these has proven to be one of the biggest sources of grief for the on-site observers), we've added expanded discussion in §4.3 as these relate to creation of `.acq` scripts.
4. Worked examples of long-slit and multi-slit script preparation using `modsTools` and `modsView` have been added to §4.

2 Overview

The LBT's Multi-Object Double Spectrographs (MODS1 and MODS2) are low- to medium-resolution optical two-channel CCD spectrographs covering the 350-1000nm wavelength range. They allow direct imaging in a 6×6-arcminute field of view and long-slit and multi-slit grating and prism spectroscopy.

MODS is a complex instrument with two spectral channels split by a dichroic, a 24-position slit mask cassette, 28 remotely-operated mechanisms, a 2-channel closed-loop IR-laser based flexure compensation system, and dozens of sensors and control systems. All these functions must be closely integrated with the operation of the LBT control systems.

The most efficient way to use MODS is with its command scripting interface. This document describes the scripting interface, including many worked examples, and introduces the MODS script creation tools that should help observers craft efficient MODS observing programs.

2.1 The MODS Command Script Interface

MODS scripts are plain ASCII text files containing lists of instrument and telescope commands to be executed in order from the start to the end of the file. All functions of the MODS Control Panel are available via the scripting interface.

Scripts help maximize observing efficiency by automating routine observing tasks: telescope pointing, target acquisition, instrument configuration, and data acquisition. Scripts take care of the fine details of operating MODS and choreograph interactions with the LBT control systems. Properly applied, observing scripts will save observers time that might otherwise be lost to errors resulting from trying to remember all of the instrument and observing setup steps late at night or after a long hiatus from observing with the LBT.

There are five types of MODS scripts, distinguished by their filename extensions:

1. **Target Acquisition (.acq)** scripts that point the LBT to a new spectroscopic target, setup the AGW for guiding and active optics, and take through-slit and field acquisition images for alignment of the target with the slit mask.
2. **Observing (.obs)** scripts that acquire science images of a spectroscopic target once it has been aligned with the slit mask.
3. **Imaging (.img)** scripts, a hybrid of .acq and .obs scripts, for direct imaging observations that do not require alignment with a slit mask.
4. **Calibration (.cal)** scripts that acquire bias, flat field, and wavelength calibration data.
5. **Instrument Procedure (.pro)** scripts that perform instrument setup, shutdown, and housekeeping tasks.

Scripts are executed using special “script engines”: programs run in Linux terminal shells that read and process the script files and then execute the script commands in a prescribed sequence. There are two script engines for MODS:

acqMODS – executes target acquisition (.acq) scripts

execMODS – executes observing, calibration, and instrument procedure scripts

This division recognizes the different requirements of target and data acquisition for spectroscopy: modern active-optics telescopes require very close choreography between telescope, instrument, and guiding/active optics systems during target acquisition, but once science data acquisition begins most of the activity is centered on the instrument and consists primarily of monitoring the exposure progress.

MODS scripts are highly reentrant: an observing script interrupted by errors or other problems can be restarted from any point within the script without editing the source file. The MODS script execution engines also feature robust error trapping and a flexible point-of-fault recovery (abort/retry/ignore) facility to notify observers of problems and provide pathways to quick resolution.

To help observers create MODS scripts, the `modsTools` suite of script preparation tools are available for observers to install on their computers. These tools create scripts that can be used as-is or as templates for crafting more sophisticated observing sequences. They ensure that observers start with syntactically correct script files as they prepare for MODS observing.

2.2 A Typical Observing Sequence

For each MODS spectral target you create two scripts: an acquisition (`.acq`) script to point the telescope and align the slit mask with the target, and an observing (`.obs`) script that acquires the science data. Imaging observations don't require detailed alignment with a slit mask, so a single hybrid imaging (`.img`) script is used to point the telescope and take images.

Consider a long-slit grating spectral observation of a $z=6.5$ QSO. You would create two scripts for this target:

1. `j1151.acq` – target acquisition script (thru-slit and field images)
2. `j1151.obs` – long-slit spectral observation script

At the telescope, you would execute the observation following these steps:

1. Point the telescope and take thru-slit and field images after locking on the guide star:
`acqMODS j1151.acq`
2. When `acqMODS` pauses, use the `modsAlign` program (§3.2) to align the target with the slit using the two acquisition images in the `/newdata` directory:
`modsAlign -l mods1r.20110929.0021.fits mod1r.20110929.0022.fits`
... mark the slit and target, then accept and execute the computed offset ...
3. Resume `acqMODS` from its paused state, and it will take a confirmatory thru-slit image to make sure the target is where you want it on the slit.
4. Reconfigure MODS for spectroscopy and start the science integrations:
`execMODS j1151.obs`
...

And so on...

Both long-slit and multi-slit spectroscopy should be a straightforward 3-step process like that above: acquire the target, align the targets with the slit, start taking science data. If problems arise, acquisition and observation scripts are fully reentrant, allowing flexible resumption of observing once the root problem has been addressed.

3 Observing with MODS Scripts

At the telescope, the MODS acquisition and observing scripts are executed using the following programs:

acqMODS – execute target acquisition and mask alignment (.acq) scripts

execMODS – execute observing (.obs and .img) and calibration (.cal) scripts

Additional MODS script, observing, and command tools are

modsAlign – align a target with the slit mask using acquisition images taken with an .acq script (computes and executes the telescope offset and rotation).

listMODS – list the contents of an MODS script, providing line numbers and block labels for script restart.

A common feature of all of these programs is that if invoked without command arguments they will print a full usage message reminding you of the command syntax and options.

IMPORTANT:

At the telescope, **acqMODS** and **execMODS** require that the MODS Control Panel GUI is running and the instrument initialized and ready. Once the instrument and telescope are live, **one and only one observing console and account must be used to run these programs.** Attempting to execute scripts from two different consoles will result in command conflicts and confusion, the risk being loss of time rather than damage to the instrument, but no safety measures are 100% guaranteed.

For safety these programs should never be executed by a remote login except under locally supervised circumstances.

3.1 acqMODS – Execute a target acquisition script

acqMODS executes a target acquisition script, pointing the telescope and taking acquisition images needed for aligning targets with the slit mask:

```
acqMODS [options] file.acq
```

the options are:

```
-n    dry-run the acquisition w/o execution (alias --dryrun)
-a    only run the acquisition image sequence (alias --acquire)
-p    only load coordinates and preset the telescope (alias --preset)
-i    only configure the instrument (alias --inst)
-l    only load target coordinates but don't execute the preset
      (alias --load)
```

The options provide ways to execute only portions of the script, but generally **acqMODS** is run without options. For example:

```
acqMODS ngc1234_1s.acq
```

will execute the named acquisition script from start to finish. Acquisition progress will be printed to the terminal screen.

If there are faults, **acqMODS** will print the error message and give you the option to abort, retry, or ignore the error:

- abort** – stops the acquisition and returns to the shell prompt.
- retry** – attempts to re-execute the command that gave the error.
- ignore** – will ignore the error and execute the next command.

In a typical long-slit or multi-slit target acquisition, after the thru-slit and field images are taken, the script will pause and ask you to run the `modsAlign` program to align the targets with the slit mask (see §3.2). On resuming, the usual practice is to take a final, confirmatory thru-slit image to make sure you got the target(s) in the slit(s).

If something goes wrong at the alignment step, the usual response is to re-execute just the acquisition block of the script, rather than going through the considerable overhead of a full preset and instrument configuration. For example:

```
acqMODS -a ngc1234_ls.acq
```

will just execute just the Acquire: block of the script and re-take the thru-slit and field images and start over again with `modsAlign` again.

This is, however, inefficient, as the initial thru-slit image should not change much. A better way is to use MODS Control Panel's instrument dashboard GUI to extract the slit mask and take a new field image, then run `modsAlign` again, send a new offset, and put the mask back in and snap a confirmatory thru-slit image.

3.2 `modsAlign` – Align the target with the slit mask

`modsAlign` is a standalone Python program that will interactively lead you through the process of aligning targets with the slit mask. It launches a named ds9 image display and uses the PyRAF interface to IRAF to compute the offset and/or instrument rotational offset needed to align the mask with the targets, and executes the offset.

There are two alignment modes: **long-slit** and **multi-slit**.

The acquisition (`.acq`) script will point the telescope, acquire the guide star, and then acquire a pair of thru-mask and field images of your target. The raw data files will be in the `/newdata/` archive staging directory, and their filenames should be printed in the `modsDisp` monitor window (assuming you are running `modsDisp`, which you should be). By default, `modsAlign` will look in `/newdata/` for images if no explicit path is given. If aligning with a slit mask, you also need to have the MODS mask design (`.mms`) file for the mask at hand; long-slit mask alignment uses the name of the mask (e.g., `LS5x60x0.6`) to setup the mask parameters to use.

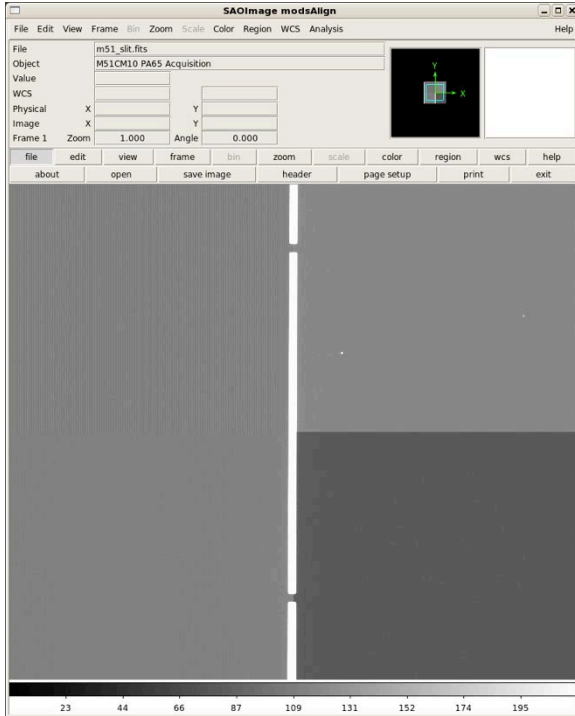
3.2.1 Long-Slit Target Alignment

To align a target with a long-slit mask, run `modsAlign` with `-l` (letter “l”) option:

```
modsAlign -l modslr.20110929.0041.fits modslr.20110929.0042.fits
```

The order of images matters: slit-then-field. If no path is given, `modsAlign` automatically looks for these files in the `/newdata/` archive staging directory.

`modsAlign` uses a dedicated ds9 window to display the thru-slit image:

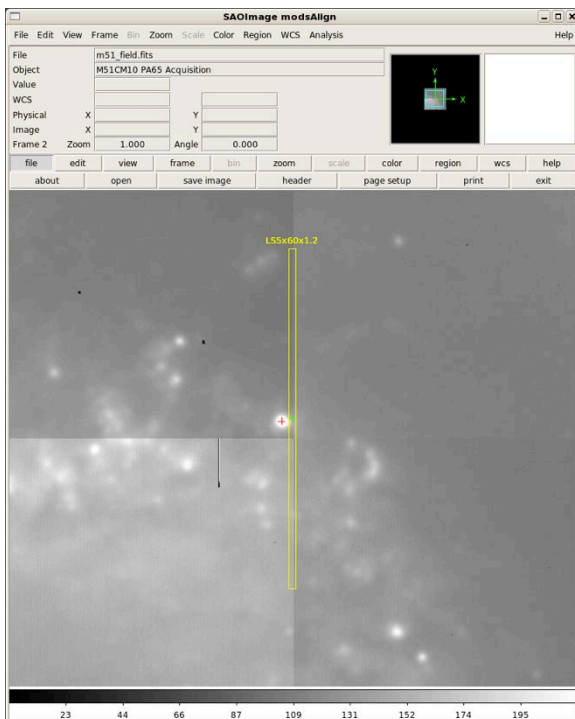


modsAlign will put up the interactive cursor on the ds9 display and ask you to mark the desired slit position for the target.

Mark this by putting the cursor on the desired position (to the nearest pixel) and then typing the “x” key to mark it.

Type “q” when finished to proceed to the next step.

After getting the cursor XY position, modsAlign computes the X-axis slit center from the image data and takes the Y-axis (along-slit) position of the cursor as given. It then displays the field image overlaid with a depiction of a slit segment using the position just computed, marking the desired slit position with a green +, as shown below:



modsAlign will then put the imexamine cursor on this display and ask you to mark the target object:

Type the “a” key to measure the centroid if the target is bright or uncrowded enough for imexamine to measure an accurate image intensity centroid.

If the target is too faint, crowded, or too saturated for accurate centroiding, mark its position by-eye to the nearest pixel with the “x” key.

Type “q” when done marking the target.

The target position (centroid or nearest pixel) will be marked with the red + on completing this step.

modsAlign then computes the telescope offset in DETXY coordinates that will move the target into the desired slit position, and then asks if you want to send the offset to the telescope.

Below is the screen output of the modsAlign run for the above images:

```
% modsAlign -l modslr.20110929.0041.fits modslr.20110929.0042.fits

** Mark where you would like the object on the slit with 'x'.
    and then press 'q' when finished.
Log file _modsalgn.log open
z1=213.1422 z2=445.09
 512.00  541.00  1823. 1842.0
z1=187.0711 z2=2784.

** Mark the target with an 'a' (or an 'x' if faint or saturated)
    and then press 'q' when done

Log file _modsalgn.log open
# COL LINE COORDINATES
# R MAG FLUX SKY PEAK E PA BETA ENCLOSED MOFFAT DIRECT
495.94 537.31 495.94 537.31
 40.83 10.05 958573. 1704. 2349. 0.09 81 3.31 20.95 14.12 22.79

Computed Slit Alignment Offset:
  dx:  1.852 arcsec
  dY:  0.454 arcsec

MODS Offset Command:
  offsetxy 1.852 0.454 rel

Send the offset to the Telescope (Y|N)?:
```

Answering **Y** will send the offset to the telescope, which can take a few seconds to execute and relock guiding. On return, you can resume the acquisition script and take a confirmatory thru-slit image to make sure your target is where you want it.

If you answer **N** at the prompt, no offset will be sent. This is what you do if the program computes a bad offset. Common causes of bad offsets are failure to centroid the target (too faint or too saturated), or failure to find the slit center (slit image too short and sky too faint).

If observing bright spectrophotometric standard stars, these stars are too bright to use the `-l` option as the short exposures needed to avoid severe saturation mean you can't see (or centroid upon) the slit in the thru-mask images. For aligning standard stars in the LS5x60 spectrophotometric wide slit, we provide the `-r` option, described in §3.2.3 below.

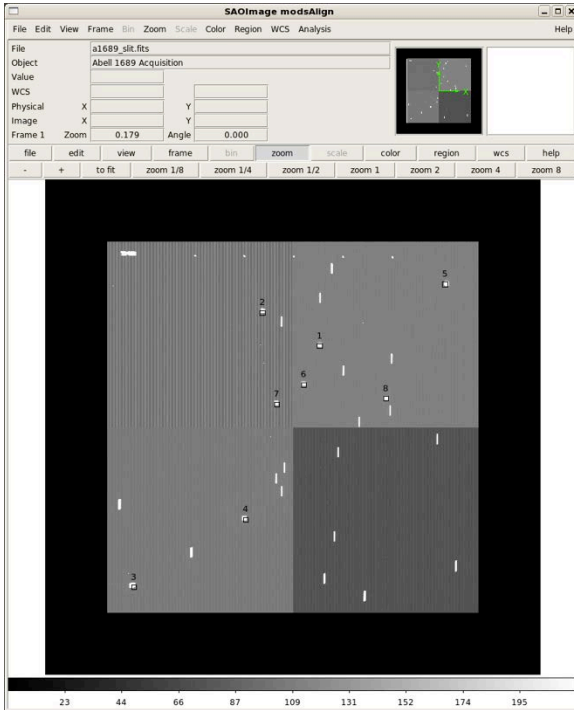
3.2.2 Multi-Slit Target Alignment

To align targets with a multi-slit mask, you use images of predefined reference stars selected when the mask was designed to determine the offset and rotation required. In this case you run modsAlign in its full mode, giving it the name of the .mms mask file and names of the thru-slit and field images:

```
modsAlign n1234.mms modslr.20110929.0041.fits modslr.20110929.0042.fits
```

The order of files matters: mms then thru-slit image then field image. `modsAlign` will look in the `/newdata` directory for the images if an explicit path is not given, but the `.mms` file needs to reside in the current working directory (later versions will look in a common MMS file path once that is defined by the observatory).

`modsAlign` will first display the thru-slit image, overlaying the positions of the alignment star boxes, numbering each box:



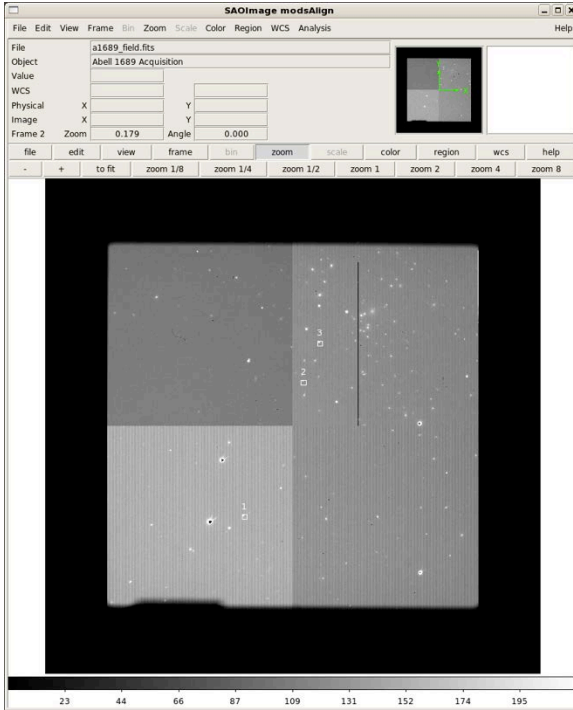
The reference star box positions shown are where it computes they should be from the coordinates given in the `.mms` file.’

The calculated positions will usually be displaced by 1-2 arcsec or so from the thru mask image (this is the typical displacement of the mask relative to the frame).

You are then instructed to mark at least two of the alignment boxes, in any order, by typing the “x” key.

Type “q” when done to move to the next step.

`modsAlign` will measure the centers of the reference star boxes in the thru-slit image and compute the transformation between the `.mms` file mask coordinates and CCD pixels. It then displays the field image with your selected alignment star boxes and rennumbers them starting with 1 in the order you picked them:



The selected reference star boxes are drawn in white.

modsAlign puts the IRAF imexamine cursor on the images and instructs you to measure each of the N reference stars on the field image by typing the “a” key.

These must be marked in number order 1..N as shown in the ds9 window.

Once you have finished measuring the stars, type the “q” key to proceed to the next step.

modsAlign then computes the XY offset and rotation offset needed to align the mask with target field, displays the results on the ds9 window by putting crosses on where the reference stars will land after the offset, and asks if you want to send offset to the telescope.

Here is an example run that was used for the images above up to the “send it?” prompt:

```
% modsAlign a1689.mms modslr.20110929.0041.fits modslr.20110929.0042.fits
z1=217.2555 z2=452.9805
```

```
** Mark Alignment Star Boxes to use with a 'x'.
   and then press 'q' when finished.
   *** You must mark at least two (2) boxes ***
```

```
Log file _modsalgn.log open
1135.26 784.17 3639.
1625.67 1898.73 3315.
1759.41 2221.95 3399.
z1=1469.197 z2=4442.
```

```
** Mark the center of each alignment star with an 'a'
   and then press 'q' when finished.
   Stars must be selected in the *SAME ORDER* as the boxes.
```

```
Log file _modsalgn.log open
1129.46 798.01 1129.46 798.01
 21.92 11.42 269842. 3557. 4067. 0.10 28 5.77 6.11 7.76 7.26
1621.39 1909.75 1621.39 1909.75
 21.96 12.34 115742. 3200. 1127. 0.17 -4 2.84 7.37 7.66 7.32
1754.89 2233.01 1754.89 2233 1
 16.01 10.37 709896. 3190. 15990. 0.03 -47 2.55 5.50 5.42 5.34
```

Computed Mask Alignment Offset:

```

dx:    0.713 arcsec
dY:   -1.545 arcsec
dPA:  -0.0717 degrees

```

```

MODS Offset Command:
  offsetpointing -0.0717  0.713 -1.545 detxy rel

```

Send the offset to the Telescope (Y|N)?:

After the offset is complete, you resume execution of the paused .acq script. A confirmatory thru-slit image will be acquired and displayed in the `modsDisp` real-time display window for the acquisition camera used (red or blue).

Inspect this confirmatory image. If the offset was successful, you should see the reference stars well-centered in the alignment boxes.

At this point you are ready to execute the multi-slit observations with confidence that you have all your targets aligned with the slits.

If not, you can re-run `modsAlign`, this time only giving it the name of the mms file and the single confirmatory thru-slit image – it will compute a refinement offset and execute it (unless the confirmatory image is so far off the alignment stars are not visible or easily measured).

IMPORTANT NOTE: If you refine the alignment by hand after an initial `modsAlign` run (e.g., by computing offsets and sending them via the GUI), you need to remember to press the “Absorb” button on the Telescope pane of the GUI dashboard (or issue an “`updatepointing`” command in the command window). This ensures that the final telescope position after all of your alignment offsets is “absorbed”, meaning the final position becomes the (0,0) reference position for all subsequent absolute offsets commands (e.g., dithering along the slit).

3.2.3 Spectrophotometric Wide Slit Alignment

Spectrophotometric standard stars are fairly bright and will saturate, sometimes severely when exposure times are long enough to also see the outline of the slit. This complicates alignment of these stars.

The `-r` option will instead allow you to use short exposures to avoid saturating the stars, and then align the star to a preset “reference” position on the acquisition image, measured to be the center of the LS5x60 spectrophotometric “wide slit” mask. Examination of a few dozen standard star acquisition images over a 6 month period showed that the optimal position in the wide slit varied only by at most 1-2 pixels out of the 40-pixel wide slit, so it was a robust procedure for the wide slit mask. It is less obvious it is as robust a method for the narrower slits, so is not recommended except with the LS5x60 slit mask.

The standard star acquisition procedure with `modsAlign -r` is as follows:

1. Take a field image (mask out) of the star with a short (1-2 sec) integration time.
2. Use “`modsAlign -r mods1r.20120524.0123.fits`” to start `modsAlign` with the field image.
3. Following the instructions, mark the center of the standard star with either “x” if saturated (eye-ball center) or “a” if a good centroid is possible.

`modsAlign` will compute the offset to the preset “best center” position for the LS5x60 slit and ask you to confirm it, like the `longslit (-1)` method described above.

3.2.4 Recovering Mask Alignment After Telescope Failures

After a successful alignment, `modsAlign` creates an ASCII text file named “`mods_lastOffset`” in the current working directory. This contains the offset applied (translation and rotation as needed). This can be used to recover the approximate target offset if you have to resend the target preset, e.g., to recover from loss of a guide star or after the telescope stops tracking because of a hardware fault (e.g., AO secondary RIP faults) that requires the operator cancel the telescope preset. The goal is to keep you from having to repeat a time-consuming re-alignment, as the telescope configuration should be close enough that you just need to resend the previous offset not measure it again from scratch.

The basic recover procedure is as follows if you need to resend the preset:

1. Stop the current integration, then readout and save what was observed up to the fault.
2. Make a copy of the original target acquisition script (e.g., `cp mytarget.acq recover.acq`)
3. Open the `mods_lastOffset` file and extract the command (e.g., `offsetxy ...` for long-slit, or `offsetpointing ...` for MOS).
4. Edit `recover.acq` to replace the contents of the Acquire: block with this block:

```
Acquire:
  offsetpointing -0.2807 -0.228 0.824 detxy rel
  SlitGO
```
5. Execute `acqMODS recover.acq` to re-send the offset, set the guide probe, and then apply the offset. The `SlitGO` command will take a confirmatory thru-slit image so you can verify that the offset succeeded and your mask is now re-aligned, or allow you to refine the alignment if needed.
6. If you are satisfied with the alignment issue an “`updatepointing`” command in the MODS GUI (or press the “Absorb” button in the Telescope pane on the GUI dashboard). This makes sure the new telescope position after your last alignment offset is the absolute (0,0) reference position for all subsequent absolute offsets.
7. Modify your observing script to change the exposures to acquire to resume your observations.

Since there are many possible variations on this procedure depending on which fault condition you are trying to recovering from, we have not automated this procedure.

3.3 `execMODS` – Execute an observation or calibration script

`execMODS` executes observing (`.obs` and `.img`) and calibration (`.cal`) scripts, configuring the instrument and acquiring science or calibration data as indicated. `execMODS` is also used to execute instrument setup procedure (`.pro`) scripts.

The command syntax is:

```
execMODS [options] scriptFile
```

Here `scriptFile` may be a `.obs`, `.img`, `.cal`, or `.pro` script file.

execMODS will not run target acquisition (.acq) files.

The command options are:

```
-n          dry-run the acquisition w/o execution (alias --dryrun)
-r N       run the script starting from command number N
           (alias -runfrom; use listMODS to get command numbers)
-e         run from the Exec: block to the end (alias --exec)
-f name    run from the name: block to the end (alias --fromblock)
-b name    run only the name: block commands (alias --runblock)
-u         run unattended and abort on errors (alias --unattended)
```

The options provide ways to execute only portions of the script, or restart from anywhere in the script after clearing a fault, or doing a quick dry-run to see what the script will do. More often `execMODS` will be run without options.

For example:

```
execMODS ngc1234_ls.obs
```

will execute the named observing script from start to finish. The instrument setup and data-acquisition progress will be printed to the terminal screen.

If there are faults, `execMODS` will print the error message and give you the option to abort, retry, or ignore the error, same as `acqMODS`. A difference is that it also prints the command number where the fault occurred, so you could restart the script from that command after clearing the fault (provided the fault wasn't with the script proper).

If the `-u` (`--unattended`) option is given, `execMODS` will abort on all faults rather than prompting for abort/retry/ignore. This option must be used if running a calibration (`.cal`) script unattended by an observer (e.g., starting biases or calibration lamp spectra then going to bed). This ensures that if there are problems, the instrument should be able to safe itself given nobody is around to do that. Unattended operation should be done with forethought as to what will happen if things go wrong – in particular, never run a new, untested, or unproven script in unattended mode.

3.4 Restarting an Observing or Calibration Script

MODS observing scripts are reentrant: it is possible to restart an observing script from any line or functional block, and you can run just the commands in a single functional block if needed. This property enables flexible and rapid resumption of observing after clearing fault conditions without requiring observers to modify an observing script at the telescope.

The `listMODS` program shows you the contents of an observing or calibration script as `execMODS` sees it, giving the breakdown into functional blocks and assigning command numbers (the order in which commands will be executed from start to finish).

For example:

```
% listMODS J1420.obs

*** Listing of J1420.obs ***

1: OBSMODE
```

```
    2: *nimgs 1*
Archive:
    3: PARTNER OSURC
    4: PROPID OSU_HighZ
    5: PI_NAME DeRosa
Instrument:
    6: instconfig dual grating
    7: *imcslock*
    8: slitmask LS5x60x1.2
Exec:
    9: object J1420-1620
   10: exptime 1200
   11: nimgs 6
   12: go
   13: end
```

A few things to note:

1. Blank line and comments are not listed (they are ignored in the same way `execMODS` ignores them)
2. Functional block labels are noted so you can see the breakdown of the script into functional blocks, but the labels themselves are not numbered.
3. A few commands in the listing begin and end with asterisks (*), as in lines 2 and 7 in the example above. These are examples of hidden commands that take care of some of the subtle details of how MODS operates (here, it makes sure the number-of-images is initialized as 1 and it puts in an explicit `imcslock` command after setting the instrument configuration). There are very few instances of hidden commands in scripts and these are the two most common.

`listMODS` is designed to only work with observing, calibration, and procedure scripts – acquisition scripts are different and `listMODS` will not work with `.acq` scripts.

You have three options for restarting a script:

1. Restart from a command number (`-r` or `--runfrom`)
2. Restart from a functional block label (`-f` or `--fromblock`)
3. Run only the contents of a single block (`-b` or `--runblock`)

3.4.1 Restart from a command number

When a fault occurs, `execMODS` reports the fault condition, the command at fault, and its line number (order of execution by the script). If you elect to abort, you can restart from that command number after clearing the fault by typing

```
execMODS -r 11 J1420.obs
```

Command numbers are not the same as line numbers: use `listMODS` to list the command numbers if you forgot to note the command number from the error message. In the example at the start of this section, the command above would restart execution with command 11 (`nimgs 6`).

3.4.2 Restart from a functional block label

To restart a script beginning with the first command in a functional block and continuing to the end of the script use the `-f` (`--fromblock`) option:

```
execMODS -f Instrument J1420.obs
```

Here the script will restart with the first command of the `Instrument: block` in `J1420.obs` and continue on until the end. Note that functional block labels are **case-insensitive** (see §5.1.2), **and that the colon (:) is omitted**. The colon is not part of the label name.

Since the most common recovery mode is to re-execute the `Exec: block`, we provide a convenience option, `-e`:

```
execMODS -e J1420.obs
```

This is equivalent to

```
execMODS -f Exec J1420.obs
```

3.4.3 Run only the commands within a functional block

The `-b` (or `--runblock`) option will run only the commands *within* a single functional block and then stop when the script reaches the next functional block or the end of the script, whichever comes first. For example

```
execMODS -b Instrument J1420.obs
```

will only run the `Instrument: block`, and stop before the start of the `Exec: block` in this example.

3.5 Scripts of Scripts

It is possible to run a number of scripts one after the other by embedding them within a shell script (bash, csh, etc.). For example, if you want to run three calibration scripts: `bias3k.cal`, `bias8k.cal`, and `prbias.cal`, you would create a shell script (this example is a csh script) that looks like this (called `doBias`)

```
#!/bin/csh
execMODS bias3k.cal
execMODS bias8k.cal
execMODS prbias.cal
exit 0
```

You would then run it from the shell by typing

```
% chmod +x doBias
% ./doBias
```

and away it would go. Technically, the shell script above is sloppy: there is no error trapping so that if any of the `.cal` scripts experienced a fault, it would freeze at an abort/retry/ignore prompt. A better implementation would be

```
#!/bin/csh
execMODS -u bias3k.cal
execMODS -u bias8k.cal
execMODS -u prbias.cal
exit 0
```

This shell script runs the three calibration scripts in unattended (-u) mode. It is still a little sloppy, as if any script throws a fault, it will move on and try the next script. This could lead to a fault cascade, with all the attendant difficulty that might involve.

In general, scripts of scripts should be used with care, and for standard calibrations we have a number of robust, tested examples available, and we will develop a library of such scripts as we gain experience with the instrument. Ask the LBTO support scientists for information about the most recent examples (these are always being refined on the basis of actual practice).

4 Script Preparation Tools (modsTools)

To help you create good, well-structured MODS scripts, we provide the `modsTools` script preparation tool package:

modsProject – Create a working directory for a new MODS observing project

mkMODSAcq – Create a template target acquisition (.acq) script from user inputs.

mkMODSObs – Create a template observing (.obs) script from user inputs.

mkMODSImg – Create a template imaging (.img) script from user inputs.

mms2obs – Create template acquisition, observing, and calibration (flat and comparison lamp) scripts from a MODS multi-object slit mask design (.mms) file.

In addition to these script preparation tools, there is one essential supplementary program

modsView – MODS target acquisition visualization program

This is a Python program that displays a sky view of a MODS acquisition script (e.g., created using `mkMODSAcq` or `mms2obs`) to help verify guide star selection, target alignment (especially after blind offsets), slit placement, etc. It can also be used to select a guide star. It is distributed separately from `modsTools` from the MODS website:

www.astronomy.ohio-state.edu/MODS/ObsTools/modsView/

It has its own online help pages and is not discussed in detail here, but we will give examples of its use as part of script preparation.

4.1 Downloading and installing the modsTools package

The `modsTools` package works on Linux (CentOS and Fedora) and Mac OS/X 10.6 (Snow Leopard) system. They are written in Perl 5, and do not require any special Perl modules beyond those in standard Perl 5.6 (the version installed on recent versions of Linux and Mac OS/X). The programs are designed to run in a terminal shell.

Download the latest version of the `modsTools` scripts from

www.astronomy.ohio-state.edu/MODS/ObsTools/modsTools/

This webpage gives links to the latest tar archive of the public release version, installation, use, and release notes. We will also collect a library of example scripts, and have a bug reporting form.

The `modsTools` package will install itself in its own directory, and you should put that directory into your default login shell's executable path so they can be run from any subdirectory without the need to type the full path. You do not need root or admin privileges to install `modsTools`.

Updates will be available before each semester early in the MODS science operations phase, so we advise you to check the website above before your observing run or at least at the start of each semester.

4.2 Start a new MODS observing project – modsProject

`modsProject` creates a working project directory and sets up the archive information that will be used in common for all MODS scripts created for the project:

```
modsProject -p partnerID propID
```

`modsProject` will create a `propID` subdirectory, and adopts the name of the directory as the `PROPID` archive keyword. It then asks the user a series of questions to setup the `.modsProject` file that will reside in this directory. This file is used by the other `modsTools` programs to automatically create scripts with the correct information in the Archive: blocks.

For example, to setup a MODS observing project named `OSU_HighZ` for an OSURC partner observer, the `modsProject` session would go something like this (% is the shell prompt, user responses to prompts are in **bold**):

```
% modsProject -p OSURC OSU_HighZ

** Welcome to the MODS Observing Project Setup Script **

modsProject will create and configure a project directory for
the OSU_HighZ observing project.

This is the directory where you will create all of the MODS
target acquisition and observing scripts for this project.

Is this what you want to do? <Y|N>: Y
Creating OSU_HighZ subdirectory...

    Using LBT Partner: OSURC
    PI Name(s)? Assef, Pogge, Kochanek

The /home/darkstar/pogge/MODS/OSU_HighZ directory has been configured.
Good Luck!

modsProject done.
```

You will now find a new directory name `OSU_HighZ` in your current working directory. This directory will have a single file in it named `.modsProject` that looks like this:

```
#
# MODS Project File
#
# Created 2011 Jun 12 - 17:40:52 UTC by pogge@darkstar
# Program: modsProject v0.1.2
#

# Parameters for the Archive: Block

PARTNER OSURC
PROPID OSU_HighZ
PI_NAME Assef, Pogge, Kochanek
```

You may, of course, edit this file to make changes (e.g., add a partner or change the PI list), but this is generally discouraged. For example, the `-p` option only lets you give one partner.

If you omit this option `modsProject` will prompt you for the `PARTNER` info so you can enter multiple partner IDs separated by commas.

4.3 Make a target acquisition (.acq) script – `mkMODSAcq`

4.3.1 Basic Use

This program is run in a MODS project directory created with `modsProject`. It uses the `.modsProject` file and your command-line inputs to create an acquisition script.

Before running `mkMODSAcq`, you need to have the following information in hand:

1. The RA and Dec of your target in J2000 coordinates
2. The RA and Dec of the guide star in J2000 coordinates
3. The instrument position angle (measured in degrees from North thru East).
4. The observing mode (imaging, longslit, or MOS), the slit mask, the camera and filter you wish to use for the acquisition images, and the exposure time.

The `mkMODSAcq` program will take these inputs and create a template `.acq` script in the current working directory:

```
mkMODSAcq [options] rootName
```

the options are:

```
-o objName      Object name (within 's if objName has spaces in it)
-c 'RA Dec'    Object RA/Dec coordinates, hh:mm:ss +dd:mm:ss, in 's
-p PA          Position Angle in degrees North thru East (default 0)
-g 'RA Dec'    Guide Star RA/Dec coords, hh:mm:ss +dd:mm:ss, in 's
-m obsMode     Observing mode, one of imaging, longslit, or mos
-a [Red|Blue]  Camera to use for acquisition images (default: Red)
-f filterID    Camera filter to use (default depends on -a)
-r ccdROI      Acquisition region of interest (defaults below)
-e [sec]       Acquisition exposure time in seconds (default: 60s)
-s slitID      Slit mask to use (required for -m longslit or mos)
-l width       Long-Slit width in arcsec for -m longslit.
                current choices are 0.3, 0.6, 0.8, 1.0, and 1.2
--agw filtID   Select a different AGW guide camera filter than the
                default Clear filter (F525LP, B_Bessel, ND1.0)
```

The default parameters are:

```
Red Camera, 60s and the r_sdss filter [-a red -e 60 -f r_sdss], and
the Clear AGW filter.
If -a Blue, the defaults are 60s and the g_sdss filter.
If -m Imaging or MOS, use a 3Kx3K ROI (full imaging field)
If -m longlist, use a 1Kx1K ROI (central 2-arcmin)
```

Examples:

```
mkMODSAcq -o 'NGC 1234' -c '12:13:14.5 +22:33:44' -g '12:13:16
+22:30:40' -m imaging n1234_img
```

creates an acquisition script named `n1234_img.acq` that uses the red camera to take a single 60-second field acquisition image with the red camera and `r_sdss` filter, and use the facility imaging stop slit mask at `PA=0°`.


```
mkMODSACq -o 'NGC 1234' -c '12:13:14.5 +22:33:44' -p 45 -g '12:13:15.6
+22:30:40' -m longslit -l 0.6 n1234_ls
```

creates `n1234_ls.acq` that uses longslit mode with the 0.6-arcsec wide longslit mask oriented along $PA=45^\circ$ and takes a sequence of 60-second thru-slit and field images of the target with the red camera and `r_sdss` filter. If instead you typed

```
mkMODSACq -o 'NGC 1234' -c '12:13:14.5 +22:33:44' -p 45 -g '12:13:15.6
+22:30:40' -m longslit -a blue -l 0.6 n1234_ls
```

it would take the acquisition images with the blue camera and the `g_sdss` filter.

```
mkMODSACq -o 'NGC 1234 Std' -c '12:13:14.5 +22:33:44' -p 45 -g
'12:13:15.6 +22:30:40' -m longslit -s LS60x5 -e 10 n1234_wide
```

will acquire the target through the LS60x5 spectrophotometric 5-arcsec wide-slit with the default red camera and `r_sdss` filter, but with a 10-second acquisition snapshot exposure time, creating the `n1234_wide.acq` script.

```
mkMODSACq -o 'NGC 1234 Std' -c '12:13:14.5 +22:33:44' -p 45 -g
'12:13:15.6 +22:30:40' -m longslit -s LS60x5 -e 10 --agw B_Bessell
n1234_wide
```

will setup to guide through the `B_Bessel` filter (431nm center wavelength) if the following observing script is setup for the blue-only channel and you are working against strong atmospheric dispersion in the blue (e.g., cannot orient along the parallactic angle for some reason). Note that this is not a common option, hence the option has **two dashes** (`--agw`).

The defaults built into `mkMODSACq` were developed during instrument commissioning, and most observers will be able to use the `.acq` scripts generated as-is with little or no further modification. At the very least they will provide you with a good starting point for most long-slit target acquisitions.

While you can prepare multi-object target acquisitions with this program, we ask that observers instead use the `mms2obs` program (see §4.6). This program is much more convenient to use since most of the information needed for the `mkMODSACq` command line is already embedded within an MMS mask design file. The only caveat is that MMS guide star selection can be problematic if care is not taken (it does not have the ability to verify either the guide star coordinates against an astrometric star catalog), and you will likely need to revise the guide star choice after running `mms2obs` by examining the `.acq` script with `modsView`.

4.3.2 Guide Star Verification and Selection

The final target acquisition configuration of MODS can be visualized using the `modsView` program (distributed separately from `modsTools` as noted above). For example

```
modsView ngc1234_wide.acq
```

will display a view of the target acquisition field in `ds9` using a Digitized Sky Survey image of the field, and overlay the MODS science and guide fields along with catalog stars and their magnitudes. It is an excellent way to check your acquisition setup and guide star selection. `modsView` will scan the NOMAD1 astrometric catalog and print coordinates and photometry (if known) for your choice of guide star, and make sure it stays within the guide patrol field after all offsets (if any) are executed.

If you give the `mkMODSAcq` command without the `-g` flag to specify the guide star coordinates, the `.acq` file will have placeholders for `GUINAME` and `GUICOOORDS` inserted as comments at the correct place in the file. The next step in creating the acq script is to open and display this incomplete acq script with `modsView` using the `--find` option to select a guide star. In this mode `modsView` will print out a list of valid guide stars and ask you to pick one (by ID number). It will then print the `GUINAME` and `GUICOOORDS` commands for your guide star choice on the terminal screen, which you can then cut-and-paste into the acq file at the appropriate place. After you've added the guide star, view it with `modsView` as above to verify the selection.

If you forget to fill in the guide star information later, the acq script will fail at the telescope, so getting this step right is important. In general, our experience running queue/service observing for the OSU/RC partners at LBT has shown that about 90% of our problems with MODS scripts are due to poor choice of guide star.

4.3.3 Making a Finding Chart

Once you have a complete `.acq` script, you can generate a finding chart for your target using `modsView` with the `--finder` option. By default `modsView` uses an image from the digitized sky survey, but if you have a FITS format image with a valid (and correct!) world coordinate system applied, you can use that image to create the finder.

If your target is faint, or in a crowded field, it is a good idea to supplement the `modsView` finding chart with a detailed finder, e.g., using SDSS or other imaging that shows the target in relation to nearby or potentially confusing neighbors.

In general, providing a good finding chart that clearly indicates scale, orientation, the target, and the guide star is essential to helping acquire your target at the telescope.

4.4 Make an observing (.obs) script – mkMODSObs

Unlike acquisition scripts, which follow a prescribed sequence in most cases, observing scripts cover a vast range of possibilities. For most routine long-slit and MOS spectroscopic observations, however, observing scripts should be simple.

The `mkMODSObs` program will generate observing scripts that can be executed as-is, or that may be used as templates for crafting more complex observing scripts – the files created by `mkMODSObs` will have all of the necessary boilerplate in the proper format, and your custom observing procedure should only require you to edit the `Exec:` block.

The command syntax for `mkMODSObs` is:

```
mkMODSObs [options] rootName
```

the options are:

```
-o objName      Object name (within 's if objName has spaces in it)
-m mode config  instrument mode {dual|blue|red} and channel config
                 {imaging,grating,prism} to use
-s maskID       Slit mask to use (no defaults)
-l width        Long-Slit width in arcsec (alternative to -s).
                 current choices are 0.3, 0.6, 0.8, 1.0, and 1.2
-e [sec]        single-image exposure time in seconds
-n [#imgs]      Number of images to acquire
```

```
-bfilter [ID]   Blue-channel filter to use
-rfilter [ID]   Red-channel filter to use
-filter [ID]    If mode=red|blue, shorthand for rfilter/bfilter.
```

Note that the filter options would only be used if you were making a template imaging script or choosing a non-standard spectral filter (the default filters optimized for each channel for the spectroscopic modes are part of the mode and configuration selections made via the `-m` option so you don't have to specify the standard spectral-mode filters explicitly).

For example, a dual-channel grating spectrum of a target of 3600s total integration divided into three 1200s exposures through a 0.8-arcsec slit would be created with

```
mkMODSObs mrk573 -o 'Mrk 573' -m dual grating -l 0.8 -e 1200 -n 3
```

This would create the file `mrk573.obs` in the current working directory. Paired with a suitable `.acq` file created with `mkMODSAcq`, you have everything you need to execute the observation.

A number of example observing scripts are given in §6.

4.5 Make an imaging (.img) script – `mkMODSImg`

An imaging (.img) script is hybrid .acq and .obs script: it points the telescope and acquires a guide star, configures the instrument, and after a pause for the active topics to converge, starts taking images of the field. The `mkMODSImg` program is provided to create template .img scripts. These are then ready to execute with the `execMODS` program to perform the observations. Imaging scripts obviate the need to create separate .acq and .obs scripts for imaging targets, as with direct imaging there is no need for the separate mask alignment step requiring all the more advanced choreography of `acqMODS`.

The `mkMODSImg` program creates a template .img script in the current working directory:

```
mkMODSAcq [options] rootName
```

the options are:

```
-o objName      Object name (within 's if objName has spaces in it)
-c 'RA Dec'     Object RA/Dec coordinates, hh:mm:ss +dd:mm:ss, in 's
-p PA           Position Angle in degrees North thru East (default 0)
-g 'RA Dec'     Guide Star RA/Dec coords, hh:mm:ss +dd:mm:ss, in 's
-m instMode     Instrument mode, dual, red, or blue (default: dual)
-e [sec]        Single-image exposure time in seconds (default: 60s)
-n nimgs        Number of images to acquire (default: 1)
-r ccdROI       CCD region of interest (default: 3Kx3K)
-f filterID     Camera filter to use for -m blue or -m red
--bfilter ID    Blue camera filter for -m dual
--rfilter ID    Red camera filter for -m dual
```

The default parameters are:

```
Dual mode (-m dual), 1x60sec in g_sdss and r_sdss filters.
```

Example:

```
mkMODSImg n1234f3 -o 'NGC 1234 Field 3' -c '12:13:14.5 +22:33:44' -g
'12:13:16 +22:30:40' -m dual --rfilter i_sdss --bfilter u_sdss -e 120
-n 4
```

creates an imaging script named `n1234f3.img` that takes a sequence of 4 120second exposures in the SDSS `u` and `i` filters in dual imaging mode.

The file created is a template. It puts in the execution commands for the first set of observations specified on the command line, and then it puts in a comment below which you can build more complex imaging sequences. The example script in §6.6 shows one such imaging script built on the basis of the `mkMODSImg` command.

MODS imaging scripts can also be previewed using `modsView`, allowing you to verify your choice of guide stars, placement of the science field, etc. See the [modsView website](#) for details and download instructions.

4.6 Make multi-object observing scripts from MMS mask files – `mms2obs`

Because most of the information needed to construct acquisition, observing, and calibration scripts already resides in the MODS mask specification (`.mms`) file for the target field, the `mms2obs` program is provided to create the `.acq`, `.obs`, and `.cal` script templates for an MOS observation with only a little additional input:

```
mms2obs [options] rootName
```

the options are:

```
-o objName      Long form of the object name in single quotes.
-c [Red|Blue]   Camera for acquisition (default: Red)
-f [filterID]   Camera filter to use
-t [sec]        Acquisition exposure time (default: 60seconds)
-m mode disp    Instrument mode (dual|blue|red) and dispserer
                 disp=(grating|prism) for the science observations
-e expTime      Base science exposure time in seconds (no default)
-n numExp       Number of science exposures to acquire (default 1)
--agw filtID    Select an AGw guide camera filter other than Clear
                 Options are F525LP, B_Bessel, or ND1.0
--nocal        Do not generate the calibration (.cal) script
```

To use `mms2obs`, you need to have a copy of the mask `.mms` file for your target in the working project directory created using `modsProject`. In general, the `.mms` and observing scripts should be bundled together, as the `.mms` files are also needed to run the `modsAlign` program at the telescope.

For example, an MOS mask file `a1689.mms` is copied into the working project directory, and you wish to take 3600s of total integration in dual-grating mode, divided into four 900 second integrations. The `mms2obs` command to build the necessary acquisition (`.acq`) and observing (`.obs`) scripts would be:

```
mms2obs a1689 -o 'Abell 1689 Field 1' -c red -f r_sdss -t 60 -m dual
grating -e 1200 -n 3
```

This reads `a1689.mms` and creates three scripts: `a1689.acq`, `a1689.obs`, and `a1689.cal`, all ready to execute as-is. Note that all of the target, guide star, rotation, and mask data needed for the acquisition and observing scripts are taken directly from the `.mms` file. Scripts created using `mms2obs` have been successfully used as-is at the telescope.

The calibration (`.cal`) script will take daytime flat-field and comparison lamp spectra for that mask. This can be edited to suit your needs (e.g., change number or type of calibrations

taken). If you wish to suppress creation of the .cal script, add the `--nocal` option to the command line.

The acquisition field can be previewed using `modsView`, including overlay of the multi-object mask slits. For example

```
modsView a1689.acq --mms a1689.mms
```

will display a view of the target acquisition field for the example MOS observation above, overlaying the science target and alignment star slits. This is a good way to verify your choice of guide stars, the centering of the alignment stars, etc. See the [modsView website](#) for details and download instructions.

Note: Creation of the .cal script was a new feature introduced with `modsTools` version 1.2.

4.7 Worked Examples

In this section we present worked examples of using the `modsTools` and `modsView` programs to prepare scripts to execute a long-slit observation and a multi-object observation.

4.7.1 Long-Slit Observing Script Example

You want to prepare scripts for grating long-slit spectroscopy of a nuclear starburst galaxy found in the SDSS. Observing parameters are:

- Dual-grating mode with the dichroic
- 1-arcsec long slit oriented along the parallactic angle (50° or -130°)
- 1 hour total exposure, executed as three 1200s exposures

Step 1: Create a new project folder

In this example, our new project is `OSU_Starburst` for the OSU/RC partner block:

```
% modsProject OSU_Starburst -p OSURC
```

This will print the following to the screen:

```
** Welcome to MODS Observing Project Setup Script **

modsProject will create and configure a project directory for
the OSU_Starburst observing project.

This is the directory where you will create all of the MODS
target acquisition and observing scripts for this project.

Is this what you want to do? <Y|N>:
```

Answer “y” at the prompt. You will then be asked for the PI names

```
Using LBT Partner: OSURC
PI Name(s)?
```

Enter them at the prompt, separated by commas if more than one name is needed

```
PI Name(s)? Pogge
```

It then creates the folder named `OSU_Starburst`, and a `.modsProject` file

The /home/darkstar/pogge/MODS/OSU_Starburst directory has been configured.

Good Luck!

modsProject done.

Now go into the new OSU_Starburst directory and look at the .modsProject file it created:

```
% cd OSU_Starburst
% cat .modsProject

#
# MODS Project File
#
# Created: 2013 Jan 17 - 18:16:45 UTC by pogge@darkstar
# Program: modsProject v0.1.3
#

# Parameters for the Archive: Block

PARTNER OSURC
PROPID OSU_Starburst
PI_NAME Pogge
```

All subsequent steps will be carried out in the OSU_Starburst directory folder.

Step 2: Create the acquisition script and select a guide star

Target parameters are:

Target Name: SDSSJ004054
Target Coordinates: RA=00:40:54.33 Dec=+15:34:09.66 (J2000)
Position Angle: 50°

Instrument Parameters:

mode: Long-Slit
Slit Mask: 1" wide longslit (LS5x60x1.0)

And just use the default acquisition parameters

```
% mkMODSAcq j004054 -o SDSSJ004064 -c '00:40:54.33 +15:34:09.66' -p
50 -m longslit -l 1.0
```

```
You have not specified a guide star, so next step
is to select one using modsView --find
```

```
**Done: Created MODS acquisition script j004054.acq
```

If you look at the contents of j004054.acq, you will see

```
#
# MODS Target Acquisition Script
#
# Created: 2013 Jan 17 - 18:25:33 UTC by pogge@darkstar
# Program: mkMODSAcq v1.0.1
#
```

```
ACQMode longslit

Archive:
  PARTNER OSURC
  PROPID OSU_Starburst
  PI_NAME Pogge

Target:
  OBJNAME SDSSJ004064
  OBJCOORDS 00:40:54.33 +15:34:09.66
#  GUINAME
#  GUICORDS
  POSANGLE 50
  AGWFILT Clear
  PRESET ACTIVE

Instrument:
  SLITMASK LS5x60x1.0
  ACQCamera Red
  ACQFilter r_sdss
  ACQexptime 60
  ACQROI 1Kx1K

Acquire:
  SlitGO
  AcqGO
  print Align the slit using modsAlign -l...
  PAUSE
  SlitGO
```

The GUINAME and GUICORDS commands in the Target: block are commented out because you did not provide guide star coordinates on the command line. This is because you are going to select a guide star using this template .acq script and the modsView program.

Step 3: Use modsView to select a guide star

```
% modsView j004054.acq --find
```

A ds9 window will be opened, the sky survey image of the field displayed, and a summary of the acquisition script printed on the screen:

```
MODS .acq Script: j004054.acq

Summary:
  Object: SDSSJ004064
  Coords: 00:40:54.33 +15:34:09.66
  Rotator PA: 50.0 deg
  Guide Star: NONE - search requested
  AGw Filter: Clear
  Slit Mask: LS5x60x1.0
  Acquisition: Red Camera, r_sdss Filter, Exp=60.0 sec

Displaying MODS sky view:
  Downloading DSS image from the server...
  Plotting NOMAD1 catalog stars with their R magnitudes...
  Magnitude Range: 16.5 < R < 12.0
```

It then searches the guide patrol field for valid guide stars and presents you with a list of candidates to choose from:

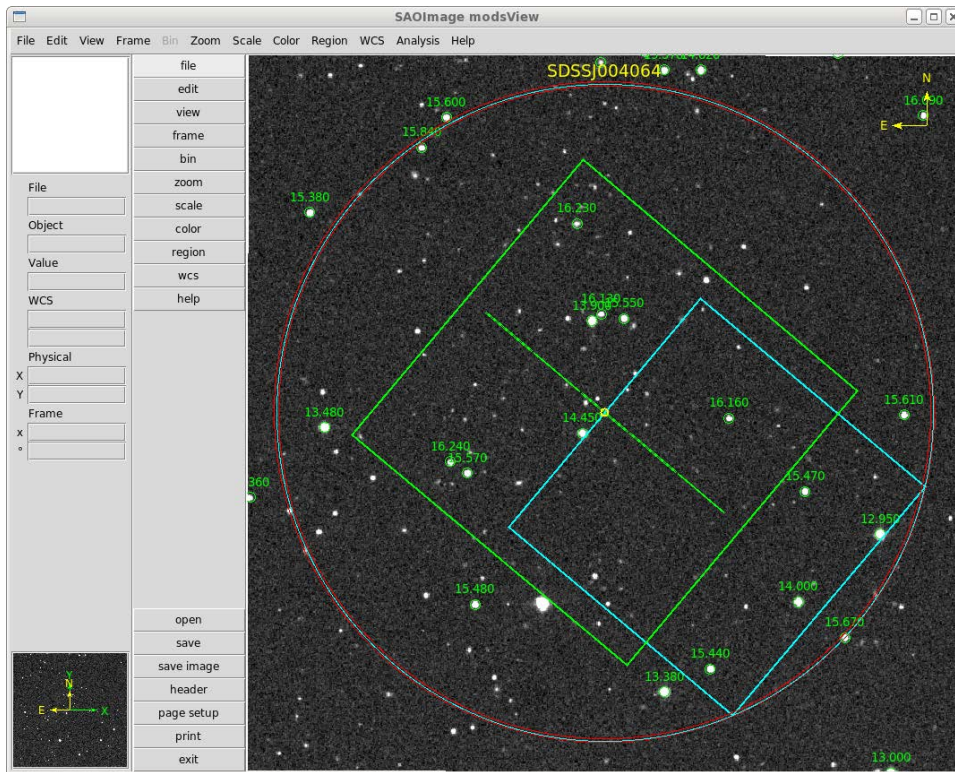
Searching the NOMAD1 catalog excerpt for candidate guide stars...

Found 5 candidates:

Star	ID	RA	Dec	R	B
4	1055-0006935	00:40:35.17	15:32:07.45	12.95	13.79
7	1055-0006952	00:40:40.89	15:30:59.89	14.00	14.28
36	1054-0007170	00:40:47.00	15:29:52.35	15.44	15.56
6	1055-0006951	00:40:40.42	15:32:50.62	15.47	16.79
8	1055-0006964	00:40:45.71	15:34:04.36	16.16	16.13

Select a guide star (0 to abort):

Looking at the modsView display:



You can see the 5 stars inside the blue guide patrol field box. The number above each catalog star is the R-band magnitude. The R=14.000 magnitude star, which is star “7” in the table is a good guide star: not too bright or faint, and clear of the slit mask. Pick star #7:

Select a guide star (0 to abort): 7

Guide Star Selection:

```
GUINAME NOMAD1 1055-0006952
GUICOOORDS 00:40:40.89 +15:30:59.89 # R=14.00 B=14.28
```

After picking the star, it prints the GUINAME and GUICOOORDS lines and circles the selected guide star in blue on the ds9 window.

Next, open the `j004054.acq` file with your favorite editor, then cut-and-paste the coordinates into the appropriate spot in the `Target:` block, like so

```
Target:
  OBJNAME SDSSJ004064
  OBJCOORDS 00:40:54.33 +15:34:09.66
  GUINAME NOMAD1 1055-0006952
  GUICORDS 00:40:40.89 +15:30:59.89 # R=14.00 B=14.28
  POSANGLE 50
  AGWFILT Clear
  PRESET ACTIVE
```

Where we show only the `Target:` block, and highlight the new lines added. Notice that the `GUICORDS` line includes the R and B magnitudes of the guide star as a comment (text after the `#` character). This is not required, but it is very useful for the on-site observers to know what to expect.

Step 4: Make the observing script

Now use `mkMODSObs` to create the spectroscopic observation (`.obs`) script:

```
% mkMODSObs j004054 -o SDSSJ004054 -m dual grating -l 1.0 -e 1200 -n 3

**Done: Created MODS observing script template j004054.obs
```

If you print the `j004054.obs` script created, you will see

```
#
# MODS Observing Script
#
# Created: 2013 Jan 17 at 18:33:02 UTC by pogge@darkstar
# Program: mkMODSObs v0.6.1
#

OBSMODE

Archive:
  PARTNER OSURC
  PROPID OSU_Starburst
  PI_NAME Pogge

Instrument:
  instconfig dual grating
  slitmask LS5x60x1.0

Exec:
  object SDSSJ004054
  exptime 1200
  nimgs 3
  dgo

end
```

As advertised, this will execute three (3) 1200s exposures in dual-grating mode with the 1" wide long-slit mask (LS5x60x1.0).

Step 5: Make a finding chart

```
% modsView j004054.acq --finder
```

This will display the finder with your guide star choice shown in ds9, print a summary, and then create the PNG file j004054.png with the finding chart

```
MODS .acq Script: j004054.acq
```

Summary:

```
Object: SDSSJ004064
Coords: 00:40:54.33 +15:34:09.66
Rotator PA: 50.0 deg
Guide Star: 00:40:40.89 +15:30:59.89
AGw Filter: Clear
Slit Mask: LS5x60x1.0
Acquisition: Red Camera, r_sdss Filter, Exp=60.0 sec
```

Guide Star Check:

```
The guide star is inside the MODS patrol field after the telescope preset.
```

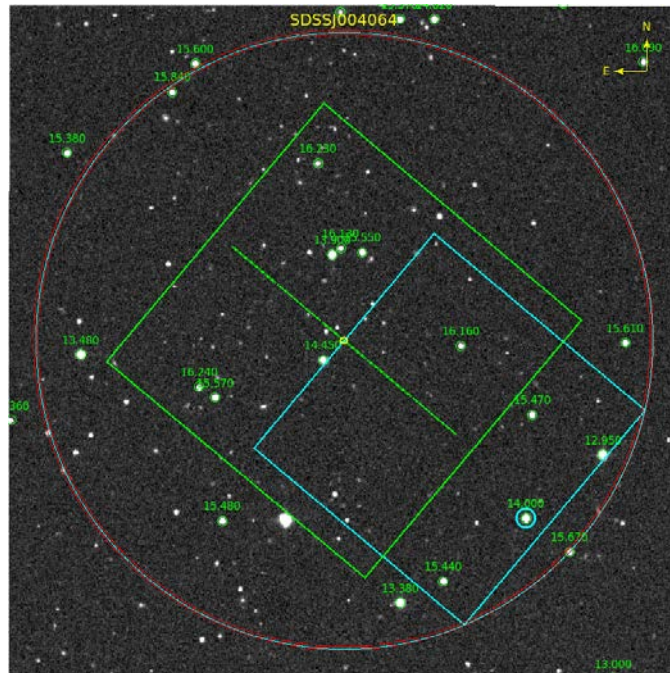
Displaying MODS sky view:

```
Downloading DSS image from the server...
Plotting NOMAD1 catalog stars with their R magnitudes...
Magnitude Range: 16.5 < R < 12.0
```

Guide Star Catalog Info:

```
Star ID: NOMAD1 1055-0006952
Coords: 00:40:40.89 +15:30:59.89
Phot: R=14.00 B=14.28
```

The finder chart created looks like this:



It indicates orientation (yellow N/E compass at the upper right), the relative scale, here shown by the 6-arcminute MODS science field of view (green box), labels the guide star (blue circle), and shows the slit and target positions.

At the end of this process, you have the three essential observing files for this target:

```
j004054.acq  Target acquisition script
j004054.obs  Science observing script
j004054.png  Target finding chart with MODS focal plane overlay
```

4.7.2 Multi-Slit Observing Script Example

You want to prepare scripts for obtaining multi-slit observations of HII regions in the spiral galaxy NGC3938. Observing parameters are:

- Dual-grating mode with the dichroic
- Multislit mask with 3 alignment stars and about 20 1-arcsec wide slitlets. The mask is designed to be oriented along the parallactic angle (90° or -90°) when this target is between HA=-4 and -1^h .
- 2 hour total exposure, executed as six (6) 1200s exposures

Finally, this assumes that you have already designed the multislit mask using the MMS program, in a file named NGC3938_f2.mms (renamed from the original unintelligible default names MMS uses).

Step 1: Create a new project folder

In this example, our new project is UM_CHAOS for the OSU/RC partner block:

```
% modsProject UM_CHAOS -p OSURC
```

This will print:

```
** Welcome to MODS Observing Project Setup Script **

modsProject will create and configure a project directory for
the UM_CHAOS observing project.

This is the directory where you will create all of the MODS
target acquisition and observing scripts for this project.

Is this what you want to do? <Y|N>:
```

Answer “y”, then enter the PI names at the next prompt (shown in **boldface**).

```
Creating UM_CHAOS subdirectory...

Using LBT Partner: OSURC
PI Name(s)? Berg, Skillman, Pogge, Croxall

The /home/darkstar/pogge/MODS/UM_CHAOS directory has been configured.

Good Luck!

modsProject done.
```

Finally, copy the NGC3938_f2.mms file into UM_CHAOS.

Step 2: Create the template observing scripts from the MMS file

The information in the MMS file is enough to create template scripts with only a few extra inputs:

```
% mms2obs NGC3938_f2 -o 'NGC3938 Field 2' -m dual grating -e 1200 -n 6

**Done: Created three scripts:
    acquisition: NGC3938_f2.acq
    observing: NGC3938_f2.obs
    calibration: NGC3938_f2.cal
```

mms2obs takes the rootname of the MMS file (NGC3938_f2) as the basis for creating the three scripts. The .cal script has the commands for obtaining flat-field and comparison lamp spectra for this mask. Also note that in all of these scripts the slit mask name is listed as

```
SLITMASK ID500541
```

The “ID” in the name is required for custom masks, followed immediately (no spaces) by the 6-digit numerical code is the code assigned by MMS at the time the mask design was created (here 500541). This name will be used to identify your mask in the instrument and in all subsequent reductions.

Step 3: Verify the mask and make a finding chart

```
% modsView NGC3938_f2.acq --mms NGC3938_f2.mms --finder
```

This will display the finder with your guide star choice on the ds9 window, print a summary,

```
MODS .acq Script: NGC3938_f2.acq
```

Summary:

```
    Object: NGC3938 Field 2
    Coords: 11:52:49.186 +44:07:14.600
    Rotator PA: 90.0 deg
    Guide Star: 11:52:32.138 +44:05:06.810
    AGw Filter: Clear
    Slit Mask: ID500541
    Acquisition: Red Camera, r_sdss Filter, Exp=60.0 sec
```

Guide Star Check:

```
The guide star is inside the MODS patrol field after the telescope
preset
```

Displaying MODS sky view:

```
    Downloading DSS image from the server...
    Plotting NOMAD1 catalog stars with their R magnitudes...
    Magnitude Range: 16.5 < R < 12.0
```

Guide Star Catalog Info:

```
    Star ID: NOMAD1 1340-0231916
    Coords: 11:52:32.22 +44:05:08.35
    Phot: R=15.46 B=17.40
```

and then create NGC3838_f2.png with the finding chart.

5 MODS Script Details

5.1 Script Basics

MODS scripts are flat ASCII text files containing lists of commands to be executed, in order, from the top to the bottom of the file. Blocks of commands can be grouped together into labeled functional blocks. Blank lines are ignored, all text following a # character is treated as a comment, and indentation can be used for readability.

Consider this sample observing script

```
#
# A MODS Observing Script example
#
# R. Pogge, OSU Astronomy Dept.
# pogge@astronomy.ohio-state.edu
# 2011 Mar 17
#

OBSMODE

Archive:
  PARTNER OSURC
  PROPID  OSU_SDSSQSOs
  PI_NAME Pogge

Instrument:
  instconfig dual grating
  slitmask LS5x60x0.8

Exec:
  object J18485-0047
  exptime 600
  nimgs 3
  go

END
```

The main components of this script are broken down as follows:

5.1.1 Script Execution Mode

The first non-comment line of a script must be a **Script Execution Mode Command**. In our example above

```
OBSMODE
```

indicates that this is an observing script.

The script execution mode commands make sure that MODS is in the correct physical configuration for that mode and sets important execution parameters for the script engine.

There are four script execution modes, as follows:

OBSMODE – Observing Mode

For science (“sky”) observing scripts we must instruct MODS to make sure the

instrument dark hatch is open to the sky, the calibration tower is stowed, and all calibration lamps are turned off before executing the rest of the script.

CALMODE – Calibration Mode

For an internal calibration script, we need to instruct MODS to close the instrument dark hatch, retract the AGw stage, and deploy the calibration tower before executing the rest of the script.

ACQMODE – Target Acquisition Mode

Target acquisition scripts are setup with ACQMODE, which takes a required argument indicating what kind of target acquisition is to be performed:

Imaging – an imaging target acquisition

slit – a long-slit spectroscopy target acquisition

MOS – a multi-object spectroscopy target acquisition

Like OBSMODE, it also makes sure the instrument is open to the sky and the calibration system stowed and turned off before executing the rest of the script.

SETUPMODE – Instrument Setup Mode

Instrument setup scripts are used for non-observing operations. Unlike OBSMODE, CALMODE, and ACQMODE, this will not check or change the current state of the instrument dark hatch, calibration system, or AGw stage before proceeding. Observers will rarely if ever create SETUPMODE scripts, although you may execute predefined setup scripts at the instruction of LBTO support scientists. SETUPMODE scripts will not be discussed further in this document.

5.1.2 Functional Blocks

Commands within a MODS script are grouped into labeled **functional blocks**. From our example script above, here are the first two functional blocks

```
Archive:
PARTNER OSURC
PROPID OSU_SDSSQSOS
PI_NAME Pogge

Instrument:
instconfig dual grating
slitmask LS5x60x0.8
```

A functional block begins with a single-word **block label** that is terminated by a colon (:). Block labels must appear on a line by themselves with no other commands or comments. While block labels are **case insensitive**, it is conventional to capitalize the first letter or use mixed case if the label is a compound of multiple words.

A functional block ends at the next block label or at the end of the script, whichever comes first. In the example above, the `Archive:` block ends with the last command before the `Instrument:` block label, while the `Exec:` block ends with the script.

Observers can define their own functional block names, for example to organize multipart observing scripts (see §6.5 for an example in a multi-lamp calibration script). There are, however five reserved block labels used by the scripting engines for specific purposes, as follows:

Archive:	Information required by the LBTO image data archive
Instrument:	Main instrument configuration block
Target:	Target, guide star, and telescope preset block of an acquisition script.
Exec:	Main execution block of an observing or calibration script
Acquire:	Main execution block of an acquisition script.

Each of these will be discussed in their proper contexts in the sections below.

For readability, a well-formatted script will indent the commands within a block by 2 or 3 spaces. Commands will be executed serially in the order in which they appear in the script.

Functional blocks are a key component of how MODS scripts implement reentrancy.

5.1.3 Instrument and Telescope Commands

Commands for the MODS instrument or the telescope appear as text on lines by themselves, one command per line.

Commands may be a single word, or a command word followed by one or more arguments. For example:

```
object J18485-0047
exptime 600
nimgs 3
go
```

While the command words themselves are case insensitive, their arguments are passed to the instrument as is, preserving case.

A full list of commands and their argument are described in §7.

5.1.4 Script Flow Control and Printing Commands

MODS scripts are simple lists of commands to be run in sequence. A very limited number of internal script commands are provided to control the forward flow of a script and print messages to the console to give feedback as to script progress.

PAUSE

Pause script execution and wait for the user to hit the Enter key to resume, or X to abort execution and stop the script.

SLEEP *sec*

Suspend execution of the script and go to sleep for *sec* seconds. Gives the user a countdown to monitor the sleep interval.

PRINT *message text to print*

Prints a message on the terminal screen.

Our intention is to keep MODS scripts simple, so we do not provide higher-level flow control like loops, branching, or logical if/else tests.

5.1.5 End Command

All scripts must end with the word “end” as the last line. Note that like all command words, end is case insensitive.

Any lines of the script following an END command will not be executed, but it is bad form to have commands after an END. Instead, comment out unused commands or functional blocks.

5.1.6 Script Comments

All text following a # character is treated as a comment and not executed. For example, the top section of the example script

```
#
# A MODS Observing Script example
#
# R. Pogge, OSU Astronomy Dept.
# pogge@astronomy.ohio-state.edu
# 2011 Mar 17
#
```

is a block of comments used to annotate the script and record its use and origins.

You may also use in-line and indented comments, for example

```
Exec:
  red filter i_sdss  # Select SDSS I filter
  nimgs 2
  #nimgs 3
  go
```

The in-line comment in the 2nd line explains the command (“this is what I’m doing here”), and the comment in the 4th line disables (“comments out”) the “nimgs 3” command preventing it from being executed.

Scripts created by one of the script preparation tools described in §4 write a comment block at the top of scripts to record the date of creation, the program version number, the user who created it, and other information to help establish the provenance of the script.

Judicious uses of comments can be very helpful to the on-site observers, especially if you are doing something complex or unusual. Overuse of comments, however, can make scripts hard to read or repair if there are problems, so striking a balance is essential.

5.2 Target Acquisition (.acq) Scripts

Target Acquisition (.acq) scripts point the LBT to the coordinates of a new target, setup the guide star, and take acquisition images to align the target(s) with the slit mask. Acquisition scripts are executed using the `acqMODS` program (§3.1), and the standalone `modsAlign` program (§3.2) is used to align targets with slits.

An example of a long-slit acquisition script is as follows:

```
#
# Example MODS Long-Slit Target Acquisition Script
#
ACQMode SLIT
```

```
Archive:
PARTNER OSURC
PROPID OSU_HighZ
PI_NAME DeRosa

Target:
OBJNAME J1420-1620
OBJCOORDS 14:20:36.32 -16:02:30.18
GUINAME GStar
GUICORDS 14:20:37.567 -16:06:30.08
POSANGLE 0
AGWFILT Clear
PRESET ACTIVE

Instrument:
SLITMASK LS5x60x0.8
ACQCamera Red
ACQFilter r_sdss
ACQExpTime 60
ACQROI 1Kx1K

Acquire:
SlitGO
AcqGO
PAUSE
SlitGO

END
```

A typical acquisition script will take the following actions, in order:

1. Put the instrument and data-taking system into acquisition mode for long-slit (ACQMode SLIT), making sure MODS is open to the sky and the calibration system is stowed.
2. Load the Partner ID, Proposal ID, and PI Name into system for inclusion in subsequent image FITS headers so that the images taken will be searchable in the LBTO data archive (Archive: block)
3. Upload the target and guide star coordinates and the desired the position angle to the telescope, put in the desired (or default) AGw guide camera filter, and then execute an active preset (Target: block) to point to the target, lock on the guide star, and start the active optics correction loop (preset active).
4. Configure MODS to use the named slit mask and setup for acquisition images using the named camera, filter, exposure time, and CCD region-of-interest subframe readout.
5. Acquire a pair of acquisition images through the slit (SlitGO) and with the slit retracted (AcqGO), then pause and wait for the observer to offset the target onto the slit using the modsAlign program, and then on resuming execution after the PAUSE, take a final confirmatory through-slit image (second SlitGO). The sequencing of the thru-slit, field, and confirmatory images are long enough to allow the active optics collimation loop to converge before the following science data acquisition begins.

Acquisition scripts use special commands that take care of many of the details of pointing and instrument configuration, and coordinating all of the activities of the telescope, guiding, and instrument control systems.

5.2.1 Acquisition Mode (ACQMode)

The first non-comment command in an acquisition script must be **ACQMode**, specifying the acquisition mode to use:

```
ACQMode Imaging – acquire a direct imaging target
ACQMode slit – acquire a target for long-slit spectroscopy
ACQMode MOS – acquire a target for multi-object spectroscopy
```

Imaging target acquisitions are the simplest: they point the telescope at the field and, if requested, snap a confirmatory acquisition image.

Long-slit and MOS target acquisition modes enable commands to take rapid sequences of thru-slit and field (no mask) images including the mask insert/retract motion.

The external program `modsAlign` (§3.2) is provided to compute and execute telescope offsets to align targets with the slit. Blind offsets are also possible as described in §5.2.6.

5.2.2 Archive: Block

The `Archive: block` consists of three commands that define the FITS header information needed to make your data searchable and accessible in the LBTO data archive.

```
Archive:
  PARTNER OSURC
  PROPID OSU_HighZ
  PI_NAME DeRosa
```

All three are required for every script. See §7.2 for descriptions of these commands.

5.2.3 Target: Block

The `Target: block` specifies the target and guide star coordinates, the rotator position angle (and mode) to use, the AGW guide camera filter (default is Clear, but other choices are available for special applications), and the type of telescope preset to execute. From our example above:

```
Target:
  OBJNAME J1420-1620
  OBJCOORDS 14:20:36.32 -16:02:30.18
  GUINAME GStar
  GUICCOORDS 14:20:37.567 -16:06:30.08
  POSANGLE 0
  AGWFILT Clear
  PRESET ACTIVE
```

The required `Target: block` commands are as follows:

```
OBJNAME – name of the science target, max 40 characters.
OBJCOORDS – science target coordinates, RA in sexagesimal hours, Dec in sexagesimal degrees, equinox J2000. The colons (:) and sign on the Dec are required.
```

GUINAME – name of the guide star. GStar is a good placeholder.

GUICOOORDS – same format and equinox as OBJCOORDS.

POSANGLE – instrument celestial position angle in **decimal degrees** measured from North through East in the usual way. This is the position angle for the slit projected onto the sky.

AGWFILT – AGw guide camera filter to use. The most common default is the Clear filter, other options are the F525LP red long-pass filter, the B_Bessel blue filter, and an ND1.0 attenuation filter. See §7.3.7

PRESET – telescope preset mode, choices are:

ACTIVE – guide and apply active optics corrections

GUIDE – guide on the target but make no active optics corrections

TRACK – track open loop on the target (no guiding or active optics)

Nearly all observations should use **ACTIVE** presets.

Restrictions:

PRESET must always be the **last command** in the Target : block.

No other commands should appear in the Target : block.

5.2.4 Instrument: Block

The Instrument : block configures the instrument for target acquisition imaging:

```
Instrument:
  SLITMASK LS5x60x0.8
  ACQCamera Red
  ACQFilter r_sdss
  ACQExpTime 60
  ACQROI 1Kx1K
```

The commands for this block are as follows:

SLITMASK maskID

Name of the slit mask to use. **maskID** must be one of the mask names listed in the current mask table on the LBTO wiki.

Mask cassette device position numbers should never be used.

If ACQMode is Imaging, use Imaging for the maskID.

ACQCamera [red|blue]

Camera for taking thru-slit and field target acquisition images. Only one camera is used for acquisition images.

ACQCamera must come before all subsequent ACQxyz commands.

ACQFilter filterID

Camera filter to use. Recommended filters are:

Red Camera: r_sdss

Blue Camera: g_sdss

but other choices are valid (e.g., z_sdss for acquiring z>6 quasars).

ACQExpTime seconds

Acquisition image exposure time in seconds, 1 second minimum.

ACQROI ccdConfig

Optional: change the CCD sub-frame readout Region-of-Interest configuration for the acquisition images. If omitted, it uses the default imaging ROI (3K×3K). Valid ROIs for acquisition images are:

Valid ROIs for acquisition images are:

1Kx1K – 1024×1024 pixels centered in the imaging field

2Kx2K – 2048×2048 pixels centered in the imaging field

3Kx3K – 3072×3072 pixels centered in the imaging field [**default**]

The typical unbinned readout times are X, Y, and Z seconds, respectively.

Restrictions:

`ACQCamera` must come **before** all other `ACQxyz` commands in the block.

For imaging target acquisitions (ACQMode Imaging), specify `SLITMASK Imaging`.

5.2.5 Acquire: Block

The Acquire: block executes the target acquisition images after the preset has been completed and the instrument configured for imaging. For example:

```
Acquire:
  SlitGO
  AcqGO
  PAUSE
  SlitGO
```

Two commands are provided for thru-slit and field (no mask) acquisition images:

slitGO – insert the slit mask and take a thru-slit image.

AcqGO – retract the slit mask and take a field (no mask) image.

Which you use and in what order depends on what you are doing.

Direct Imaging Mode: A single `AcqGO` to confirm the field in the science camera usually suffices. `SlitGO` makes no sense (no slit).

Long-Slit Mode: The usual practice is to take a thru slit and field images in that order. The first thru-slit image (`SlitGO`) will be taken while active optics is still converging, and by the time the following field image is taken (`AcqGO`) active optics will usually have converged. After the `AcqGO`, you `PAUSE` and use the `modsAlign` program with the `-l` flag (“eI” for long-slit) run in another terminal window to compute and execute the telescope offset to put the target in the slit. A final `SlitGO` takes a confirmatory thru-slit image.

MOS Mode: The practice is the same as with Long-Slit spectra, except now the full 2D alignment mode of `modsAlign` is used to align the slit mask in offset and rotation after the `PAUSE`. Confirmatory thru-slit images are usually required for MOS spectra to be sure the mask is properly aligned.

The script example in this section uses the `PAUSE` command to suspend the acquisition script while you are running the `modsAlign` program in another terminal window.

5.2.6 Blind Offsets to Faint Targets

Blind offsets may be performed given an $(\Delta\alpha, \Delta\delta)$ offset in celestial coordinates (units of arcseconds) between a reference star and the faint target. The changes to the acquisition sequence would be as follows:

1. OBJCOORDS in Target: block would be the RA and Dec of the **reference star**
2. The reference star is acquired on the slit using SlitGO and AcqGO as above.
3. In the Acquire: block the second confirmatory SlitGO is followed with a relative OFFSET command to move the faint target into the slit. For example, this Acquire: block is for a faint target offset by -32.3 arcsec West and +12.5 arcsec North of a bright, readily acquired nearby reference star:

```
Acquire:
  SlitGO
  AcqGO
  print Put the reference star on the slit using modsAlign -1
  PAUSE
  SlitGO
  pause Verify the reference star placement and refine as needed
  offset -32.3 12.5 rel
  updatepointing

END
```

See §7.8.1 for a description of the OFFSET command. OFFSET works in RADEC coordinates, and the companion command OFFSETXY works in the DETXY coordinates. The additional PAUSE command between the second SLITGO and the OFFSET command is optional, it gives you a last chance to tweak the centering of the reference star further (if needed) before committing the blind offset. Consider omitting the verification step only if you are feeling lucky.

5.3 Science Observing (.obs) Scripts

Observing (.obs) scripts configure the instrument and acquire science data after a successful target acquisition. Observing scripts are executed using the execMODS program (§3.3).

A typical observation script is shown below:

```
#
# MODS Observing Script
#

OBMode

Archive:
  PARTNER OSURC
  PROPID OSU_HighZ
  PI_NAME DeRosa

Instrument:
  instconfig dual grating
  slitmask LS5x60x1.2
```

```

Exec:
  object J1420-1620
  exptime 1200
  nimgs 6
  go
END

```

Observation scripts take the following actions, in order:

1. Make sure MODS is open to the sky, retract the calibration tower if in, and turn off all of the calibration lamps (**OBSMode**).
2. Load the archive info (PARTNER et al.) for inclusion in subsequent image FITS headers so that the images taken will be searchable in the LBTO data archive. The Archive: block should be the same as in the corresponding acquisition script.
3. Configure MODS for the desired instrument mode (dual- or single-channel operation, imaging, grating spectroscopy, or grism spectroscopy), and inserts a slit mask.
4. Setup and execute the science exposures on the target – here 6 undithered 1200 second integrations.

The following sections describe each of the sections of the observing script.

5.3.1 Observation Mode (**OBSMode**)

The first executable command in an observation script must be **OBSMode**. This confirms that the instrument is open to the sky with the calibration system stowed and all calibration lamps turned off before executing any observing commands.

5.3.2 Instrument: Block

The **Instrument :** block configures the instrument for science observing:

```

Instrument:
  instconfig dual grating
  SLITMASK LS5x60x1.2

```

Commands for this block are as follows:

```
INSTCONFIG config disperser
```

Configure the instrument. **config** defines the instrument optical configuration:

- dual** – Dual channel (Red+Blue) operation
- blue** – Blue-only operation (red channel is blocked and idle)
- red** – Red-only operation (blue channel is blocked and idle)

disperser selects the disperser option:

- imaging** – imaging flat mirror(s)
- grating** – reflection grating(s)
- prism** – double-pass prism(s)

INSTCONFIG also sets up the default CCD readout properties (ROI and binning appropriate to that instrument mode), selects the default spectroscopic filters and the dichroic configuration, clears exposure flags, and locks on the image motion compensation system (IMCS). Preset instrument configurations make for highly efficient instrument setup in which all mechanisms are moved simultaneously,

so that the time to configure the instrument is set by the slowest mechanism (the grating turrets).

SLITMASK maskID

Insert the named slit mask into the science field. **maskID** must be a valid loaded mask name as listed in the mask table at the observatory.

Mask cassette device position numbers should never be used.

In imaging mode, use the maskID=Imaging mask (a field stop that is part of the internal stray light baffles).f

5.3.3 Execution (Exec:) Block

The `Exec:` block contains all of the commands that setup and take the exposures for the script. For example, to take dual-grating spectroscopy with 2 hours of total exposure time divided into six 1200-second single exposures would look like this:

```
Exec:
  object J1420-1620
  exptime 1200
  nimgs 6
  go
```

Because MODS is a 2-channel instrument, adding the RED or BLUE qualifier before a command will direct the command to only that channel. For example, the `Exec:` block for an imaging script that cycled through the ugriz imaging filters in the red and blue channels might look this:

```
Exec:
  object NGC 1234 ugriz
  # Set 1 of 3 - 2*(g+r)
  blue filter g_sdss
  red filter r_sdss
  exptime 15
  nimgs 2
  go
  # Set 2 of 3 - u+2*i
  blue filter u_sdss
  red filter i_sdss
  blue exptime 30
  red exptime 15
  blue nimgs 1
  red nimgs 2
  go
  # Set 3 of 3 - u+z
  red filter z_sdss
  red exptime 30
  red nimgs 1
  go
end
```

This sequence takes two 15-second g, r, and i images, two 30-second u images, and one 30-second z image. The synchronization of exposure and readout times in the middle `u+2i` images in this example is sloppy and inefficient, but it serves to illustrate the principle. The blue and red images run simultaneously on a single GO: for example in the middle section of the block that takes `2×15s` red and `1×30s` blue images, the two red exposures will be done in

sequence while the 30s blue is executing – both channels run more or less autonomously, with the instrument’s control panel waiting until both complete (and monitoring both).

The original 4-command `Exec: block` example in this section exploited the fact that the `OBJECT`, `EXPTIME`, and `NIMGS` commands, when used without a Red or Blue channel qualifier, will set those parameters the same on both channels. These are examples of so-called “implicit dual” commands. For example, the sample `Exec: block` the first dual-channel observation is equivalent to

```
Exec:
  red object J1420-1620
  blue object J1420-1620
  red exptime 1200
  blue exptime 1200
  red nimgs 6
  blue nimgs 6
go
```

However, if a single channel configuration is selected, the implicit dual commands will only set parameters on the active channel (thus if we were to have selected “`instconfig red grating`”, the unqualified `object`, `exptime`, and `nimgs` commands would only set the red channel).

Be careful, however, with GO. If, for example, in the above “fully qualified” version of the `Exec: block` above, we had instead of a single `GO` the red and blue `GO` commands

```
blue go
red go
```

it would first take the blue images **then** take the red images, whereas

```
go
```

starts the red and blue images simultaneously – you could also use `DGO` to make the “Dual GO” operation explicit (see §7.5.13).

Never use a channel-qualified GO command in an observing script unless you really intend to leave the other channel idle.

5.3.4 Exec: Block Commands

While in principle any valid MODS instrument or telescope interface command can be used in an `Exec: block`, the following are the most common and useful commands that will let you execute most observing programs.

OBJECT target name

Name of the target and the image type. The target name is stored in the `OBJECT` header keyword, and the image type in the `IMAGETYP` keyword. In addition to `OBJECT`, valid image types are `BIAS`, `FLAT`, `COMP`, `STD`, `SKY`, and `DARK`. See §7.5 for details.

EXPTIME seconds

Set the single-frame exposure time in seconds. The minimum exposure time is 1 second, the longest practical time is about 1800s (limited by cosmic ray

accumulation on the red channel's deep-depletion CCD detectors).

NOTE: EXPTIME must FOLLOW object, flat, comp, etc.

NIMGS *n*

Set the number of single-frame exposures to acquire per GO

GO

Start exposures on the active cameras(s). The total exposure time will be

$$\text{TotalExp} = (\text{NIMGS} \times \text{EXPTIME}).$$

[RED|BLUE] FILTER *filtID*

Put the named filter *filtID* into the beam in the named camera (red or blue). Available filters are listed on the instrument website.

For spectroscopic modes, suitable default filters are selected by *instconfig*.

Other commands are available, see §7 for a full summary and the example scripts in §6.

5.4 Imaging (.img) Scripts

Imaging (.img) scripts are a hybrid of acquisition (.acq) and observing (.obs) scripts for when MODS is to be used for direct imaging. Direct imaging does not require a separate step of aligning a target with a slit mask, and since the LBT points to within a few arcseconds of targets with good astrometry, we can have a single script point the telescope, acquire the guide star, configure the telescope, and then start the science imaging without the need to break this into separate .acq and .obs scripts. The `modstools` utility `mkMODSImg` is provided to create template imaging scripts.

An imaging script is structured the same as .obs scripts, with the following differences:

1. It adds a `Target:` block like in .acq scripts (§5.2.3) between the `Archive:` and `Instrument:` blocks.
2. It uses the imaging mask by default
3. It introduces a new command, `WFSWait` (§7.7.4), after the initial instrument configuration commands in the `Exec:` block. `WFSWait` pauses script execution until the observer judges that the active optics collimation loop has converged (usually when the rms wavefront error drops below 500-600nm).

The `WFSWait` command is needed because it takes longer for active optics correction of telescope collimation to converge after a preset than it does for MODS to configure itself for imaging mode. This is unlike the case of long-slit and multi-object spectroscopic target acquisitions, where instrument configuration, target alignment, and other overheads associated with spectroscopic observing all take *longer* than the typical active optics convergence time, so by the time the target is in the slit and ready for the .obs script to start, active optics is also converged and ready.

This means that in imaging mode we have to introduce a pause before starting the science integration parts of the script that follow telescope preset and instrument configuration. The `WFSWait` command performs this function. It is introduced between the instrument configuration commands just after the preset and the first GO command. `WFSWait` pauses execution, and puts up a prompt that asks the observer to watch the WFS readout on the GCS

GUI and then to hit Enter when the active optics has converged and start taking science data. Future iterations may make this step automatic, but for now we have implemented this as a purely manual function. Note that only one `WFSWait` command should appear in a script, where it is put in automatically by the `mkMODSImg` program.

An example imaging script is shown in §5.2.3 for taking direct images in the ugriz filters of a standard star field in the globular cluster M71.

5.5 Calibration (.cal) Scripts

Calibration (.cal) scripts take closed-instrument internal calibration images: bias, flat-field, wavelength comparison lamp (“comps”) and dark frames.

```
#
# Dual Grating Mode Hg+Ne Comparison Lamps
#
# Ne + Hg Lamps - wait 30s for Hg to warm up
# ND1.5 filter in both channels. 3 images per side
#

CALMode

Archive:
  PARTNER CALIBRATION
  PROPID CALIBRATION
  PI_NAME ALL

Instrument:
  instconfig dual grating
  slitmask LS5x60x0.6

Exec:
  lamp hg ne on
  print Waiting 30s for the Hg lamp to warm up
  sleep 30
  comp Ne + Hg[Ar] Lamps
  blue exptime 2
  blue filter ND1.5
  red exptime 1
  red filter ND1.5
  nimgs 1
  go
  lamp off

end
```

This script incorporates a number of new script elements as we describe below.

5.5.1 Calibration Mode (CALMode)

The first executable command in a closed-instrument calibration script must be **CALMode**. This makes sure that the instrument dark hatch is closed, the AGW stage retracted and stowed, and the calibration tower inserted into the beam. The guide probe XY position is stored so it can be restored later using the “`OBSMode Restore`” command if desired (see §7.1.2).

The calibration procedures for MODS were worked out during commissioning, and are described in a separate *MODS Calibration Procedures* document. Please read that document for the prescribed procedures for calibrating your data. A number of stock calibration scripts have been created that should cover most of your needs for routine calibration, and provide good templates for custom calibrations. This section is intended to help you understand the contents of those scripts.

As a final note, standard star observations (spectrophotometric flux standards or photometric standard fields) are treated the same as science observing scripts since they collect light from astronomical sources, and so are not covered in this section.

5.5.2 Calibration Archive: Block

The `Archive:` block for a calibration images requires special values for the `PARTNER` and `PROPID` keywords:

```
Archive:
PARTNER CALIBRATION
PROPID CALIBRATION
PI_NAME ALL
```

This makes it easier for all observers to access common calibrations for a queue/service run, and lets other observers get access to all calibrations in case they need backups. If you require special calibrations beyond the standard set, you may set the `PI_NAME` to your name to enable you to search for them in the LBTO data archive.

5.5.3 Internal Calibration Lamps

The `Exec:` block for this example script shows how to use the internal calibration lamps.

```
lamp hg ne on
print Waiting 30s for the Hg lamp to warm up
sleep 30
comp Ne + Hg[Ar] Lamps
...
lamp off
```

In this excerpt, we introduce the `LAMP` command:

LAMP id1 id2 ... ON

Turn on the named lamps id1, id2, etc. Valid lamps are:

- Ne – Neon comparison lamp
- Hg – Mercury (Hg+Ar) comparison lamp
- Kr – Krypton comparison lamp
- Ar – Argon comparison lamp
- Xe – Xenon comparison lamp
- QTH1 – Quartz-Halogen continuum lamp #1
- QTH2 – Quartz-Halogen continuum lamp #2
- VFLAT lev – Variable intensity continuum lamp, lev=1..10

LAMP OFF

Turn off power to all of the calibration lamps. If an optional lamp ID is given, it will turn off only that lamp.

The uses of these calibration lamps are explained in the *MODS Calibration Procedures* document. During instrument commissioning we worked out pairs of lamps, filters and exposure times that will give good, balanced calibration spectra in both channels to aid in calibration efficiency. You should use the facility calibration scripts wherever possible, or at least use them as templates for custom calibration scripts.

In this example we are using the Hg(Ar) lamp which needs to warm up for at least 30 seconds before the lines are bright enough to be useful. To do this, we introduced a SLEEP command after the LAMP command, along with a PRINT statement to let the observer why it is sleeping:

```
lamp hg ne on
print Waiting 30s for the Hg lamp to warm up
sleep 30
```

Only the Hg(Ar) lamp requires a warm-up interval (why is it not automatic? In future versions of the lamp control system it might be...).

At the end of the calibration integrations, we include an explicit LAMP OFF command to turn off all lamps. All calibration scripts that use the internal lamps should do this.

5.5.4 Bias and Dark Calibrations

Bias and Dark calibration frames do not collect light, but they do need the instrument to be closed and dark so CALMode should be used. They can, however, omit the Instrument: block. For example:

```
#
# Acquires 10 each Red and Blue CCD bias images
# Full-Frame 8Kx3K Spectroscopic ROI unbinned

CALMode

Archive:
PARTNER CALIBRATION
PROPID CALIBRATION
PI_NAME ALL

Exec:
bias 8Kx3K Bias Frames
nimgs 10
blue roi 8Kx3K
red roi 8Kx3K
go
nimgs 1

end
```

This sample bias calibration script only has an Archive: block and an Exec: block. The BIAS command automatically sets the exposure time to 0-seconds.

To take dark frames, you would use these commands

```
Exec:
dark 600s Dark Frames
exptime 600
nimgs 3
blue roi 8Kx3K
```

```
red roi 8Kx3K  
go  
nimgs 1
```

This example takes three 600-second dark frames for both cameras. Note that `exptime` must follow `dark` in the script.

Also note that we have put in an explicit statement of the CCD readout region of interest (ROI), here 8Kx3K. The reason is that “dark” calibrations like bias and darks do not make explicit instrument configuration changes (except those encapsulated in CALMode), and so we must set the CCD readout ROI explicitly to ensure the correct data are acquired.

6 Example Scripts

The following are examples of MODS scripts taken from among those successfully run during MODS1 commissioning and early science verification observing. They should give you an idea of what can be done with scripts and serve as good templates of working scripts for preparing your own MODS observations.

Copies of all of these example scripts are available at

www.astronomy.ohio-state.edu/MODS/ObsTools/modsTools/Examples/

Caveat: if you jumped to this section without reading the rest of the manual first, you really should read through sections 2 to 5 before using the examples.

6.1 Long-Slit Target Acquisition and Observing Scripts

These scripts acquire long-slit spectra of a QSO pair, taking three 1200s dual-mode long-slit grating spectra through the 0.8-arcsec segmented long slit aligned so that both QSOs are along the slit. The trick is having excellent astrometry so there is no doubt about the slit position angle (Note: to protect the original, as-yet uncompleted MODS science verification project, I've changed the target name, coordinates, and position angle).

qsopair.acq:

```
#
# MODS Target Acquisition File
#

ACQMode SLIT

Archive:
  PARTNER LBTB
  PROPID  MPIA_QSOPair
  PI_NAME Hennawi

Target:
  OBJNAME Close QSO Pair
  OBJCOORDS 21:50:36.187 +37:14:00.99
  GUINAME GStar
  GUICCOORDS 21:50:46.717 +37:12:43.20
  POSANGLE 52.6
  AGWFILT Clear
  PRESET ACTIVE

Instrument:
  SLITMASK LS5x60x0.8
  ACQCamera Red
  ACQFilter r_sdss
  ACQexptime 60
  ACQROI 1Kx1K

Acquire:
  SlitGO
  AcqGO
  print Align the slit using modsAlign -l
  PAUSE
```

```

    SlitGO

end

qsopair.obs:
#
# MODS Observing Script
#
# Created: 2011 May 29 at 07:23:53 UTC by LBTO@obs2
# Program: mkMODSObs v0.4.5
#
OBSMODE

Archive:
PARTNER LBTB
PROPID MPIA_QSOPair
PI_NAME Hennawi

Instrument:
instconfig dual grating
slitmask LS5x60x0.8

Exec:
object Close QSO Pair
exptime 1200
nings 3
go

end

```

6.2 Multi-Object Spectrum Acquisition, Observing, and Calibration

This is for observations in the Bootes field. The mask was created by MMS as `Bootes.mms`, and then the `.acq` and `.obs` files were generated using `mms2obs` (§4.6). The command was

```
mms2obs Bootes -o 'Bootes MOS Field' -m dual grating -e 1200 -n 3 -t 60
```

We found a problem with the original guide star and selected another. We've left the original commented out in the `Target:` block for reference. The `.cal` script that follows takes flat field and comparison lamp spectra appropriate to dual-channel mode for this MOS mask. The `Bootes.mms` file was used to create the mask.

`Bootes.acq:`

```

#
# MODS Target Acquisition File
#
# Created: 2011 May 29 - 05:24:44 UTC by LBTO@obs2.lbt.as.arizona.edu
# Program: mms2obs v0.4.2
# Mask File: Bootes.mms
# Mask ID: M012bianmods+524713
#
ACQMode MOS

Archive:

```

```
PARTNER OSURC
PROPID MODS_Examples
PI_NAME Pogge
```

Target:

```
OBJNAME Bootes MOS Field
OBJCOORDS 14:32:45.560 +34:07:24.700
GUINAME GStar
GUICCOORDS 14:32:26.861 +34:07:02.20
# GUICCOORDS 14:32:31.262 +34:04:32.030
POSANGLE 75.000
AGWFILT Clear
PRESET ACTIVE
```

Instrument:

```
SLITMASK ID524713
ACQCamera Red
ACQFilter r_sdss
ACQexptime 60
```

Acquire:

```
SlitGO
AcqGO
print Align the mask using modsAlign...
PAUSE
SlitGO
```

end

Bootes.obs:

```
#
# MODS Observing Script
#
# Created: 2011 May 29 - 05:24:44 UTC by LBTO@obs2.lbt.as.arizona.edu
# Program: mms2obs v0.4.2
# Mask File: Bootes.mms
# Acquisition Script: Bootes.acq
#
```

OBSMODE

Archive:

```
PARTNER OSURC
PROPID MODS_Examples
PI_NAME Pogge
```

Instrument:

```
instconfig dual grating
slitmask ID524713
```

Exec:

```
object Bootes MOS Field
exptime 1200
nings 3
dgo
```

end

Bootes.cal

```
#
# MOS Mask Calibration Script
#
# Object: Bootes MOS Field
# Mask: ID524713
# Created: 2012 Sep 24 - 21:20:46 UTC by pogge@darkstar
# Program: mms2obs v1.0.1
# MMSFile: Bootes.mms
#

CALMODE

Archive:
  PARTNER OSURC
  PROPID MODS_Examples
  PI_NAME Pogge

Instrument:
  instconfig dual grating
  slitmask ID524713

Exec:
  nings 1

Flats:
  flat Bootes MOS Field - QTH+ND1.5
  blue exptime 5
  blue filter ND1.5
  red exptime 1
  red filter ND1.5
  lamp qth1 on
  go

  blue flat Bootes MOS Field - QTH+UG5
  blue filter UG5
  blue exptime 4
  blue go
  lamp off

  lamp vflat 10.0 on
  red flat Bootes MOS Field - VF10+Clear
  red exptime 1
  red filter clear
  red go
  lamp off

Comps:
  lamp hg ne on
  blue exptime 2
  blue filter ND1.5
  red exptime 1
  red filter ND1.5
```

```
comp Bootes MOS Field - Ne+Hg[Ar]
sleep 20
go
lamp off

lamp xe kr on
blue exptime 15
blue filter clear
red exptime 1
red filter nd1.5
comp Bootes MOS Field - Xe+Kr
go
lamp off

lamp ar on
blue exptime 30
blue filter clear
red exptime 1
red filter nd1.5
comp Bootes MOS Field - Ar
go
lamp off

end
```

6.3 Flux Standard Star Acquisition and Observation

These are for observations of the spectrophotometric flux standard star Feige 34. We are using the wide LS60x5 5-arcsec wide “fat slit” for the observations to avoid any slit losses or problems due to atmospheric dispersion. LBTO will have a library of standard star acquisition and observing scripts for general use, with exposure times worked out during commissioning. These scripts were written by hand.

feige34.acq:

```
#
# Feige 34 - MODS Primary Spectrophotometric Standard Star
#
# Uses the LS60x5 spectrophotometric calibration mask.
#
# Takes a field image, align with modsAlign -r, optional thru-slit
# image to refine as needed.
#
# Modified: 2012 Aug 1 [rwp/osu]
#

ACQMODE LongSlit

Archive:
  Partner CALIBRATION
  PropID CALIBRATION
  PI_Name All

Target:
  OBJNAME Feige 34
  OBJCOORDS 10:39:36.740 +43:06:09.26 14.09 -25.01 2000
  GUINAME 1330-0267893
```

```
GUICORDS 10:39:37.84 +43:03:15.53 # R=14.12
POSANGLE 0
AGWFILT Clear
PRESET ACTIVE

Instrument:
  SLITMASK LS60x5
  ACQCamera Red
  ACQFilter r_sdss
  ACQexptime 1
  ACQROI 1Kx1K

Acquire:
  AcqGO
  print Run modsAlign -r to put the star at the reference position
  PAUSE
  SlitGO

end
```

Here we get a little tricky. This is designed to take calibration spectra in dual grating and red-only grating modes, so we have omitted the instrument: block and inserted two custom functional blocks under the Exec: block that will change configuration and take two sets of spectra.

feige34.obs:

```
#
# Feige 34 - MODS Primary Spectrophotometric Standard Star
#
# Wide Slit, 120s grating, DUAL and RED modes, 3x each
#
# Modified 2012 Aug 1 [rwp/osu]
#

obsmode

Archive:
  Partner CALIBRATION
  PropID CALIBRATION
  PI_Name All

Exec:

DualGrating:
  instconfig dual grating
  slitmask LS60x5
  std Feige 34 dual grating
  nimgs 3
  exptime 120
  go

RedGrating:
  instconfig red grating
  slitmask LS60x5
  red std Feige 34 red grating
  red nimgs 3
```

```
    red exptime 120
    red go

end
```

6.4 Bias Calibration Frames

This takes 8Kx3K, 3Kx3K, and 4Kx3K bias images in both channels, 10 frames per configuration. These three readout modes are the defaults for grating spectra, imaging, and prism spectra, respectively.

allbias.cal:

```
#
# MODS All-Mode Bias Calibration Script
#
# Acquires 10 each Red and Blue CCD bias images for
# 1) 8Kx3K Grating Spectra ROI unbinned
# 2) 3Kx3K Imaging ROI unbinned
# 3) 4Kx3K Prism Spectra ROI unbinned
#
# Execution Time: 35 minutes for the entire set
#
# R. Pogge, OSU Astronomy Dept
# pogge@astronomy.ohio-state.edu
# 2010 Dec 16
#

CALMode

Archive:
  PARTNER CALIBRATION
  PROPID CALIBRATION
  PI_NAME ALL

Exec:
  Bias8K:
  print 8Kx3K Grating Spectral Bias Frames
  bias Bias 8Kx3K Grating Mode
  nimgs 10
  blue roi 8Kx3K
  red roi 8Kx3K
  dgo
  nimgs 1

  Bias3K:
  print 3Kx3K Imaging Bias Frames
  bias Bias 3Kx3K Imaging Mode
  nimgs 10
  blue roi 3Kx3K
  red roi 3Kx3K
  dgo
  nimgs 1

  PrBias:
  print 4Kx3K Prism Spectral Bias Frames
  bias Bias 4Kx3K Prism Mode
```

```
nimgs 10
blue roi 4Kx3K
red roi 4Kx3K
dgo
nimgs 1

end
```

Here, because we may not know which mode the instrument was left in (dual or single-channel), we use the explicit “DGO” command which takes simultaneous images in both channels.

It is not required to put each bias group into its own functional block, but doing so helps the overall organization, and will let us go back in and re-run a functional block if, for example, there was a problem found later and we need to re-run PrBias (e.g., `execMODS -b PrBias allbias.cal`).

6.5 Grating Wavelength Calibration Lamps

This script takes a full set of wavelength calibration lamps for the dual-grating mode. It uses pairs of lamps, filters, and exposure times that let us keep both channels active and run efficiently. We only need one spectrum of each lamp as the entire lamp ensemble will give you more than 100 lines in each channel, and exposures are so short cosmic ray hits are not an issue. Spectral ND1.5 filters are used to keep from saturating all but the very brightest lines. This script, or a variant on it, is the recommended wavelength calibration set for the dual grating mode.

`grlamps.cal`:

```
#
# Dual Grating Mode Lamps
#
# Sequence of Comparison Lamp spectra taken
# with the LS5x60x0.6 long slit in dual mode
# and the grating dispersers
#
# R. Pogge, OSU Astronomy Dept.
# pogge@astronomy.ohio-state.edu
# 2010 Dec 17
#
#-----

calmode

Archive:
PARTNER CALIBRATION
PROPID CALIBRATION
PI_NAME ALL

Instrument:
instconfig dual grating
slitmask LS5x60x0.6

Exec:
```

```
NeHgLamps:
# Ne + Hg Lamps - wait 30s for Hg to warm up
# ND1.5 filter in both channels.
print Ne+Hg Lamp Spectra
lamp hg ne on
print Waiting 30s for the Hg lamp to warm up
sleep 30
comp Ne + Hg[Ar] Lamps
blue exptime 2
blue filter ND1.5
red exptime 1
red filter ND1.5
nimgs 1
dgo
lamp off

KrXeLamps:
# Kr+Xe Lamps - Red: ND1.5 1s, Blue: Clear 15s
print Kr+Xe Lamp Spectra
lamp xe kr on
comp Xe+Kr Lamps
blue exptime 15
blue filter clear
red exptime 1
red filter nd1.5
nimgs 1
dgo
lamp off

ArLamps:
# Argon Lamp - Red: ND1.5 1s, Blue: Clear 30s
print Ar Lamp Spectra
lamp ar on
comp Ar Lamp
blue exptime 30
blue filter clear
red exptime 1
red filter nd1.5
nimgs 1
dgo
lamp off

end
```

This has a number of features to note:

1. It uses a print statement to inform the observer as to which set of calibrations are in progress.
2. It explicitly sets the number of images (nimgs) for each set
3. It explicitly turns off all lamps for each set.

All of these, while redundant, make for safe, informative scripts.

6.6 Imaging Script (ugriz standard star field imaging)

This example imaging (.img) script takes ugriz images in dual imaging mode of a standard star field. An imaging script (§5.4) is combines features of acquisition (.acq) and observing (.obs) scripts to “point-and-shoot” in one script, since no detailed object alignment step (e.g., with a slit mask) is required for direct imaging given the relative pointing precision of the LBT with good astrometric coordinates for the target and associated guide star.

m71bphot.img:

```
#
# MODS Imaging Script
#
# Created: 2011 Oct 18 - 14:11:19 UTC by stoll@tinsley
# Program: mkMODSImg v0.1.0
#

OBSMode

Archive:
  PARTNER OSURC
  PROPID CALIBRATION
  PI_NAME ALL

Target:
  OBJNAME M71B SDSS Field
  OBJCOORDS 19:53:35.451 +18:55:48.012
  GUINAME GStar
  GUICOOORDS 19:53:34.806 +18:52:13.53
  POSANGLE 0
  AGWFILT Clear
  PRESET ACTIVE

Instrument:
  InstConfig dual imaging
  SlitMask Imaging

Exec:
  Object M71B SDSS Field
  ExpTime 30
  NImgs 2
  blue filter g_sdss
  red filter r_sdss
  WFSWait
  GO
  # Remaining imaging commands start here...

  # u + 2xi
  blue filter u_sdss
  blue exptime 60
  blue nimgs 1
  red filter i_sdss
  red exptime 30
  red nimgs 2
  go

  # u + 2xz
```

```

red filter z_sdss
red exptime 30
red nimgs 2
go

nimgs 1

end

```

The exposure times are longer for the u filter, and we mix them up to keep the amount of open shutter time as high as possible. It is not really possible to balance exposure and readout times given the short exposures needed on standard fields with an 8.4m telescope, and it is pointless to try for a gain of only a few 10s of seconds for what are minutes of execution time.

The template this script was based on was generated using mkMODSImg with this command:

```

mkMODSImg m71bphot -o 'M71B SDSS field' -c '19:53:35.451
+18:55:48.012' -g '19:53:34.806 +18:52:13.53' -e 30 -n 2

```

The defaults for mkMODSImg are dual mode (equivalent to “-m dual”), PA=0 (equivalent to “-p 0”) and to start with the SDSS g and r filters in the blue and red channels, respectively. This command created the template file m71bphot.img with everything up to the comment

```

“# Remaining imaging commands start here...”

```

in the script. All commands after this comment were entered by-hand using an editor.

The WFSwait command before the first GO will pause script execution with a prompt for the observer to watch for active optics WFS convergence, then hit Enter to proceed.

6.7 Long Slit Spectra of a QSO dithering along the slit

In this script we acquire a QSO, then take 4 dual-channel grating spectra of 600sec each through the 0.8-arcsec segmented long slit, dithering by 10-arcsec either side of the original position and back. We will use absolute offsets in DETXY coordinates since our slit is oriented approximately along the parallactic angle for the time of this observation

Q1537.acq:

```

#
# MODS Target Acquisition File
#

ACQMode SLIT

Archive:
PARTNER OSURC
PROPID OSU_C4QSOs
PI_NAME Kochanek, Pogge, Peterson, Assef

Target:
OBJNAME Q1537-0146
OBJCOORDS 15:37:25.36 -01:46:50.3
GUINAME GStar
GUICCOORDS 15:37:17.427 -01:49:13.94
POSANGLE 20
AGWFILT Clear

```

```

PRESET ACTIVE

Instrument:
  SLITMASK LS5x60x0.8
  ACQCamera Red
  ACQFilter r_sdss
  ACQexptime 60
  ACQROI 1Kx1K

Acquire:
  SlitGO
  AcqGO
  print Align the slit using modsAlign -l
  PAUSE
  SlitGO
  UPDATEPOINTING

end

```

The last command, UPDATEPOINTING, tells the telescope control system to “absorb” the offset executed by modsAlign so that the post-offset position of the telescope with the target aligned with the slit becomes the (0,0) origin for all subsequent **absolute** offsets that might be executed by the following .obs script.

IMPORTANT NOTE: If you have to refine the slight alignment by hand, not using modsAlign, you need to remember to issue the “updatepointing” command by hand (or press the “Absorb” button on the Telescope pane of the MODS GUI dashboard) to ensure that the new telescope (0,0) reference position is set after the last offset is complete.

Q1537.obs:

```

#
# MODS Observing Script
#
# Created: 2011 May 29 at 06:13:32 UTC by LBT0@obs2.lbt.as.arizona.edu
# Program: mkMODSObs v0.4.5
#
# Modified to add dithering [rwp/osu 2011 May 30]
#

OBSMODE

Archive:
  PARTNER LBTSDT
  PROPID SV_OSUCIV
  PI_NAME Kochanek, Pogge, Peterson, Assef

Instrument:
  instconfig dual grating
  slitmask LS5x60x0.8

Exec:
  object Q1537-0146
  exptime 600
  nimgs 1
  go

```

```
offsetxy 0 +10 abs
go
offsetxy 0 -10 abs
go
offsetxy 0 0 abs
go

end
```

We are using `OFFSETXY` to make offsets in the `DETXY` coordinate system (which is really rotator-angle invariant `PCS_XY` coordinates that is aligned to the MODS long-slit “Y” axis). This is roughly along the X,Y axes of the red and blue CCD detectors, modulo small rotations of order 0.5° for each channel. Moving in +Y in `DETXY` coordinates moves along the slit north (when $PA=0^\circ$), and $\pm X$ is perpendicular to the slit.

Note that each `OFFSETXY` command must be followed by an explicit `GO` command in order to take an exposure. This is different from LUCI scripts, where an `OFFSET` command really means “`OFFSET-and-EXPOSE`”.

7 Script Command Summary

This section lists the MODS script commands, including arguments and brief functional descriptions. Arguments denoted by <> are required arguments, while arguments denoted by []'s are optional. Note that the <>s and []s are never typed.

7.1 Script Execution Mode Commands

One of these must appear as the first executable non-comment line of a script to establish what kind of script it is

7.1.1 **ACQMode** – Target Acquisition Mode

Usage: **ACQMode** <mode>

Where: <mode> = Imaging, Slit, or MOS

Only used in acquisition (.acq) scripts. It makes sure that the instrument is ready to point (“preset”) the telescope to a science target and acquire a guide star with the AGw system. It opens the instrument dark hatch if closed, retracts the calibration tower if in the beam and turns off all of the calibration lamps.

The different modes (Imaging, Slit, and MOS) determine the behavior of the target acquisition commands (§7.6).

ACQMode scripts may only be executed using `acqMODS`.

7.1.2 **OBSMode** – Observing Mode

Usage: **OBSMode** [restore]

Where:

restore Moves the AGw stage back to the last position before the last CALMode

Only used in observing (.obs) scripts. It makes sure that MODS is open to the sky, the calibration system is retracted, turns off all of the calibration lamps, and if the restore argument is given it moves the AGw guide probe back to the XY position stored on the previous CALMode command.

OBSMode scripts may only be executing using `execMODS`.

7.1.3 **CALMode** – Calibration Mode

Usage: **CALMode**

Only used for calibration (.cal) scripts where the instrument is closed to sky and configured with the calibration tower in the beam. Used for flat field, comparison lamp, bias, and dark calibrations. It retracts the AGw stage to the home position, storing the XY probe position in the science field for future reference (see OBSMode restore), and then inserts the calibration tower into the beam so that the science cameras, if exposed, are viewing the calibration integrating sphere.

CALMode scripts may only be executed using `execMODS`.

7.1.4 **SETUPMODE** – Instrument Setup Procedure Mode

Usage: **SETUPMODE**

Used to denote instrument setup procedure (.pro) script used for setup, shutdown, and routine housekeeping activities that do not, generally, care about the opened/closed state of the instrument to the sky (in contrast to the other 3 script modes).

7.2 LBTO Data Archive Commands

These are commands that load information into the CCD detector control computers for storage in the image FITS headers. These header keywords are used by the LBTO Data Archive to catalog and provide search and download access to raw MODS data.

7.2.1 **PARTNER** – set the LBTO Archive Partner ID header keyword

Usage: **PARTNER** <partnerID[,partner2,partner3]>

Where: partnerID is one of the valid LBTO Partner codes, multiple partners separated by commas.

Sets the **PARTNER** keyword in image FITS headers used to identify the LBTO partner the data belongs to. Multiple partners may be listed together separated by commas without spaces.

Valid partnerID codes are:

Partner Institutions: AZ, INAF, LBTB, OSURC, LBTO

Cross-partner Data: CALIBRATION, COMMISSIONING, LBTSdT

A **PARTNER** keyword must appear in the FITS headers or you will not be able to search for and retrieve raw MODS data from the LBTO data archive.

7.2.2 **PROPID** – set the LBTO Archive Proposal ID header keyword

Usage: **PROPID** <propString>

where: propString is a string with the Proposal ID

PROPID is used to identify the data within a **PARTNER** as being taken as part of a partner TAC-approved LBT observing program. Each LBTO partner institution uses its own convention. It is used by the LBTO data archive to further narrow down the ownership of raw data.

7.2.3 **PI_NAME** – set LBTO Archive project PI header keyword

Usage: **PI_NAME** <names of the PIs>

Gives the name(s) of the principal investigators of **PROPID** for **PARTNER**.

This FITS header keyword serves as another way to search for data in the LBTO Data Archive.

7.3 Target Preset Commands

These commands only appear in Target Acquisition (.acq) or Imaging (.img) scripts.

7.3.1 **OBJNAME** – set the Object Name of the science target

Usage: **OBJNAME** <target name string>

Sets the name of the science target for the observation. Appears in the acquisition image FITS headers as the **OBJECT** keyword. May be up to 40 characters long, but brevity is good.

May only be used in acquisition (.acq) or imaging (.img) scripts.

7.3.2 **OBJCOORDS** – set the Science Target RA and Dec coordinates

Usage: **OBJCOORDS** <hh:mm:ss.s ±dd:mm:ss.s>

Where:

hh:mm:ss.ss is the Right Ascension in sexagesimal hours

±dd:mm:ss.s is the Declination in sexagesimal degrees, the sign is **required**.

All coordinates must be specified in Equinox J2000.0.

Note that the colon (:) must appear as the separator between the sexagesimal components of the coordinates – **spaces are not allowed**.

May only be used in acquisition (.acq) or imaging (.img) scripts.

7.3.3 **GUINAME** – set the name of the guide star

Usage: **GUINAME** <guide star ID>

If there is no name for the guide star, GStar is an acceptable placeholder.

Stored as the **GUINAME** keyword in the image FITS headers, it has no other function at present except bookkeeping. Future versions of the LBTO TCS interface may do more with this.

May only be used in acquisition (.acq) or imaging (.img) scripts.

7.3.4 **GUICCOORDS** – set the Guide Star RA and Dec coordinates

Usage: **GUICCOORDS** <hh:mm:ss.s ±dd:mm:ss.s>

Where:

hh:mm:ss.ss is the Right Ascension in sexagesimal hours

±dd:mm:ss.s is the Declination in sexagesimal degrees, the sign is **required**.

All coordinates must be specified in Equinox J2000.0.

Note that the colon (:) must appear as the separator between the sexagesimal components of the coordinates – **spaces are not allowed**.

May only be used in acquisition (.acq) or imaging (.img) scripts.

7.3.5 **POSANGLE** – set the instrument celestial position angle

Usage: **POSANGLE** <pa>

Where:

pa = celestial position angle in decimal degrees, -180..180°

POSANGLE sets the instrument celestial position angle to use for the observation. PA is measured in decimal degrees from North thru East following standard astronomical practice. The rotator will track to maintain that celestial position during the observation.

This is an alias for “ROTATOR pa POSITION” which is the most common usage of the ROTATOR command, and you should use POSANGLE instead of the more general ROTATOR for most observing scripts. A similar command alias is used for LUCI scripts.

May only be used in acquisition (.acq) or imaging (.img) scripts.

See Also: ROTATOR

7.3.6 ROTATOR – set the rotator position angle and mode (deprecated)

Usage: **ROTATOR** <angle> <mode>

Where:

angle = rotator angle in decimal degrees

mode = POSITION or PARALLACTIC

ROTATOR sets the rotator position angle to use for the observation. This is a more general instrument rotator command than POSANGLE. For nearly all MODS observing scripts you should use POSANGLE, or if you wish to use ROTATOR, specify POSITION mode.

PARALLACTIC mode is only used for certain types of engineering scripts and should never be used by a science or calibration observing script.

NOTE: if ROTATOR is used, POSANGLE must not be appear.

May only be used in acquisition (.acq) or imaging (.img) scripts.

ROTATOR is deprecated except in special setup or engineering scripts.

See Also: POSANGLE

7.3.7 AGWFILT – select the AGw guide camera filter

Usage: **AGWFILT** <filterID>

Where: filterID is one of “Clear”, “F525LP”, “B_Bessel”, or “ND1.0”

Changes the filter used with the AGw unit guide camera. The most common default choice is the Clear filter, which has an effective central (“pivot”) wavelength of 621nm, equivalent to a wide V+R+I filter when convolved with the CCD response function, and guides at a good common wavelength for using MODS in dual-channel modes. The F525LP filter is a long-pass red filter that cuts off blue moonlight, and has a pivot wavelength of 695nm – there is little value added for using this to guide red-channel only spectra. The B_Bessel filter is a standard B filter with a pivot wavelength of 431nm used when guiding on very blue targets in the blue channel. The ND1.0 is a neutral density 1.0 (10x attenuation) filter with the same bandpass as the Clear filter.

The AGWFILT command must come **BEFORE** the PRESET command, as the AGw camera filter must be set before the guide star is acquired during an active or guide preset.

May only be used in acquisition (.acq) or imaging (.img) scripts.

See Also: PRESET

7.3.8 **PRESET** – set the Telescope Preset mode

Usage: **PRESET** <presetMode>

Where: presetMode is one of

active – guide and use active optics to actively collimate the telescope

guide – guide only without using the active optics wavefront sensor

track – only track open-loop at the sidereal rate but do not guide or use active optics

Gives the mode for the telescope preset to be executed by `acqMODS`. Most observations will make active presets (the other modes are for engineering activities).

May only be used in acquisition (.acq) or imaging (.img) scripts.

7.4 Instrument Configuration Commands

These commands are used to configure the instrument optical chain for the observation and turn on and off comparison lamps.

7.4.1 **INSTCONFIG** – Select the instrument optical configuration

Usage: **INSTCONFIG** <mode> <disperser>

Where:

mode – is the instrument mode, one of **dual**, **red**, or **blue**

disperser – is the disperser to use, one of **imaging**, **grating**, or **prism**

Configures the instrument for the observation:

Dual Mode operates the blue and red channels with the dichroic

Red Mode operates the red channel bypassing the blue (red fold flat)

Blue Mode operates the blue channel bypassing the red (no dichroic)

The choice of disperser can be one of

imaging – configure for direct imaging using the imaging flat

grating – configure for R=2000 grating spectroscopy using the gratings

prism – configure for low-res prism spectroscopy with the double-pass prisms

Both channels are configured the same (hybrid modes are impractical) in dual mode.

Instrument configuration takes up to 60 seconds maximum depending on the longest grating turret travel required, but is usually less. This includes about 20 seconds of IMCS lock-on overhead.

This command should normally only appear in observation, calibration, and procedures scripts; acquisition scripts autoconfigure.

7.4.2 **SLITMASK** – Select the slit mask used for an observation or acquisition

Usage: **SLITMASK** <maskID> or **SLITMASK** <in|out>

Where:

maskID – ID of the slit mask to deploy

in – insert the current slit mask into the science beam

out – extract the current slit mask from the science beam and stow in the cassette

Typical slit mask exchange times require between 10 and 20 seconds maximum, including insert/retract overhead.

When used in Acquisition scripts (§5.2.4), the slit mask is automatically inserted or retracted depending on the acquisition command (see §7.6).

When used in Observing or Calibration scripts, it automatically inserts the mask into the science beam after the instrument configuration step.

In Imaging Mode, the default `Imaging` field stop mask is used, but it should be specified explicitly. Note that the imaging field stop mask is part of the focal plane baffling system, and so using no mask in the beam for imaging will increase stray light into the instrument.

Facility long-slit and test masks have fixed names, e.g., `LS5x60x0.5` (0.5-arcsec wide segmented long-slit) as described on the MODS website.

Custom multi-object masks must be named `ID#####`, where `#####` is the 6-digit unique ID code assigned by the MMS mask design program.

The explicit `IN` or `OUT` directive only applies to the currently selected `maskID`. If given on the command line with the `maskID`, the `IN/OUT` directive is ignored.

7.4.3 **FILTER** – Select a camera filter

Usage: **[Blue|Red] FILTER <filterID>**

Where:

Blue – select the Blue Camera filter

Red – select the Red Camera filter

filterID – name of the filter to select in the blue/red camera

Selects the filter to be used for an observing script (`.obs`, `.cal`, or `.pro`). Not used in acquisition scripts (use `AcqFilter` instead).

Filters are selected by name, see the MODS website for the current filter complement. Note that there are a mix of imaging (square) and spectral (rectangular) filters available. The `INSTCONFIG` command will select the default filter for spectral modes.

Note that because the filter thickness is part of the optical prescription, use of no filter is bad – the cameras will be out of focus. For an unfiltered image, use the Clear filter in each camera.

7.4.4 **LAMP** – Select and Control Calibration Lamps

Usage: **LAMP <lamp1 [lamp2 lamp3 ...] > ON** or **LAMP [lamp1 lamp2] OFF**

Where:

lamp1 – first lamp to select

lamp2 – second lamp, ...

ON – turn the selected lamp(s) ON

OFF – turn the selected lamp(s) OFF – if no lamps selected, TURN ALL OFF

Turns calibration lamps on or off. The current selection of lamps is listed on the MODS webpage.

Lamps may be turned on one or many at a time.

The `LAMP OFF` command turns off all of the calibration lamps.

A special variable-intensity flat-field lamp allows for an additional selection of the lamp brightness:

```
LAMP VFLAT level ON
```

will turn on the variable-intensity lamp. The level is an integer between 1 and 11.

`LAMP` must only be used in calibration (`.cal`) scripts with the instrument in `CALMode`.

7.5 Exposure Control Commands

These commands setup and take exposures on the blue and red channels.

7.5.1 **OBJECT** – Setup to take an object exposure

Usage: **OBJECT** <target name>

Sets the `OBJECT` header keyword to “target name” and `IMAGETYP` to `OBJECT`. An object image is an open-shutter science observation of the given exposure time.

If used without the `Blue` or `Red` qualifier, it sets the object name and image type the same on both channels, otherwise use “blue object” and “red object” to set each channel individually.

7.5.2 **BIAS** – Setup to take an bias (zero) frame

Usage: **BIAS** <bias name>

Sets the `OBJECT` header keyword to “bias name” and `IMAGETYP` to `BIAS`. A bias image is a zero-duration closed-shutter bias frame: the CCD is erased then immediately readout. Sets `EXPTIME` to 0.

If used without the `Blue` or `Red` qualifier, it sets the name and image type the same on both channels, otherwise use “blue bias” and “red bias” to set each channel individually.

Ideally the instrument is closed to the sky in `CALMode` during bias frames.

Note that the detailed 2D structure in a `BIAS` image depends on the `CCD ROI` mode (see §7.5.11) so you need separate biases for each `ROI` you use for science data.

7.5.3 **FLAT** – Setup to take an flat-field exposure

Usage: **FLAT** <flat name>

Sets the `OBJECT` header keyword to “flat name” and `IMAGETYP` to `FLAT`. A flat is an open-shutter calibration observation of the internal flat-field lamps of the given exposure time.

If used without the `Blue` or `Red` qualifier, it sets the object name and image type the same on both channels, otherwise use “blue flat” and “red flat” to set each channel individually.

Because it implies it is looking at the internal calibration sources, it should only be used in `CALMode`.

See `LAMP` for how to turn on the flat field lamps.

7.5.4 **SKY** – Setup to take a twilight sky flat-field exposure

Usage: **SKY** <sky flat name>

Sets the OBJECT header keyword to “sky flat name” and IMAGETYP to SKY. This is an open-shutter twilight sky flat observation of the given exposure time.

If used without the `Blue` or `Red` qualifier, it sets the object name and image type the same on both channels, otherwise use “blue sky” and “red sky” to set each channel individually.

Note that because it is observing the twilight sky, this can only be used in `OBSMode`.

7.5.5 **COMP** – Setup to take a wavelength comparison lamp exposure

Usage: **COMP** <comp name>

Sets the OBJECT header keyword to “comp name” and IMAGETYP to COMP. This is an open-shutter exposure of comparison lamps in the internal calibration system.

If used without the `Blue` or `Red` qualifier, it sets the object name and image type the same on both channels, otherwise use “blue comp” and “red comp” to set each channel individually.

Note that because it is observing the calibration system, it should only be used in `CALMode`.

See `LAMP` for how to turn on the comparison lamps.

7.5.6 **STD** – Setup to take a flux calibration object exposure

Usage: **STD** <flux standard name>

Sets the OBJECT header keyword to “flux standard name” and IMAGETYP to STD. This is an open-shutter exposure of on a flux calibration target (either a photometric calibration field image or a spectrophotometric flux standard star spectrum).

If used without the `Blue` or `Red` qualifier, it sets the object name and image type the same on both channels, otherwise use “blue std” and “red std” to set each channel individually.

Note that because it is observing an astronomical target, it must only be used in `OBSMode`.

7.5.7 **DARK** – Setup to take a dark exposure

Usage: **DARK** <dark name>

Sets the OBJECT header keyword to “dark name” and IMAGETYP to DARK. A dark image is a closed-shutter integration of the current `EXPTIME`.

If used without the `BLUE` or `RED` qualifier, it sets the object name and image type the same on both channels, otherwise use “blue dark” and “red dark” to set each channel individually.

Note that because it is ostensibly measuring dark signal accumulation on the unexposed CCD detectors, it should only be used in `CALMode`.

7.5.8 **EXPTIME** – Set the single-image exposure (integration) time

Usage: **EXPTIME** <seconds>

Sets the single-image exposure time in seconds. If used without the RED or BLUE qualifiers, it sets the exposure time the same on both cameras, otherwise use “red exptime” and “blue exptime” to set the exposure times separately on the red and blue cameras.

The minimum exposure time is 1 second. The longest practical single-image exposure time is ~1800 seconds (limited by cosmic ray accumulation, especially on the thick red CCDs).

IMPORTANT: EXPTIME must **FOLLOW** OBJECT, FLAT, COMP, etc. in a script, and **CANNOT** be used with BIAS.

7.5.9 **NIMGS** – Set the number of exposures to acquire

Usage: **NIMGS** <num>

Where: num is the number of images to take (1 to 99).

Sets the number of exposures to be taken with the next GO command. If given without the RED or BLUE qualifier, it sets the same number of exposures to take on both cameras, otherwise use “red nimgs” and “blue nimgs” to set the number of exposures separately on the red and blue cameras.

The total integration time will be (nimgs)×(exptime) seconds.

7.5.10 **CCDBIN** – set the CCD on-chip binning factor

Usage: **CCDBIN** <n> or **CCDBIN** <nX nY>

Sets the CCD on-chip binning factor.

If only 1 number is given (e.g., ccdbin 2), both axes are binned the same (n×n), otherwise if two numbers are given, the CCD is binned nX×nY. In any case, the binning factor must be 1 or a power of 2 up to 8, thus only n=1,2,4,8 are allowed.

If no RED or BLUE qualifier is used, the binning factor is set the same on both channels, otherwise use “red ccdbin” or “blue ccdbin” to set the binning separately on the two channels.

Unbinned operation is set by default by INSTCONFIG, so any setting of CCDBIN must come after INSTCONFIG in a script.

NOTES:

Binning is not “sticky”. If you set binning to 2×2 pixels in one script, it will get reset to the default 1×1 by the next script.

In general, the readout noise of $2.5e^-$ is so low that there is little or no noise penalty for binning in software after the fact. The only gain is in readout time, but because of irreducible setup and readout overhead, the readout time does not scale inversely with the product of the binning factors. See the MODS website for the current readout times in different binning modes.

7.5.11 **ROI** – Set the CCD subframe readout (Region-Of-Interest) mode

Usage: **<RED|BLUE> ROI <roiMode>**

Sets the CCD subframe readout (region-of-interest) mode. Only preset ROIs are allowed, and these are all centered on the CCD (the intersection of the 4 readout amplifier quadrants). The preset ROI modes available are:

- 1Kx1K – Central 1024×1024 pixels
- 2Kx2K – Central 2048×2048 pixels
- 3Kx3K – Central 3072×3072 pixels (full Imaging Field)
- 4Kx3K – Central 4096×3072 pixels (Prism-mode full MOS footprint)
- 8Kx3K – Full frame readout (Grating-mode full MODS footprint)

Note that ROI must include the RED or BLUE qualifier.

ROI is not “sticky” – INSTCONFIG will automatically set the unbinned default ROI mode for the three major instrument modes:

- Imaging – 3Kx3K
- Grating – 8Kx3K
- Prism – 4Kx3K

ROI should only be used in OBSMode or CALMode, as the ROI mode for Acquisition Scripts is set by the AcqROI command (§7.6.4).

7.5.12 **GO** – Start an integration sequence

Usage: **GO**

Start an integration sequence. On each active channel, GO takes NIMGS IMAGETYP integrations of EXPTIME each.

The behavior of GO without a RED or BLUE qualifier depends on the instrument mode set by INSTCONFIG:

- Dual Mode – start integration sequences simultaneously on the blue and red channels
- Blue Mode – start the integration sequence on the blue channel, but leave red idle
- Red Mode – start the integration sequence on the red channel, but leave blue idle

This can be overridden by adding the RED or BLUE qualifier. For example, in Dual Mode, “BLUE GO” will start an integration sequence on the blue channel but leave red idle, and vis-versa for “RED GO”.

NOTE: GO should not be used in ACQMode, as the special AcqGO and SlitGO commands are provided to make sure of the slit position in the science field (see §7.6.5 and 7.6.6).

7.5.13 **DGO** – Start an integration sequence on both channels

Usage: **DGO**

Starts integration sequences on both blue and red channels, overriding the instrument mode (dual, blue, or red) set by INSTCONFIG. It is most often used in “dark” calibration acquisitions like bias and dark frames, since those image types are independent of the optical configuration of the channels.

DGO should not be used in ACQMode scripts.

7.6 Target Acquisition Commands

These are special commands used in Target Acquisition (.acq) scripts to select the configuration for the target acquisition images and to start thru-slit and field images.

7.6.1 ACQCamera – Select the camera to use for acquisition images

Usage: **ACQCamera** <red|blue>

Selects the Red or Blue camera for acquiring targets. Only one channel may be used for target acquisition.

IMPORTANT: ACQCamera must come **BEFORE** all other ACQxyz command.

7.6.2 ACQFilter – Select the camera filter for acquisition images

Usage: **ACQFilter** <filterID>

Select filterID as the camera filter for acquisition images. The filterID must be a valid filter loaded in ACQCamera.

This command must come **after** ACQCamera in acquisition scripts.

7.6.3 ACQExpTime – Set the acquisition image exposure time

Usage: **ACQExpTime** <seconds>

Sets the integration time in seconds for an acquisition image. Only a single acquisition image is taken at a time with AcqGO or SlitGO.

This command must come **after** ACQCamera in acquisition scripts.

7.6.4 ACQROI – Set the CCD readout ROI for acquisition images

Usage: **ACQROI** <roiMode>

Where: roiMODE is one of the valid CCD ROI modes defined in §7.5.11 above. The default is 3Kx3K (full imaging field).

For ACQMode MOS target acquisition, the default 3Kx3K ROI should be used.

For ACQMode Slit target acquisition, either 3Kx3K or 1Kx1K are often used.

Also, as with ROI, this setting is not “sticky”, it will be reset by the next .obs script.

7.6.5 AcqGO – Take a field (no slit) acquisition image

Usage: **AcqGO**

Retract the slitmask and take a single image of ACQExpTime seconds of the target field.

7.6.6 SlitGO – Take a thru-slit acquisition image

Usage: **SlitGO**

Insert the slitmask and take a single image of ACQExpTime seconds through the slit.

Note that you can change the exposure time by setting `ACQExpTime` immediately before `SlitGO`, though this is usually only done for very bright targets that would saturate the field images and where a longer thru-slit image is needed to see the slit against the sky.

7.7 Script Flow Control and Printing Commands

The commands are internal to `acqMODS` and `execMODS`, and are used to control the flow of execution (pause and sleep) or print messages (`print`) on the screen for the observers.

7.7.1 PAUSE – Pause execution of a script

Usage: **PAUSE**

Pauses execution of the script, printing a prompt asking the user to hit the Enter key to resume execution or X to abort the script.

It is good script form to precede a `PAUSE` command with a `PRINT` statement telling the observer why the script is pausing.

See Also: `WFSWait`

7.7.2 PRINT – Print a message to the terminal screen

Usage: **PRINT** <message string to print>

Prints a message string on the terminal where the script is running.

Print statements are used to give a progress report in the case of long scripts (e.g., long calibration sequences), or to print messages before `PAUSE` or `SLEEP` statements to let the observers know why the script is `PAUSED` or `SLEEPing`.

7.7.3 SLEEP – Stop script execution and sleep for a time interval

Usage: **SLEEP** <seconds>

Stop script execution and sleep for a number of seconds. A countdown is printed on the screen, and any broadcast messages from the MODS data-taking system are printed on the terminal as usual while a sleep is in progress (“sleep with one eye open”).

Common uses of sleep are to pause for a fixed time to allow certain operations to complete, like waiting for the Hg(Ar) comparison lamp to warm up for 30 seconds. It is most often used, however, in engineering instrument procedure (.pro) scripts for pauses in testing scripts.

See Also: `PAUSE`, `WFSWait`

7.7.4 WFSWait – Pause execution of a script to wait for WFS convergence

Usage: **WFSWait**

Pauses execution of the script, printing a prompt asking the user to hit the Enter key when the active optics has converged to resume execution or X to abort the script.

`WFSWait` is a version of `PAUSE` with a canned message. It is used in imaging scripts (§5.4) to pause script execution between pointing and instrument configuration and start of the science observing to allow the active optics collimation loop to converge.

In the current version of MODS scripting, `WFSWait` is purely manual: it requires the observer to monitor the GCS GUI to watch for the RMS Wavefront Error (WFE) to drop below threshold (usually 400nm, but opinions vary and it depends to some degree on seeing conditions and the state of telescope thermal equilibration).

Future versions of this command may watch the GCS actively in the background, and either proceed when a collimation convergence threshold is passed, timeout if collimation convergence has taken too long, or allow manual override by the observer. At present, we have, in effect, only implemented the manual override mode.

See Also: `WFSWait`

7.8 Telescope Commands

These commands are used to offset the telescope and pause/resume guiding.

7.8.1 **OFFSET** – Offset the telescope in celestial (RA,Dec) coordinates

Usage: **OFFSET** <dRA dDec> <ABS|REL>

Where:

- dRA – RA offset in arcseconds, + = E, - = W (includes the $\cos\delta$ correction)
- dDec – Dec offset in arcseconds, +=N, -= S
- ABS – make an absolute offset relative to the pointing reference
- REL – make an offset relative to the current position

OFFSET will offset the telescope in celestial coordinates (“RADEC” coordinates in LBT TCS terminology). Absolute offsets are made relative to where the telescope landed and locked on the guide star after the preset (the “pointing reference”), whereas relative offsets are made from the current location.

The guide probe follows the offset (unless you drive the probe outside limits, at which point the GCS should just go open loop until a subsequent offset brings the star back into the field, but there is no guarantee the GCS will in fact resume active guiding in that case).

OFFSET is normally only used for executing blind offsets or some imaging dither patterns. For doing offsets along the slit or to place targets on the slit, use **OFFSETXY**.

Remember: **OFFSET** moves the telescope not the sky. For example, an eastward offset of the telescope moves the target *westward* on the detector.

7.8.2 **OFFSETXY** – Offset the telescope in the Slit XY coordinates

Usage: **OFFSETXY** <dX dY> <ABS|REL>

Where:

- dX – X-axis offset in arcseconds, +/- X_{CCD} motion (perpendicular to the slit)
- dY – Y-axis offset in arcseconds, +/- Y_{CCD} motion (parallel to the slit)
- ABS – make an absolute offset relative to the pointing reference
- REL – make an offset relative to the current position

OFFSETXY moves the telescope in slit plane XY coordinates (“DETXY” coordinates in LBT TCS terminology, but the coordinate system is really rotator-angle invariant PCS_XY coordinates that are roughly aligned to within 0.5 degrees of the MODS CCD detectors).

Absolute offsets are made relative to where the telescope landed and locked on the guide star after the preset (the “pointing reference”). This can be reset using the `UPDATEPOINTING` command.

Relative offsets are made from the current location:

A `+X` offset moves a star in the `+X` direction on the CCD, perpendicular to the slit.

A `+Y` offset moves a star in the `+Y` direction on the CCD, parallel to the slit.

`OFFSETXY` is what you use to move an object onto the slit (it or a variant are what is sent by `modsAlign`), and `OFFSETXY` in the `+/-Y` direction will dither an object along one of the segmented long-slit masks.

At $PA=0^\circ$ `OFFSETXY` has the same orientation in celestial coordinates as `OFFSET`: `+x` = East ($+\Delta\alpha$), `+y` = North ($+\Delta\delta$).

Remember: `OFFSETXY` moves the telescope not the sky. For example, an `OFFSETXY` in the `+x` direction at $PA=0^\circ$ will move the telescope east, causing the object to appear to move *west* on the CCD (hence along the `+X` direct in detector pixel coordinates).

7.8.3 `UPDATEPOINTING` – Set (“Zero”) the Telescope Pointing Reference

Usage: `UPDATEPOINTING`

Instructs the telescope control system to “absorb” the position of the telescope after an offset and make the current position the (0,0) reference position for absolute offsets – the so-called “pointing reference”.

This command should follow any `OFFSET` or `OFFSETXY` command that centers a target in the slit (either a blind offset or an alignment offset). Note that the `modsAlign` program sends this command after executing the offset of the targets onto the slits, so this is not a routine command that needs to be used in most acquisition scripts.

7.8.4 `GPAUSE` – Pause guiding and active optics but keep tracking open loop

Usage: `GPAUSE`

Instructs the GCS to stop closed-loop guiding and (if an active preset) suspend active optics corrections. The telescope and rotator will continue to track open loop.

This would be used to temporarily pause guiding for some instrument operation that would interfere with normal guiding and active optics (e.g., closing the hatch to take a quick dark).

Guiding can be resumed with `GRESUME`.

Note that this mode has been tested, but not extensively by MODS during commissioning. Use at your own risk (note: calibration-in-place is rarely indicated for MODS, as described in the *MODS Calibration Procedures* document and is risky).

7.8.5 `GRESUME` – Resume guiding and active optics after a `GPAUSE`

Usage: `GRESUME`

Attempts to resume closed-loop guiding and (if an active preset) active optics corrections following a `GPAUSE`. Has not been extensively tested with MODS at this writing.