

OSURC Nightlog 20220702 UT

Observer*: B.Rothberg, R.T. Gatto

Lead Partner Observer*: P.Garnavich,D.Reed

Telescope Operator:D.G.Huerta

AO Support*: G.Taylor

*** = from home**

Night Info (AZ Time):

- Sunset: 19:31
- Nautical Twilight Ends: 20:35
- Astro Twilight Ends: 21:13
- Moonset: 21:55
- Astro Twilight Starts: 03:35
- Nautical Twilight Starts: 04:13
- Sunrise: 05:16
- Moon Illumination < 10%

Plan:

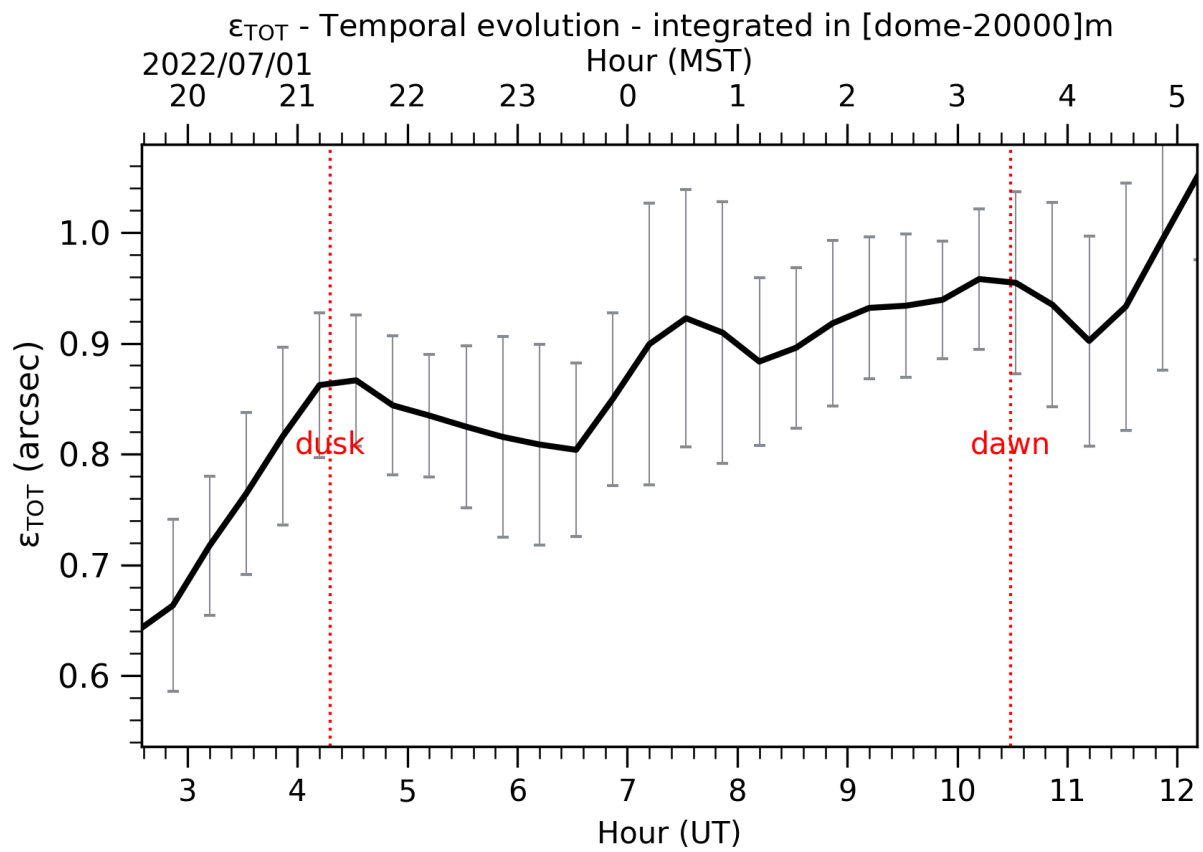
- Start with MODS-Bino, hope for the best

Summary:

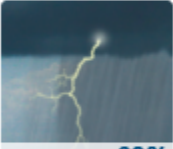
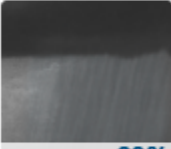
Issues:

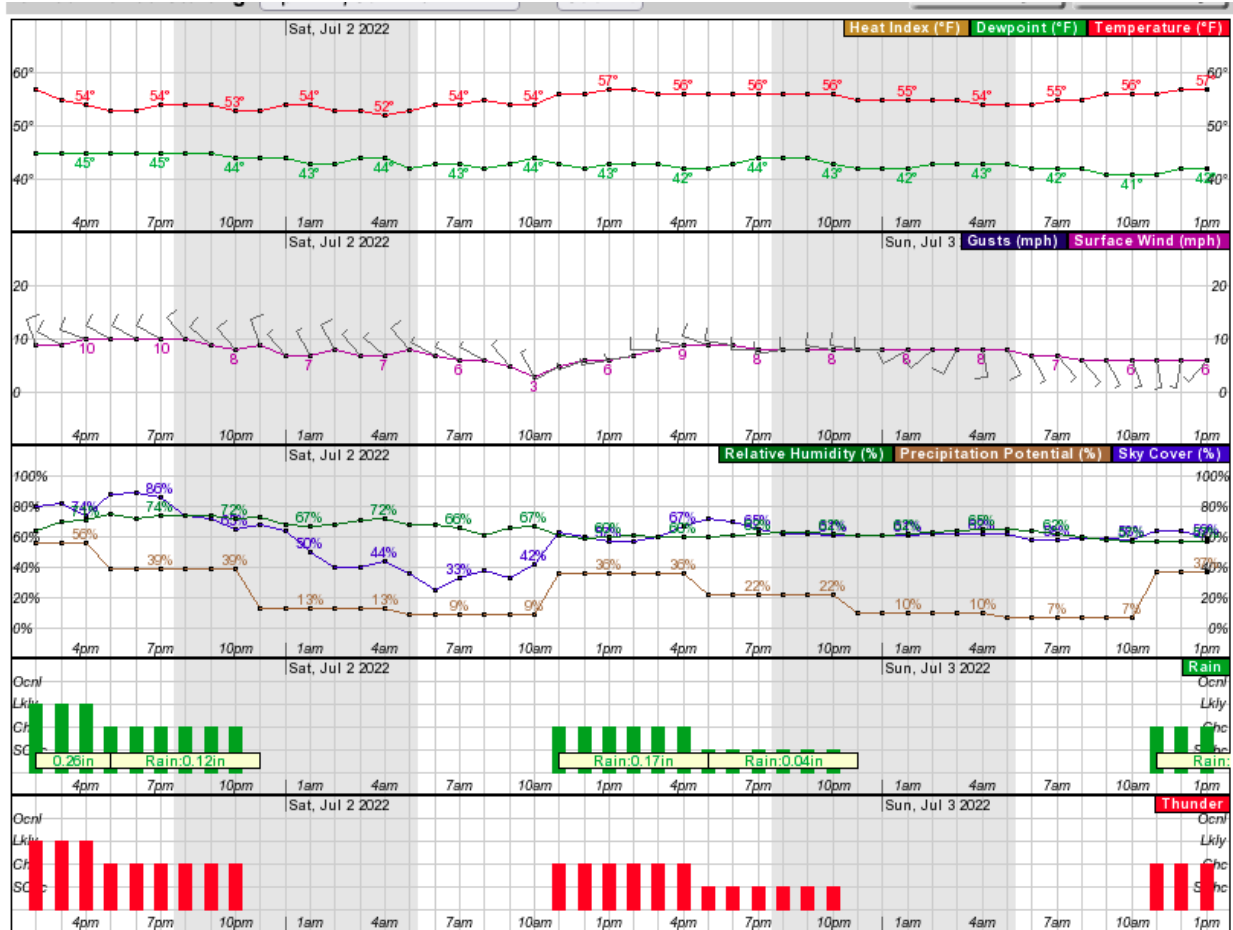
Weather:

Predicted Seeing from ALTA:



NOAA Forecast:

This Afternoon	Tonight
 60%	 30%
T-storms Likely	Chance Showers

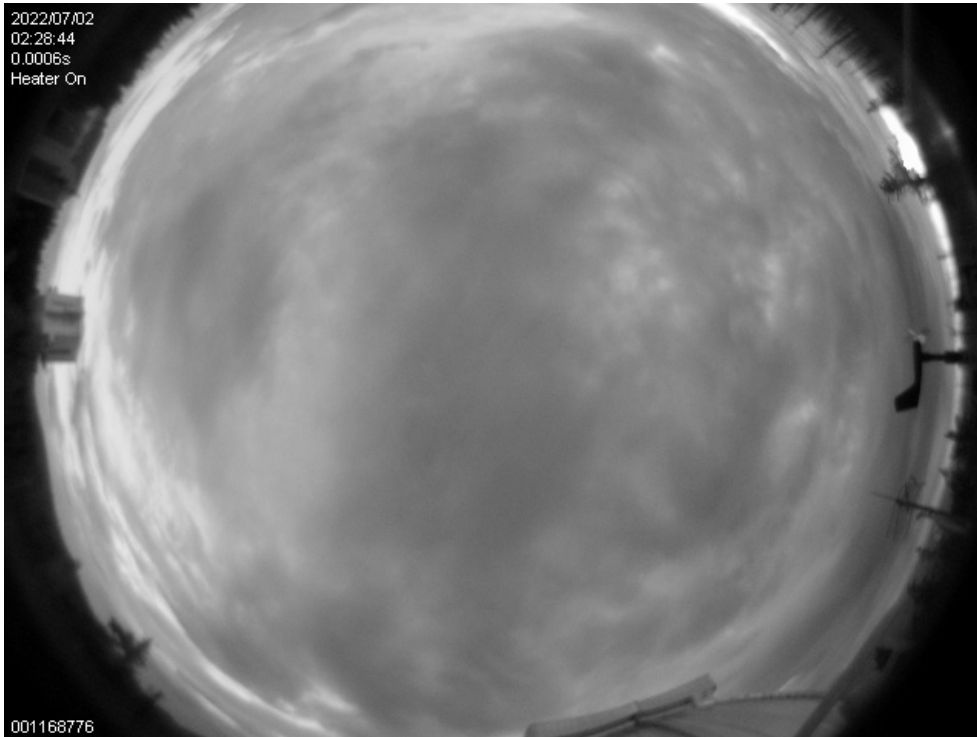


Log (times are given in UT)

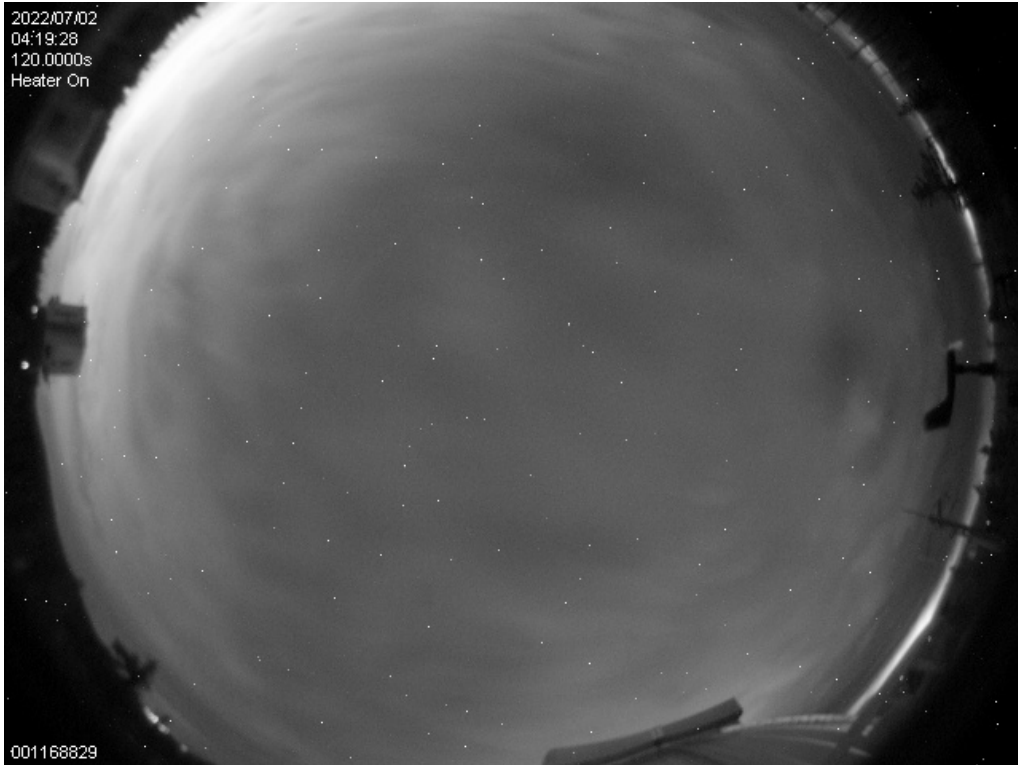
Closed Dome:

- UT 00:30 - starting up MODS GUIs - wake MODS, simSnap
- 00:39 - snaps OK - (look similar to MODS1 flats as before) - had to run reds fitsflush for both M1R images
- UT 00:40 - bringing up OBS5 and start LUCI and LBC GUIs (as backups) - OK
 - UT 00:44 - init all LUCI - test darks
 - L1 0001-0002 - 2.51sec dark
 - L2 0001-0002 - 2.51sec dark
- 00:47 - starting LBCs
- 00:53 - taking test biases LBCs
 - Also note that unable to connect to windows PC on mountain for TMS - apparently there are two other login sessions active - sent email to TMS folks to help resolved
 - Electronic noise on biases - will take more later with lights off in dome

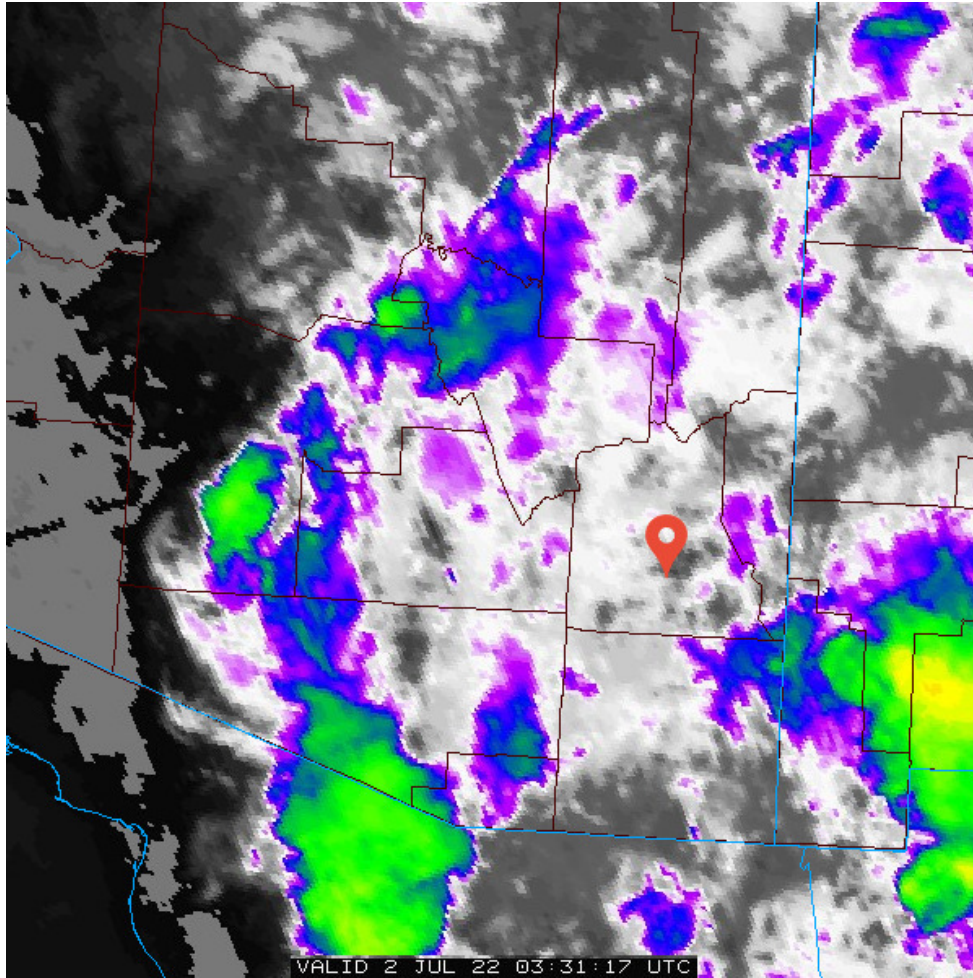
- A.Rakich replied - issues with accessing Teamviewer to operate the TMS controls on the windows machine - so not available - checking on impact to tomorrow and alternate methods of running things
- 01:06 - D.G.Huerta reconfiguring for bino-MODS
- 01:33 - MODS in observing mode - test preset - OK
- 01:36 - closing hatches on MODS
- 02:31 - closed at sunset for clouds



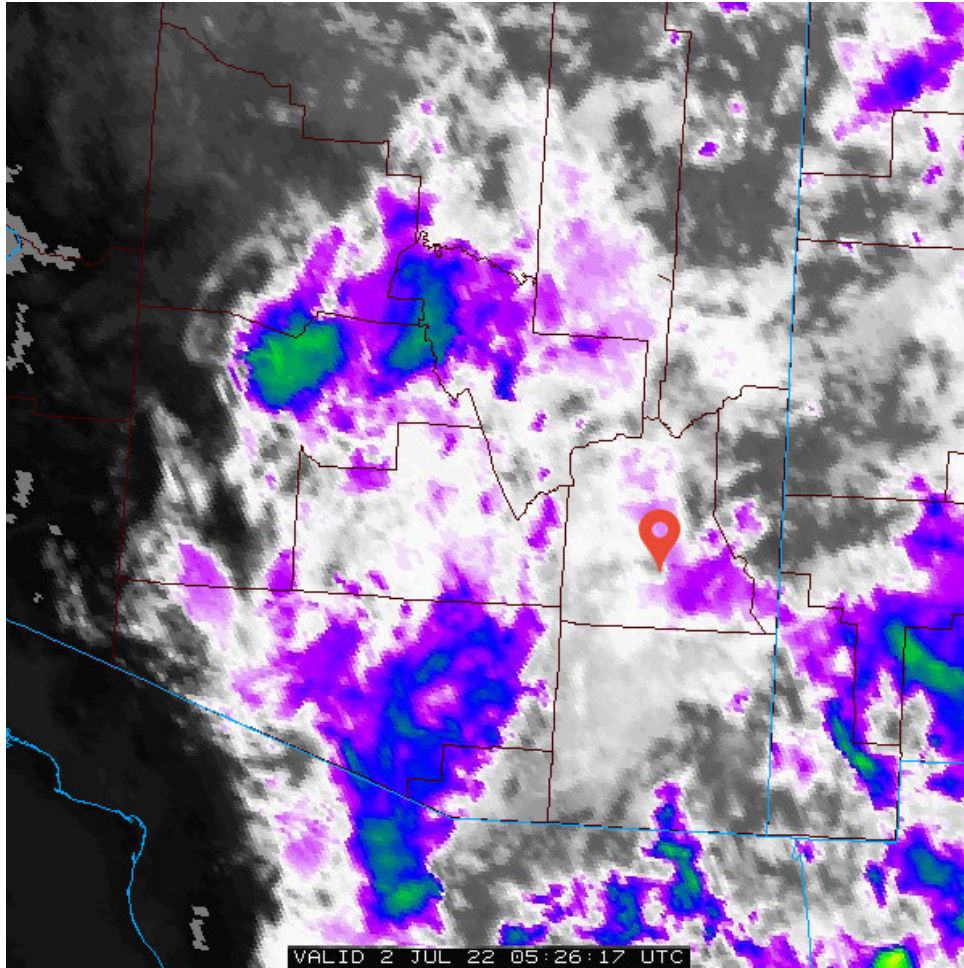
- 02:38 - we seem to have solved the TMS connection issue to the PC - so we are good to go for using TMS tonight (assuming the weather improves and conditions are met for LBCs)
- 02:59 - still closed for clouds - humidity hovering around 55-60% level
- 03:28 - still closed for clouds - allsky pretty much looks like image above - humidity showing bumps up to 70%+, but oddly SMT is 22.5% humidity (inversion layer on the mountain?) - idle
- 03:39 - i think the SMT weather station is frozen (or ambient conditions around the SMT are magically stationary)
- 03:58 - humidity on the uptick, approaching 80% - allsky still thick clouds
- 04:25 - allsky image:



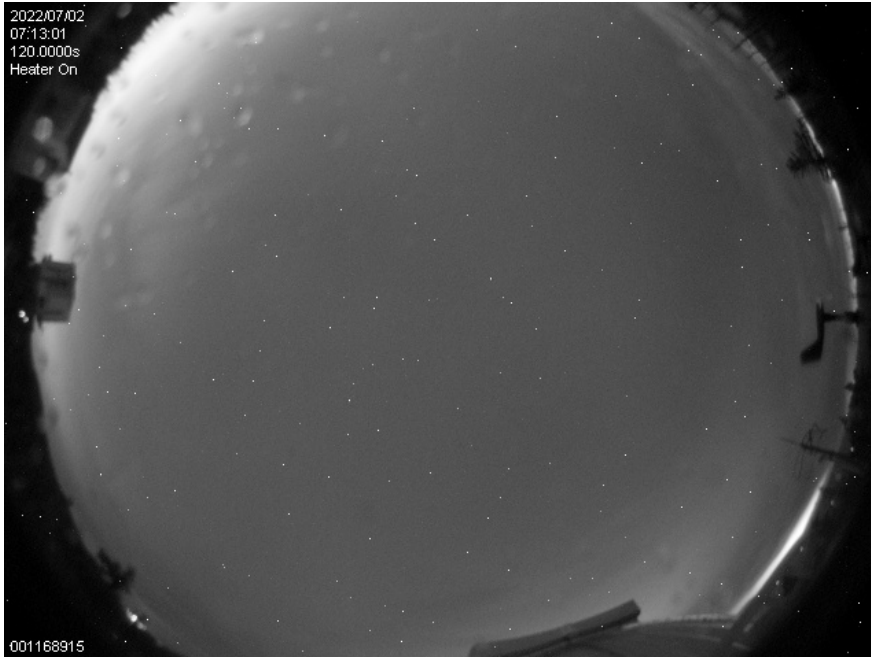
- - Those aren't stars - those seem to be hot pixels
- Humidity now above 80%
- 05:13 - all-sky looks about the same - humidity up and down between 70-85%
- Radar map



-
- 06:00 - thick clouds in allsky - radar image looks similar to the one above, humidity down to the 60-70% range



-
- 07:00 - still thick clouds - humidity 69% - radar map similar to above - colors appear and vanish around mountain
- 07:17 - see precipitation on allsky camera - DGH confirms some rain - will check chamber shortly



-
- 08:00 - still thick clouds - humidity 72%
- 09:00 - still thick clouds - humidity up to 82%
- 10:00 - still thick clouds - humidity 78%
- 10:04 - powering off LBCs - time to reconfigure would put us into astro-twilight and highly unlikely skies would clear out fast enough
- 10:10 - reconfiguring from MODS to LUCIs
- 10:14 - putting MODS to sleep now - if we were to open, try LUCI
- 10:26 - OSURC calling the night
- Leaving LUCIs in the beam for daytime testing

On-sky:

No chance to Open

Calibrations:

None - only LUCI cals left - will run in morning of Jul 3 if we get on-sky Jul 3 UT