

OSURC Nightlog 20220703 UT

Observer*: B.Rothberg, R.T. Gatto

Lead Partner Observer*: P.Garnavich,D.Reed

Telescope Operator:D.G.Huerta

AO Support*: G.Taylor

*** = from home**

Night Info (AZ Time):

- Sunset: 19:31
- Nautical Twilight Ends: 20:35
- Astro Twilight Ends: 21:12
- Moonset: 22:28
- Astro Twilight Starts: 03:35
- Nautical Twilight Starts: 04:13
- Sunrise: 05:16
- Moon Illumination < 15%

Plan:

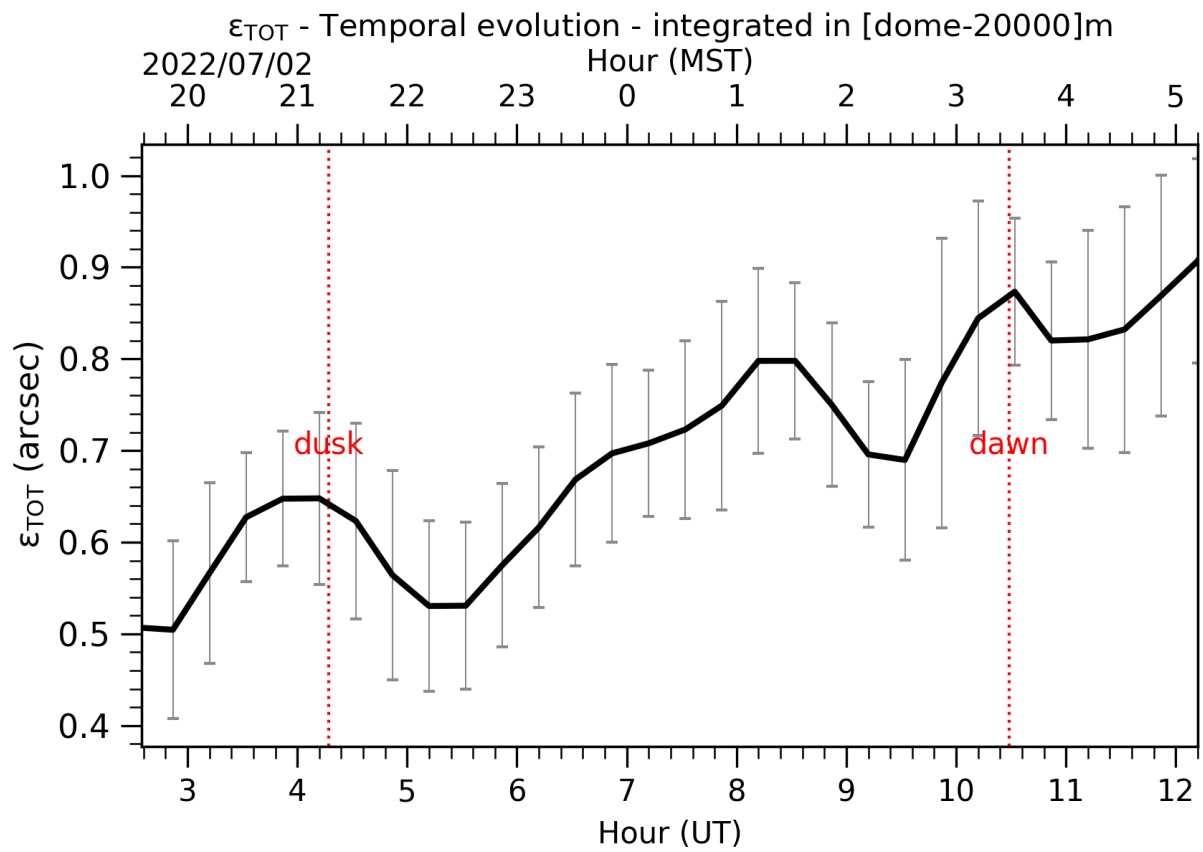
- Start with MODS-Bino, hope for the best

Summary:



Issues:

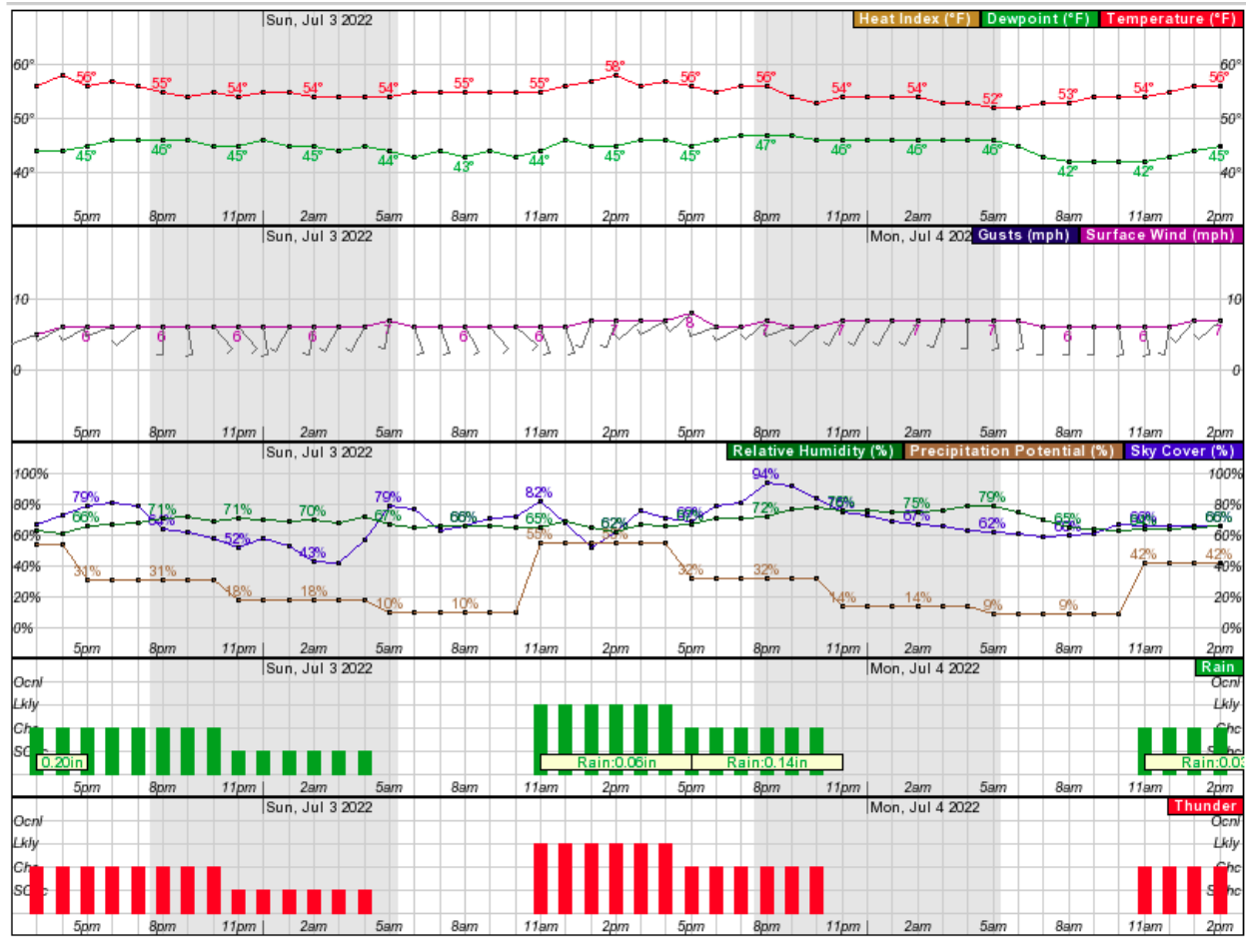
Weather:

Predicted Seeing from ALTA:



NOAA Forecast:

This Afternoon	Tonight
 50%	 30%
Chance T-storms	Chance T-storms

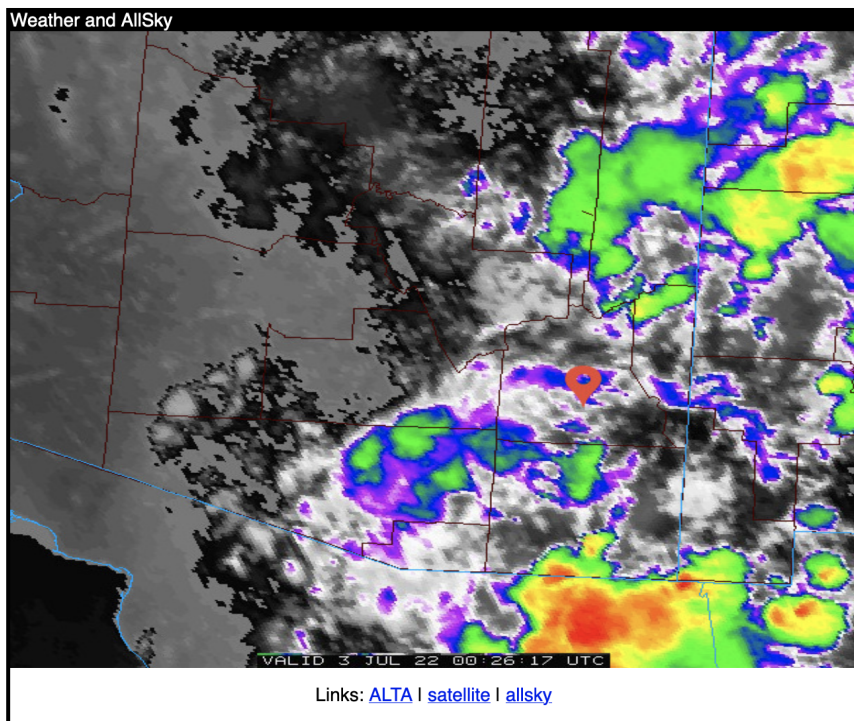


Night/Closed Dome Log (times are given in UT)

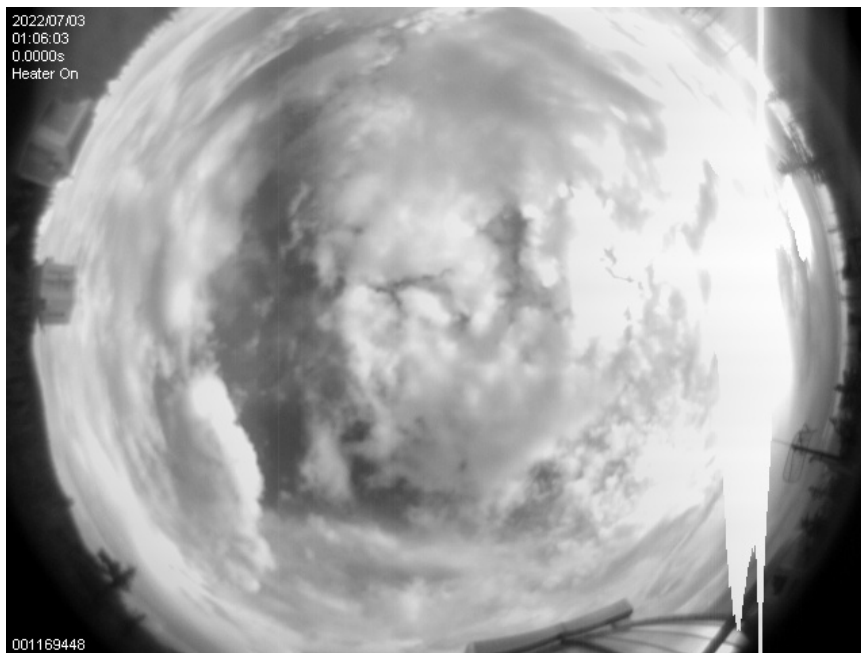
Closed Dome:

- 00:15 - telescope is at horizon due to mitigation of water - will hold off running up instruments and taking test exposures until we are at zenith (not a good idea to move cassettes or get the IMCS started in MODS at horizon) - but bringing up GUIs to be ready
- 00:29 - looks like we're back up to zenith (or close to - will wait a bit just in case...
- 00:47 - waking both MODS
- 00:48 - running simSnap both MODS
- 00:49 - powering on LBCs, init both LUCIs
- 00:50 - test exposures LUCIs - 2.51sec darks
 - L1 0012-0013
 - L2 0012-0013
- 00:53 - simsnap OK for MODS

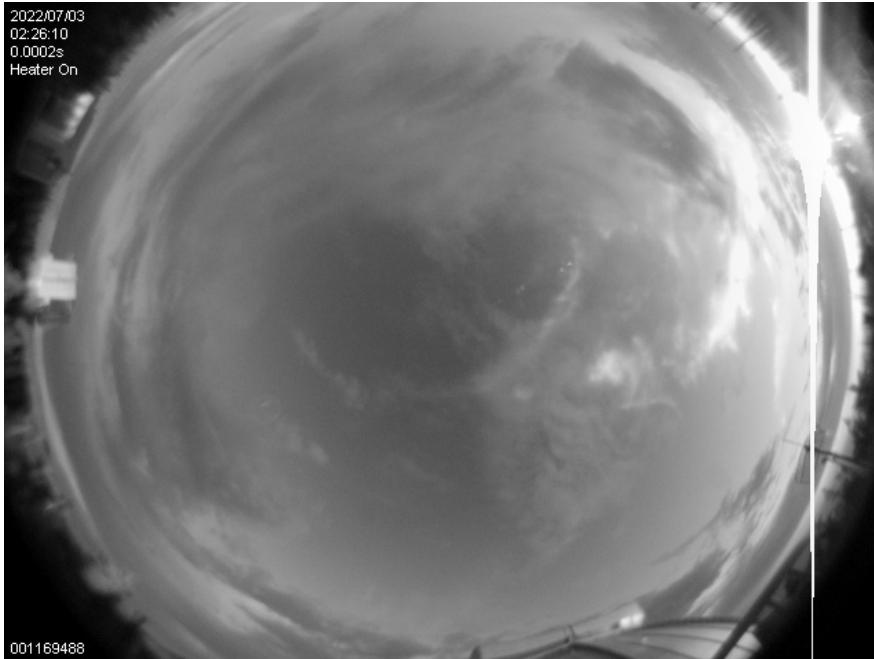
- 00:54 -taking LBC bias test exposures
- Satellite looks...not promising



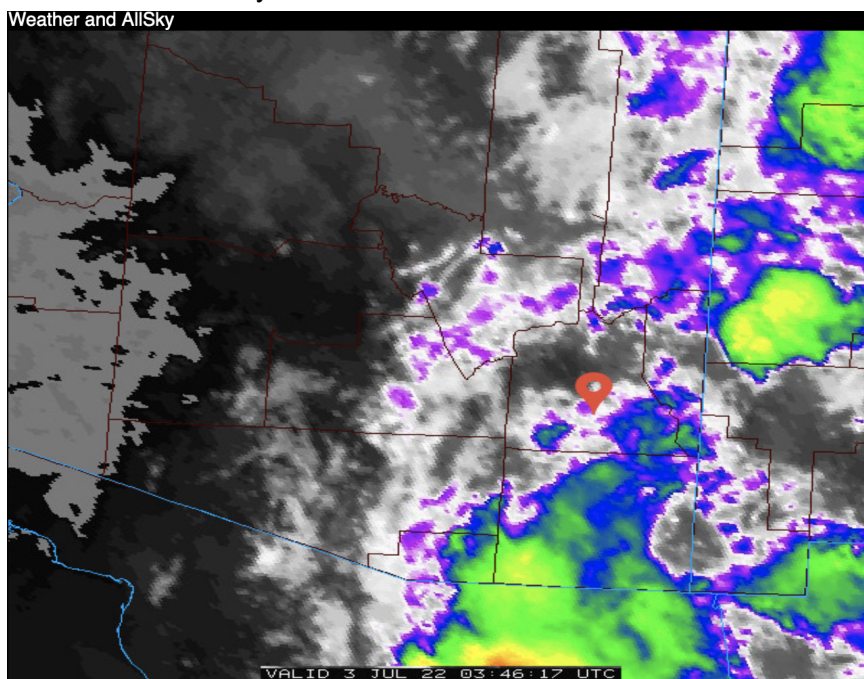
- 00:55 - LBC biases more or less OK - standard bit of noise seen
- 01:09 - current all-sky



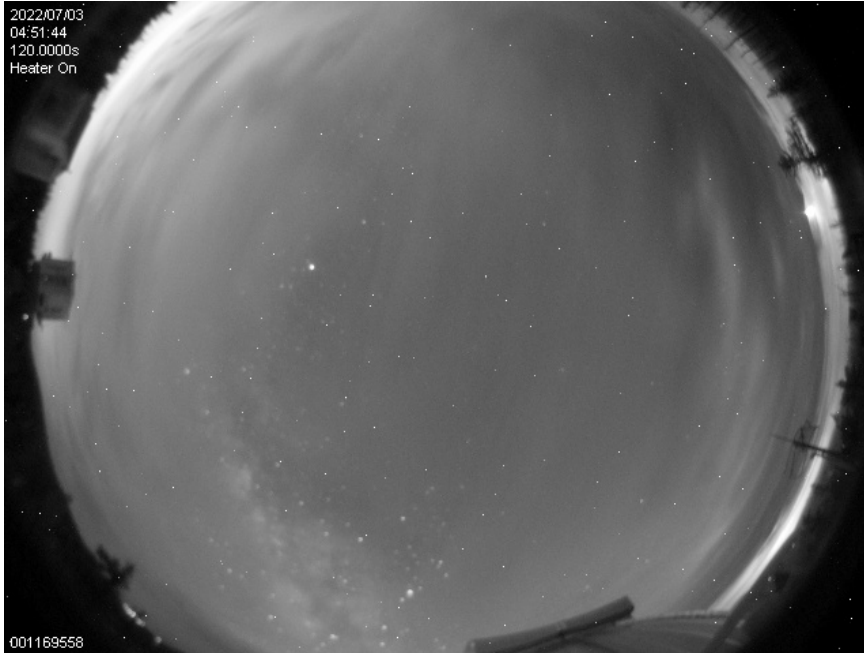
- 02:16 - MODS in observing mode, D.G.Huerta running test preset
- 02:17 - preset OK - closing hatch - now just waiting....
- 02:30 - humidity 77% clouds overhead



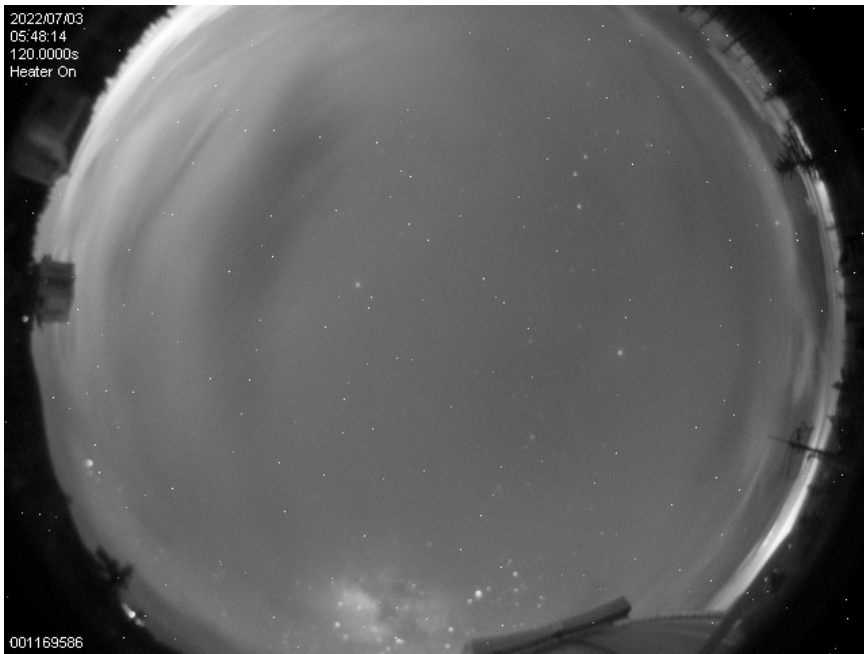
-
- Staying closed at sunset for clouds
- 03:18 - clouds thickening but humidity has dropped to ~66%
- 04:01 - clouds thick overhead - satellite shows stuff coming up from the south moving up over the observatory



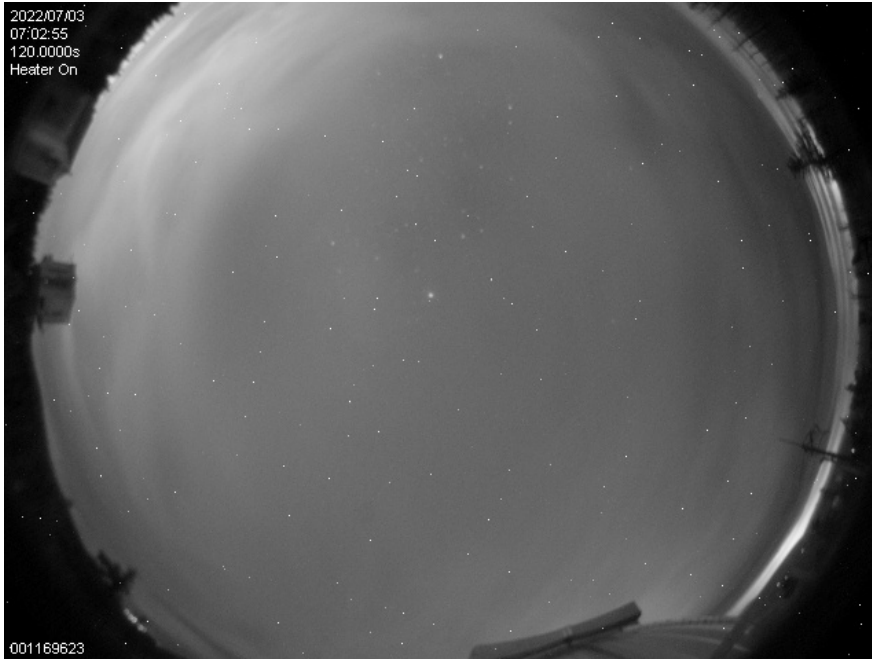
-
- 04:56 - can see the MW - but still some dark clouds



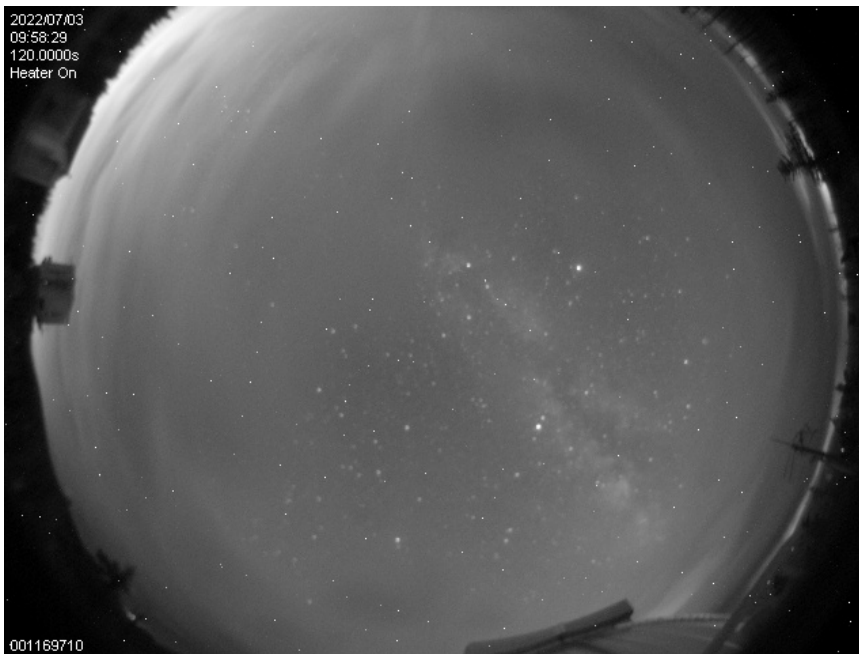
-
- 05:52 - clouds did seem to thin out a bit - but humidity stayed around 80% - now its thickened back up

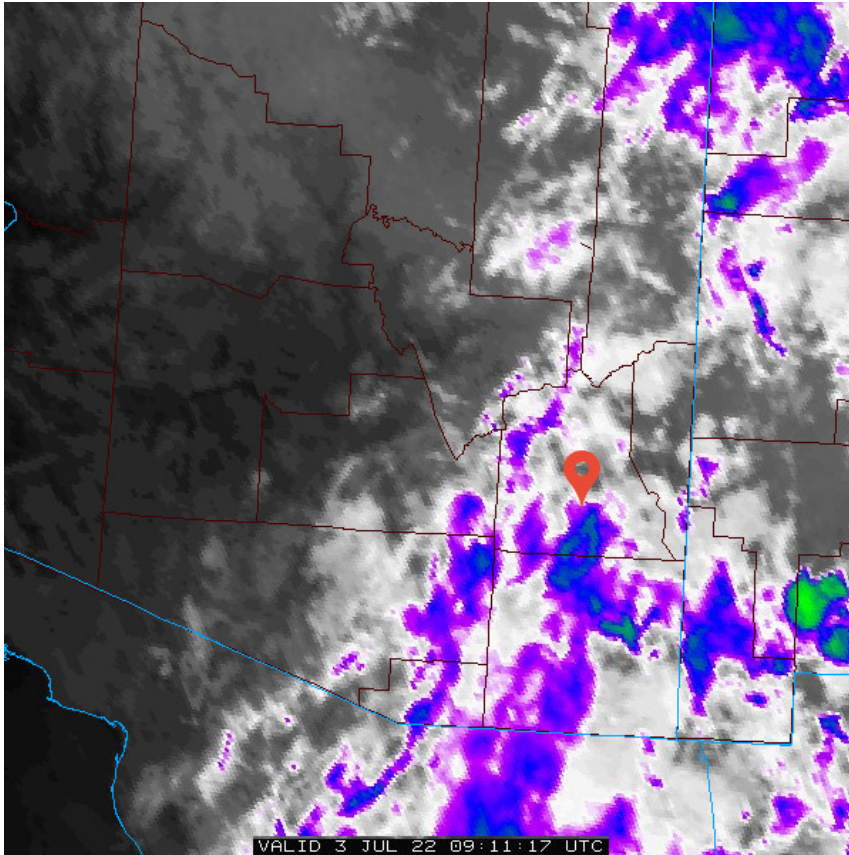


-
- 07:06 - thick clouds - humidity 73%



- 08:02 - allsky pretty much looks like above minus the star - humidity 71%
- 09:02 - allsky looks similar to above - maybe one star visible - humidity 73%
- 10:02 - allsky a bit better but rain shows south of Wilcox





-
- 10:04 - powering off LBCs, putting MODS to sleep
- 10:07 - LUCI GUIs closed out, logging out of OBS2 and OBS5

On-sky:

No chance to open

Calibrations:

None