

C19 Observer: Andrew Cardwell (From obs1, x2go session 51)

Partner Observer(s): Peter Garnavich, Subhash Bose.

Telescope Operator: Josh Williams

Plan: Weather permitting we start with PEPSI and switch to LUCI later for AO obs.

Summary:

No observing due to high humidity and ice. LUCI Calibrations

Issues:

Overview (times are given in UT):

22:00 Daily telescope planning meeting.

00:00 Work on the SX M1 is ongoing. LUCI interface is up.

00:10 Humidity has risen rapidly and is just below the shutdown limit, 93%.

00:15 Taking PEPSI cals.

00:18 Issue resolved.

00:22 94.4% humidity. We can't open until it drops to 90% and appears to be stable. Temperatures have also dropped rapidly, external temp is now -9.2C. Mirrors are just warmer than -1.7C on SX and -2C on DX.

00:29 96.2%, mist/fog at the level of the telescope. We may be starting to build up ice.

00:31 Josh has checked outside, we have light snow / ice fall. It is triggering the particle monitor.

00:50 Current summit conditions:



00:52 Enclosure lights are off. Taking LUCI darks for ND_j0053ir2.
luci[1|2].20230207.0001-0024.

01:01 Sunset. Remaining closed due to high humidity and precipitation.

01:13 Taking LUCI darks for UVa_nirjets_AO. Luci[1|2].20230207.0025-0034.

01:44 -9.7C, 94% humidity.

01:51 12 degree twilight.

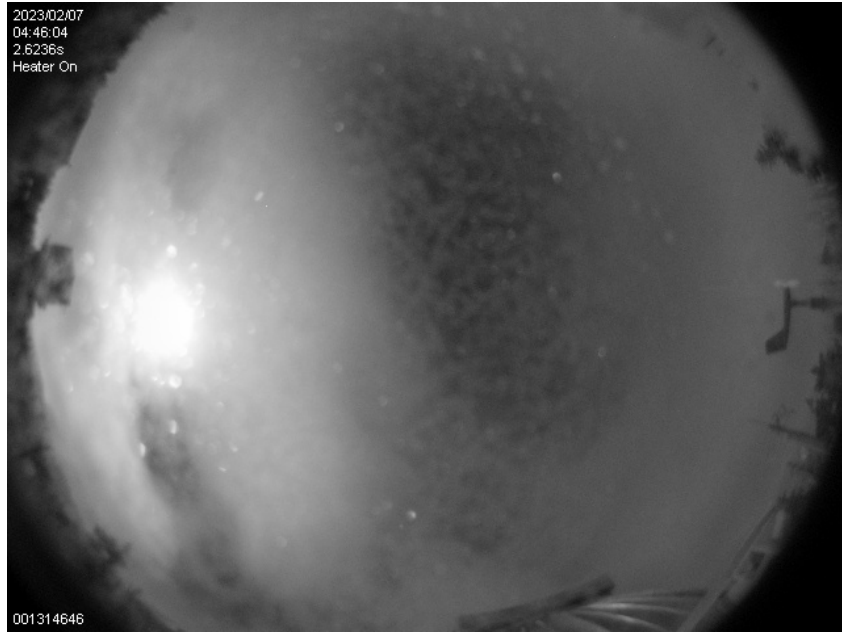
02:20 18 degree twilight.

02:59 No change in conditions. Snow / ice continues to build up on the edge of the allsky camera.

03:13 Taking flats and arcs for UVa_BCD. Luci[1|2].20230207.0035-0057.

03:19 LUCI1 MOS error moving from blind to 1", LUCI2 error setting frating position. The latter was easily resolved, the former will take some investigation.

03:41 Nope, it was actually a luci1 camera unit issue, which is much easier to resolve. Fixed and progressing.



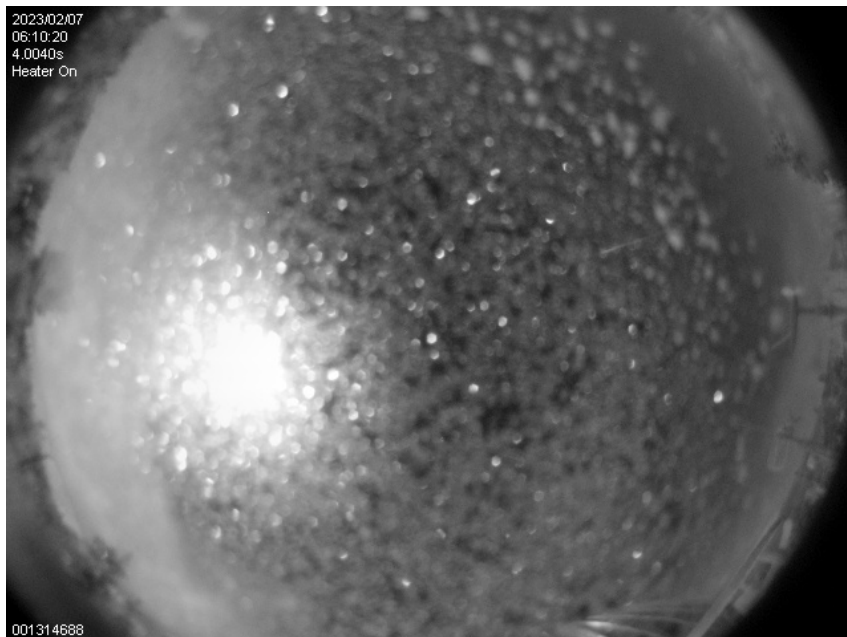
04:49 Oh dear...

04:55 Taking flats and arcs for ND_j0053ir2. Luci[1|2].20230207.0058-0105.

05:39 -10.8C, 93% humidity. It's icy up there...

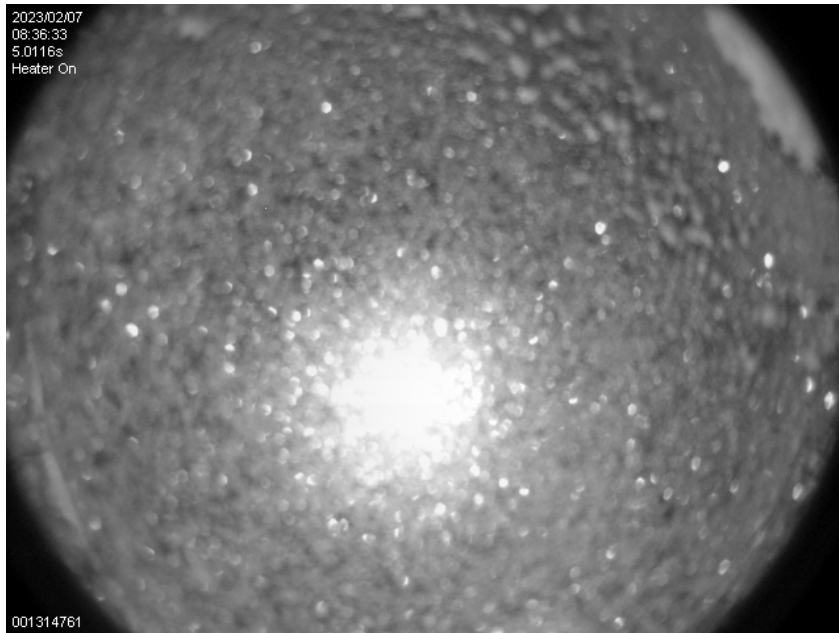
06:08 Starting N30 LUCI1 flats for UVa_nirjets_AO. luci1.0106-0135.

06:12 We have called the night. We have built up enough ice on the enclosure that we can not open tonight.



06:27 LUCIs have been safed.

08:38 -12.4C, 92% humidity.



12:47 18 degree twilight.

13:16 12 degree twilight.

14:06 Sunrise.