

C19 Observer: Andrew Cardwell (From obs1, x2go session 51)  
Partner Observer(s): Mark Whittle (UV, remote)  
Telescope Operator: Steve Allanson

### Plan:

We begin with PEPsi PFU. A full set of MODS DG cals were taken last night. Conditions are clouds, with a high probability of rain. The satellite images strongly suggest that cloud will be an issue all night, although we may catch a break for the first hour of the night.

PEPSi: Choose brighter targets.

OSU\_FGKBDS\_VV478 (7 mag) 10 mins

OSU\_BHB\_J1947 10 mins

OSU\_BHB\_J2028 5 mins

If clear then:

UM\_58Aql 20 mins

UM\_V1405Cas 1.2 hours (check with 1 min exposure first).

Reality: lost first half of night. Began clearing at UT 8, but cloud still possible, so stay with PEPsi and shift to later targets: OSU\_FGK\_VHN (6 mag); OSU\_BHB\_0749; OSU\_BHB\_0139; OSU\_FGK\_CD24;

Reality: although skycam showed intermittent clear patches from about midnight onwards, there was too much activity in the area and it was unsafe to open the dome.

### Observed and completed:

None

### Summary:

No observing due to light rain and clouds all night.

### Issues:

### Overview (times are given in UT):

23:55 Bringing up MODS.

23:59 MODS are awake.

00:04 Powering up LBCs. TMS reference from last night has been copied over.

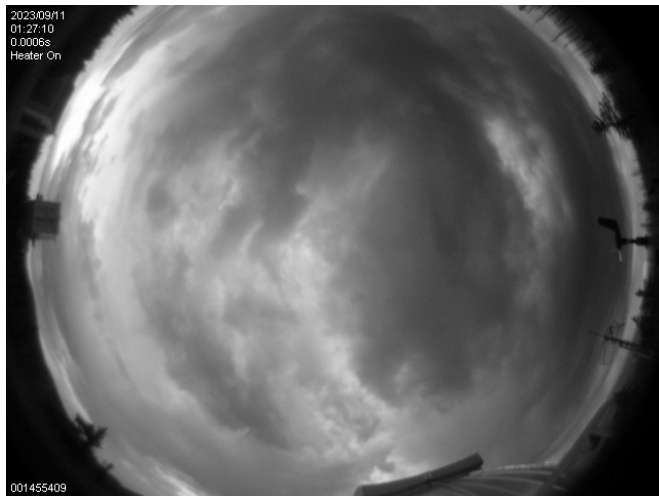
00:28 Steve is cycling the LBCs due to a tracker failure on LBCB.

01:24 Taking simSnap on MODS. Sky is 100% clouded out. 2 Bias Bino checkout on LBCs.

01:27 The first LBCR bias was very ugly, the second near normal. Taking a full LBC bias sequence.

01:29 simSnap looks fine. Taking MODS bias sequence.

01:30 We will not be opening at sunset.



01:39 Sunset

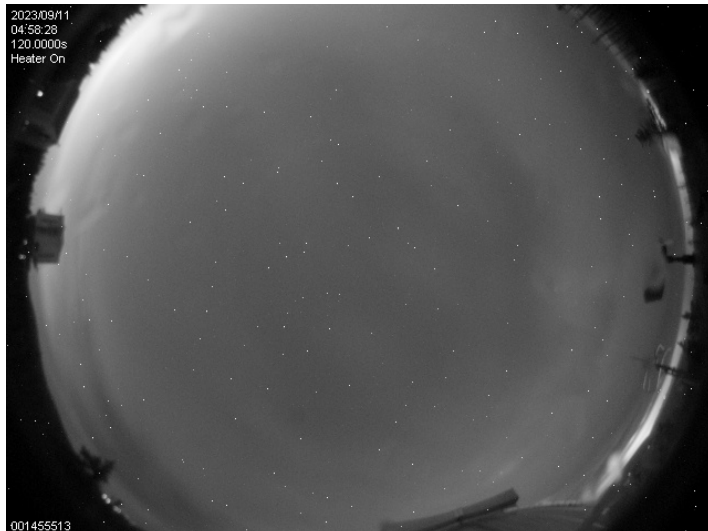
01:58 It is currently raining on the summit.

02:28 12 degree twilight.

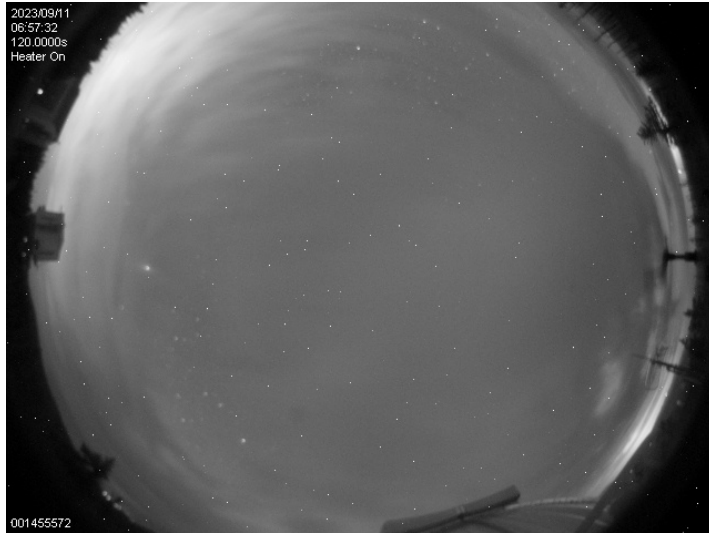
02:58 18 degree twilight.

03:16 Clouds persist. They are currently a little patchier, but with the threat of rain it is not safe to open. The satellite animation shows thick clouds, and likely more rain, about an hour away.

05:04 Still cloudy.



07:03 Cloudy.



07:44 We have a promising looking gap in the clouds and are waiting to see if it is stable. Steve reports the enclosure has dried off.

09:13 Conditions were not stable, we have not yet opened. We continue to monitor the situation.

10:21 Still cloudy. The clouds appear to be generating as they hit the mountains.

11:36 18 degree twilight.

11:51 We are calling the night. Even if we could open right now we wouldn't be on a source until after 12 degree twilight. MODS have been put to sleep, LBCs are powered off. End of night.

12:06 12 degree twilight.

12:55 Sunrise.