

LBT Observing Log: 2025 05 31 UT

Observers: Jason Chu

Partner Observer: Yifan Zhou, Sarah Taft, Mark Whittle

Telescope Operator: Josh Williams

Plan:

Starting off with MODS tonight, possibly switch to LBC if no clouds, or PEPSI if clouds get worse.

GD 153 (dual grating and 1x2 binning for ND_arsco).

ND_Bluegals J1145+6206

ND_Bluegals J1307+0044

ND_arsco AR Sco

UVa_BCD J1613+3622

Change to Pepsi, because of clouds

ND_M3Cluster NGC5272_998: skipping, too cloudy

UM_TCrB HR5501

UM_TCrB TCrB

Summary:

Night lost to clouds, only a flux star through clouds (GD153)

Issues:

Weather:

The night started off with clear skies but the clouds quickly came in a little after 12 deg. Thick cloud blanket was present for

Overview (times are given in UT):

02:22 UT Opening shutters

02:27 UT Sunset

02:43 UT Sending pointing preset

02:48 UT Collimation preset

MODS

Gd153

03:00 UT Acquiring, GCSGUI reporting 0.9" (DIMM is out)

03:10 UT Taking data, dual grating 1x1 and 1x2 binning

03:24 UT: 12 degree twilight

03:45 UT Clouds don't look promising, so we are preemptively switching to PEPSI

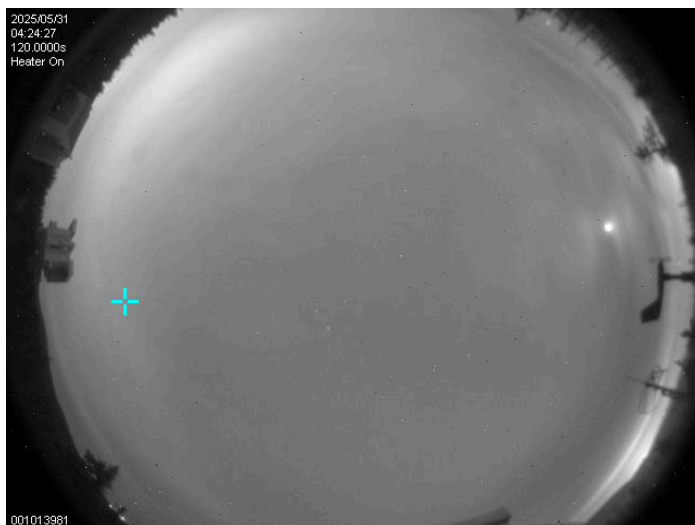
PEPSI

~~ND_M3: NGC 5272 998~~

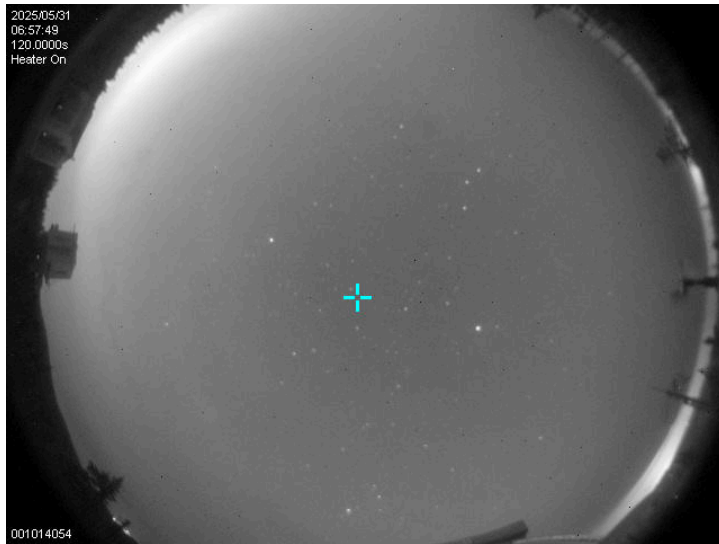
04:01 UT Pointing preset

04:16 UT We couldn't find the target, going to a bright star for pointing check. We found the star and confirmed clouds are really thick.

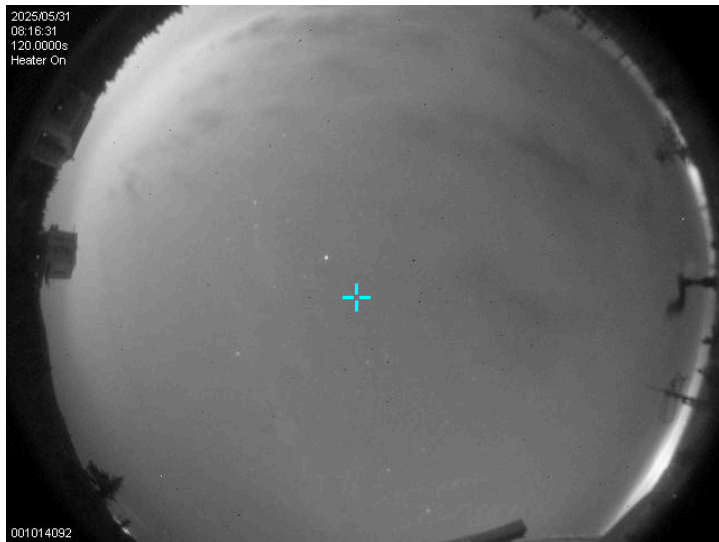
04:26 UT Josh is closing due to clouds.



07:03 UT Clouds look marginally better but still hanging around the mountain...



08:20 UT Clouds got thicker again



10:12 UT Josh is calling it, clouds have been too stubborn to move off.

11:10 UT: 12 degree twilight

12:07 UT Sunrise