

# LBT Observing Log: 2026 May 03 UT

Observers: Justin Rupert  
Partner Observer: Tawny Sit  
Telescope Operator: Gil Esquerdo

## Plan:

PEPSI all night.

OSU\_NGC2420/865401790923940224  
OSU\_PANTERA/744784953040324864  
OSU\_PANTERA/647383581622234496  
OSU\_PANTERA/3981490689765823744  
OSU\_MWABundDisp/2MJ1515+4505  
OSU\_PANTERA/1373298170645854208

ND\_v795her/V795Her  
OSU\_PANTERA/4596318389222965504  
UVa\_metalpoor/1299295300021645824  
UVa\_metalpoor/HIP91659  
UVa\_metalpoor/4495477676716051712  
OSU\_LBOISpec/TOI5789  
OSU\_LBOISpec/HD189733  
OSU\_PANTERA/1407436666658919296

## Summary:

### OSU

#### NGC2420

[GDR3 865401790923940224 \(UT 03:00-04:05\)](#)

#### Pantera

[GDR3 744784953040324864 \(UT 04:05-04:34\)](#)

[GDR3 647383581622234496 \(UT 04:34-05:05\)](#)

[GDR3 3981490689765823744 \(UT 05:05-\)](#)

#### MWABund

[2Mas J15150078+4505238 \(UT 05:29-05:44\)](#)

#### Pantera

[GDR3 13373298170645854208 \(UT 05:44-06:16\)](#)

### UVa

#### Metalpoor

[GDR3 1299295300021645824 \(UT 06:20-06:26\)](#)

[V795Her](#)

[V795 Her \(08:31-09:37\)](#)

[OSU](#)

[Pantera](#)

[GDR3 4596318389222965504 \(UT 09:37-10:09\)](#)

[UVa](#)

[Metalpoor](#)

[GDR3 1299295300021645824 \(UT 10:09-10:23\)](#)

[HIP 91659 \(UT 10:23-10:28\)](#)

[GDR3 4495477676716051712 \(UT 10:28-\)](#)

[OSU](#)

[LBTOISpec](#)

[TOI-5789 \(UT 10:35-10:50\)](#)

[HD 189733 \(UT 10:50-11:06\)](#)

[Pantera](#)

[GDR3 1407436666658919296 \(UT 11:06-11:21\)](#)

PEPSI Log:

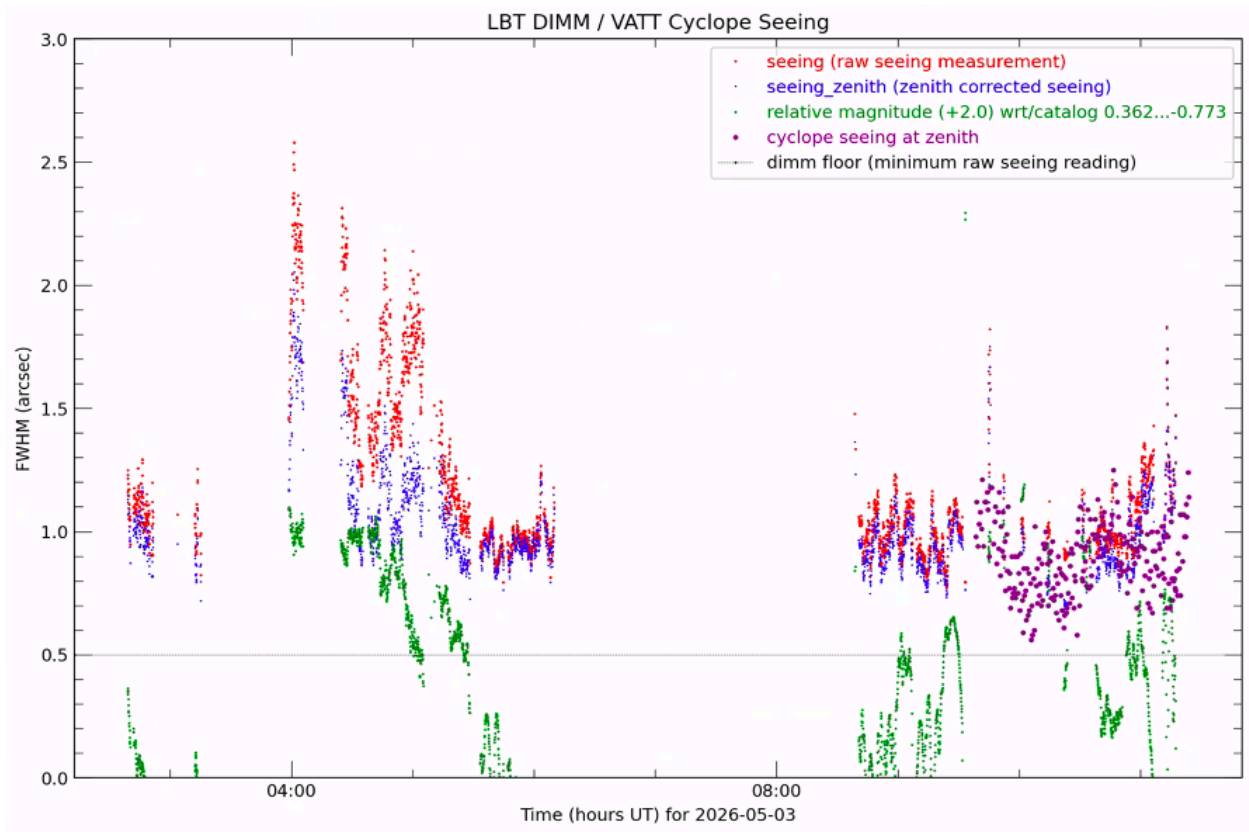
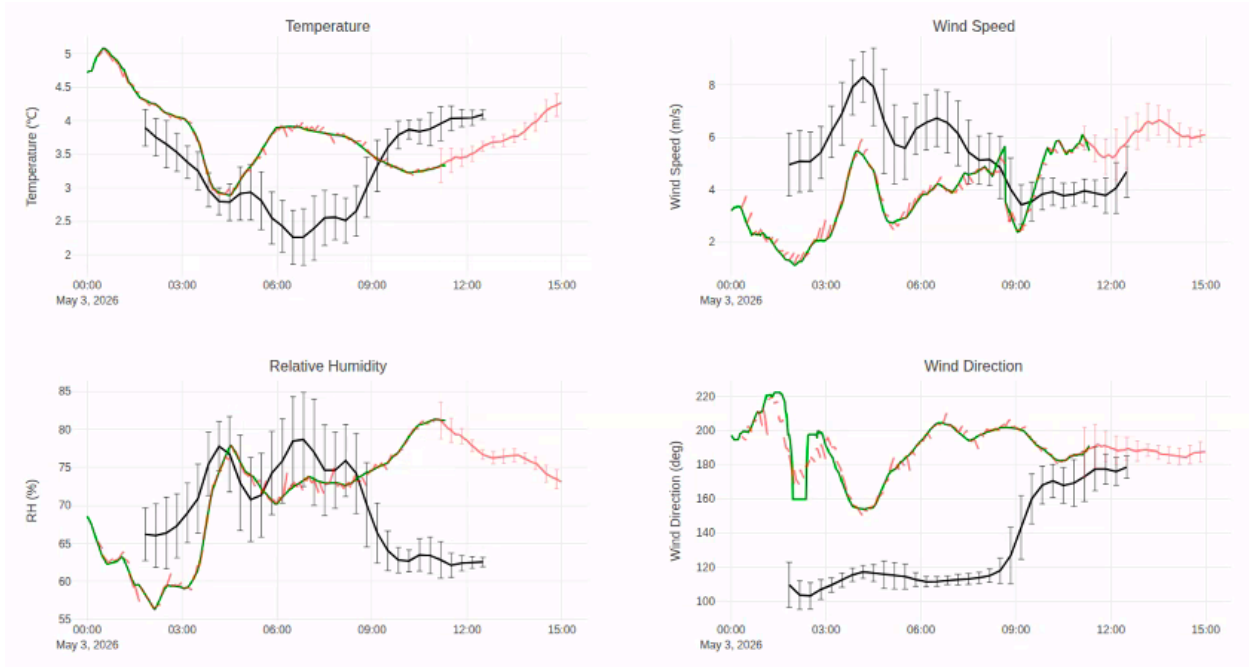
<https://drive.google.com/file/d/15KgcpdsXWKvgAzb41pOY55tIXeGn1kWS/view?usp=sharing>

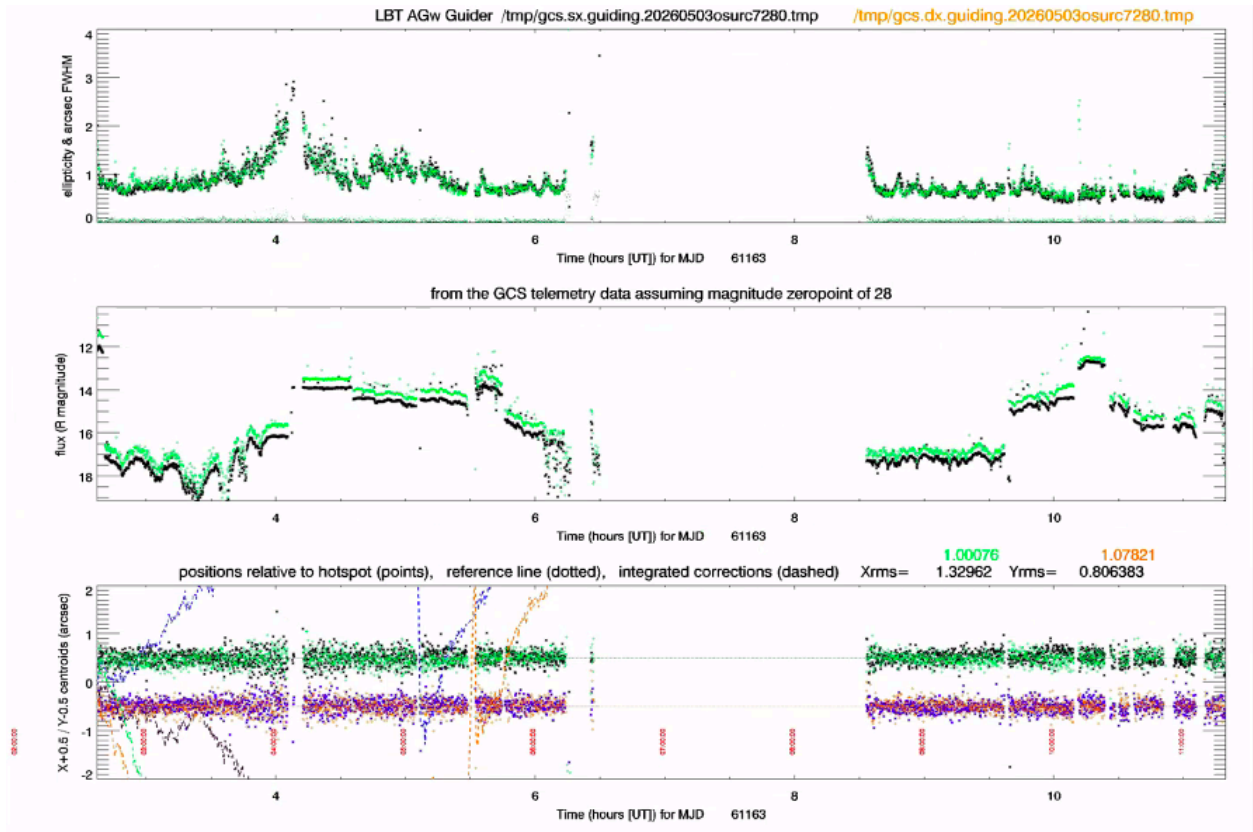
## Issues:

SX Guider stopped updating after acquisition.

## Weather:

Clouds were a factor all night. They shut us down for a couple hours in the middle of the night.





## Overview:

02:04 UT Gil is opening shutter doors.

02:29 UT Pointing check.

02:37 UT Collimation check.

02:40 UT Preset to first target. We'll wait for 12-degree to start science.

## OSU

### NGC2420

GDR3 865401790923940224 (UT 03:00-04:05)

03:00 UT 12-degree twilight, Starting science. Seeing is 0.73" on SX guider, 0.76" on DX guider. Thin cloud coverage.

03:24 UT We've lost an additional 1.5 mag over the last few minutes.

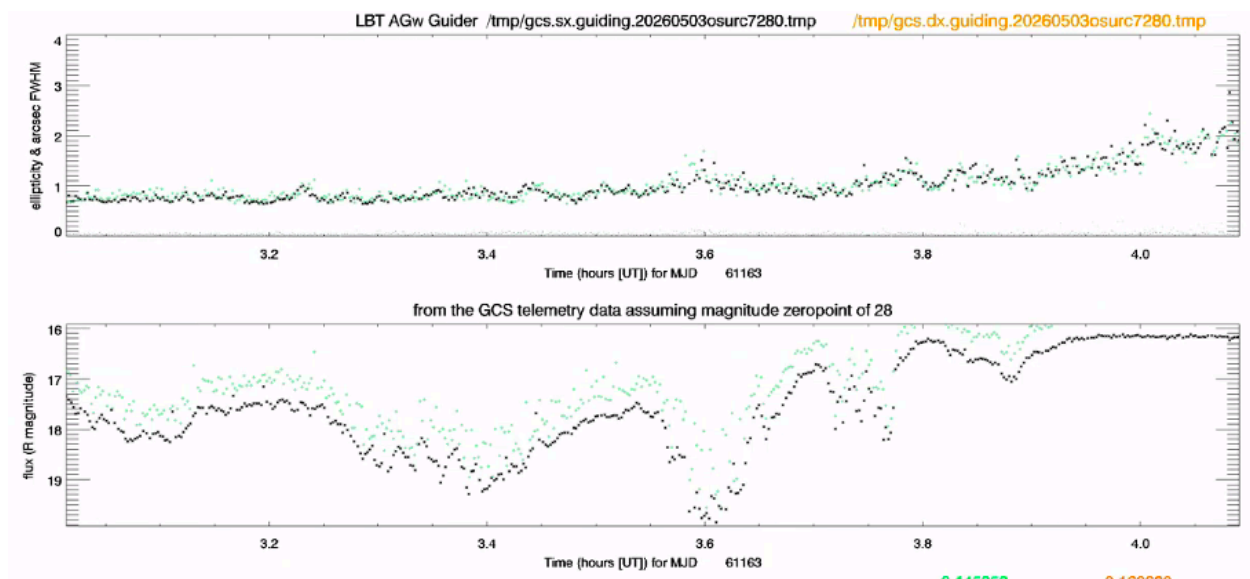
03:33 UT 18-degree twilight

03:48 UT SNR: CD1 41, CD5 157. Going to do another 15-minute exposure to get more signal out of CD1 (goal is 70).

04:00 UT Seeing is 1.48" on SX guider, 1.46" on DX guider. Clear skies where we're pointed.

04:03 UT Seeing is 1.83" on SX guider, 1.84" on DX guider. Humidity is climbing as well.

04:05 UT SNR: CD1 42, CD5 149.



## Pantera

GDR3 744784953040324864 (UT 04:05-04:34)

04:05 UT Preset.

04:07 UT Didn't get it on DX. Pointing check.

04:11 UT Resending preset. RH is 86.7%.

04:13 UT Starting science. Seeing is 2.16" on SX guider, 1.92" on DX guider. Clear skies.

04:17 UT SNR: CD3 46, CD5 76. Seeing is 1.33" on SX guider, 1.41" on DX guider.

04:23 UT Repeating CD3/5 pair. SNR: CD2 50, CD4 98. We'll repeat this one as well (goal is 75).

04:27 UT SNR: CD3 50, CD5 83.

04:30 UT Seeing is 1.02" on SX guider, 0.98" on DX guider. RH 73.6%.

04:34 UT SNR: CD2 57, CD4 124.

GDR3 647383581622234496 (UT 04:34-05:05)

04:34 UT Preset.

04:36 UT Starting science. Seeing is 0.97" on SX guider, 0.99" on DX guider. Clear skies. Increasing exptime to 486s (CD3/5) and 1109s (CD2/4).

04:45 UT SNR: CD3 100, CD5 135.

05:05 UT SNR: CD2 85, CD4 158.

GDR3 3981490689765823744 (UT 05:05-)

05:05 UT Preset.

05:07 UT Starting science. Seeing is 1.09" on SX guider, 1.07" on DX guider. Thin cirrus with more on the way. Increased exptime to 357s (CD3/5) and 761s (CD2/4).

05:14 UT CD3 70, CD5 113.

05:22 UT Seeing is 0.79" on SX guider, 0.75" on DX guider.

05:28 UT SNR: CD2 72, CD4 157.

MWABund

2Mas J15150078+4505238 (UT 05:29-05:44)

05:29 UT Preset.

05:33 UT Starting science. Seeing is 0.55" on SX guider, 0.59" on DX guider. Cirrus above with thicker stuff on the way. Doubled exptime from 7.5 to 15 minutes to compensate for that.

05:43 UT Reading out after 10 minutes.

05:44 SNR: CD2 181, CD4 374

## Pantera

~~GDR3 13373298170645854208 (UT 05:44-06:16)~~

05:44 UT Preset.

05:46 UT Starting science. Seeing is 0.76" on SX guider, 0.73" on DX guider, Medium-thick clouds above with thicker stuff on the way. Increasing exptime to 407s (CD3/5) and 1003s (CD2/4).

05:55 UT SNR: CD3 54, CD5 88. Will have to repeat.

06:12 UT SNR: CD2 46, CD4 81. Going to repeat both CD pairs. Thicker clouds are here.

06:14 UT Losing the target on the guiders.

06:16 UT Aborting script. Clouds are too thick now.

## UVa

### Metalpoor

~~GDR3 1299295300021645824 (UT 06:20-06:26)~~

06:20 UT Preset. AZ unwrap.

06:26 UT Starting science. Aaand we lost it. This is the brightest target we have. We'll wait.

### V795Her

V795 Her (08:31-09:37)

08:31 UT Preset.

08:34 UT Starting science. Medium thin clouds above us.

08:45 UT First CD4 exposure SNR is 72.

08:49 UT Seeing is 0.77" on SX guider, 0.71" on DX guider.

08:55 UT SNR: CD2 59, CD4 82.

09:06 UT CD4 SNR 82.

09:20 UT SNR: CD1 63, CD4 80.

09:26 UT CD4 SNR 83.

09:35 UT SNR: CD1 63, 81.

## OSU

### Pantera

GDR3 4596318389222965504 (UT 09:37-10:09)

09:37 UT Preset.

09:40 UT Starting science. Seeing is 0.61" on SX guider, 0.59" on DX guider. Thin clouds. Increased exptime to 479s (CD3/5) and 1092s (CD2/4).

09:51 UT SNR: CD3 78, CD5 123.

10:09 UT SNR: CD2 90, CD4 204.

## UVa

### Metalpoor

GDR3 1299295300021645824 (UT 10:09-10:23)

10:09 UT Preset.

10:12 UT Starting science. Thin clouds. Seeing is 0.50" on SX guider, 0.52" on DX guider.

10:22 UT Slightly thicker clouds moving in.

10:23 UT SNR: CD3 242, CD6 355.

HIP 91659 (UT 10:23-10:28)

10:23 UT Preset.

10:26 UT Starting science. Thinnish clouds.

10:28 SNR: CD2 259, CD4 461.

GDR3 4495477676716051712 (UT 10:28-)

10:28 UT Preset.

10:30 UT Starting science. Thin clouds.

10:34 UT SNR: CD2 63, CD4 100.

## OSU

### LBTOISpec

TOI-5789 (UT 10:35-10:50)

10:35 UT Preset.

10:37 UT Starting science. Thin clouds.

10:43 UT SNR: CD2 186, CD6 412.

10:46 UT SNR: CD3 275, CD5 399.

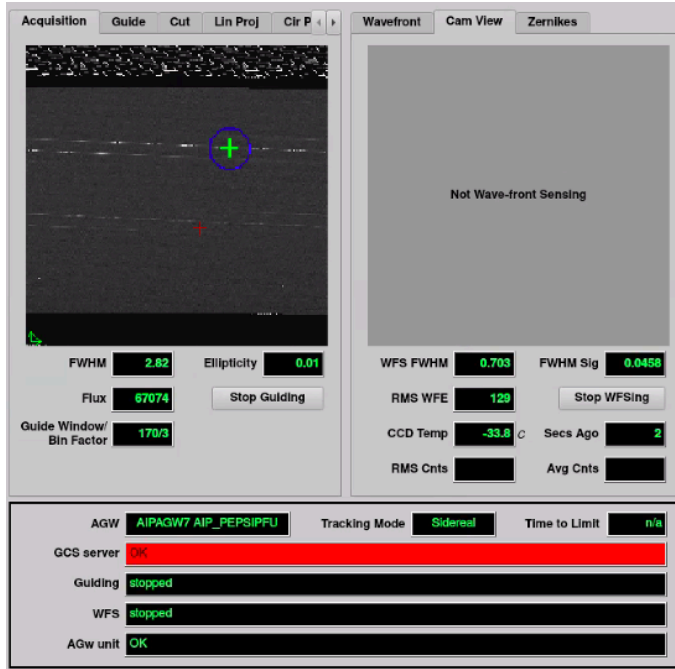
10:48 UT Seeing is 0.53" on SX guider, 0.62" on DX guider.

10:50 Preset.

HD 189733 (UT 10:50-11:06)

10:50 UT Preset.

10:52 UT SX Guide camera is in a funny state:



```

Sun May 3 10:51:51.632 2026 gcs.guideLoopError left Guide loop may be hung. Last update was more than 72 seconds ago. Time now is 10:51:51.
Sun May 3 10:51:51.635 2026 gcs.command.resumeGuiding.failed left guiding is not active
Sun May 3 10:51:51.864 2026 iif.command.preset.alert left Preset alert for PEPSIPFU mode ACTIVE: guiding is not active
Sun May 3 10:51:51.881 2026 iif.command.preset.failed left Preset command failed for PEPSIPFU mode ACTIVE with guidestars, Sound=presetFailed.wav

```

10:53 Resent preset on SX. That went through. Resending DX now. For some reason the previous preset (according to facsum) was a track preset...

10:57 UT Starting science. Thin clouds.

11:00 UT 18-degree twilight

11:01 UT SNR: CD2 151, CD6 360. Seeing is 0.83" on SX guider, 0.82" on DX guider.

11:06 UT SNR: CD 3 216, CD5 342.

Pantera

~~GDR3 1407436666658919296 (UT 11:06-11:21)~~

11:06 UT Preset.

11:10 UT Starting science. Thin clouds with thicker stuff in the southern half of the all-sky (we're in the north). Increased exptime to 509s (CD3/5) and 1226s (CD2/4).

11:15 UT Seeing is 0.88" on SX guider, 0.87" on DX guider.

11:19 UT Lost the target on readout.

11:20 UT SNR: CD3 66, CD5 98.

11:21 UT We see droplets on the all-sky. Definitely not in the forecast nor were they on the radar at any point. Closing. Running PEPSI cals.

11:33 UT 12-degree twilight