

# LBT Observing Log: 2026 May 07 UT

Observers: Justin Rupert  
Partner Observer: Peter Garnavich  
Telescope Operator: Steve Allanson

## Plan:

We'll start with MODS.

MODSPhotCal/feige34 late twilight done  
OSU\_SCAT/2023ufxHost\_mono did 1 hour done  
ND\_j1344/j1344 2.25 hr need to start at 4:00UT done  
ND\_cd30-mods/cd30-mods - meridian crossing 7:15UT - needs 26 deg override done

Moonrise 6:50 UT  
Switch to PEPSI

UM\_TCrB/HR5501\_a done  
OSU\_EBRV/V380Dra 05/07/26 08:27 done  
UM\_TCrB/TCrB\_a done

OSU\_LBOISpec/TOI6074 10:00UT done  
UVa\_Snowbird/UHA138 10:30UT done  
OSU\_LAMP/1419893343127804928 1.0hr done  
OSU\_MWAbundDisp/2MJ1634+4210 0.3hr

## Summary:

### Overview:

#### MODS

##### MODS Photcal

Feige34 (UT 02:34-02:56)

##### OSU SCAT

2023ufxHost (UT 02:56-04:21)

##### ND J1344

J1344 (UT 04:23-06:46)

##### ND CD30-mods

CD30 11814 (UT 06:49-07:25)

#### PEPSI

##### UM TCrB

[HR 5501 \(UT 07:44-08:14\)](#)  
[OSU EBRV](#)  
[V308Dra \(UT 08:14-\)](#)  
[UM TCrB](#)  
[TCrB \(UT 08:29-\)](#)  
[OSU LBOISpec](#)  
[TOI-6074 \(UT 09:41-10:00\)](#)  
[UVa Snowbird](#)  
[EM\\* UHA 138 \(UT 10:00-10:26\)](#)  
[OSU LAMP](#)  
[GDR3 1419893343127804928 \(UT 10:40-11:35\)](#)  
[OSU MWAbund](#)  
[2MJ16342702+4210271 \(UT 11:35-11:54\)](#)

PEPSI Log:

[https://drive.google.com/file/d/1TvQOsb\\_e4LKGwdF9a7u\\_aH4P0Q2Jw\\_xD/view?usp=sharing](https://drive.google.com/file/d/1TvQOsb_e4LKGwdF9a7u_aH4P0Q2Jw_xD/view?usp=sharing)

## Issues:

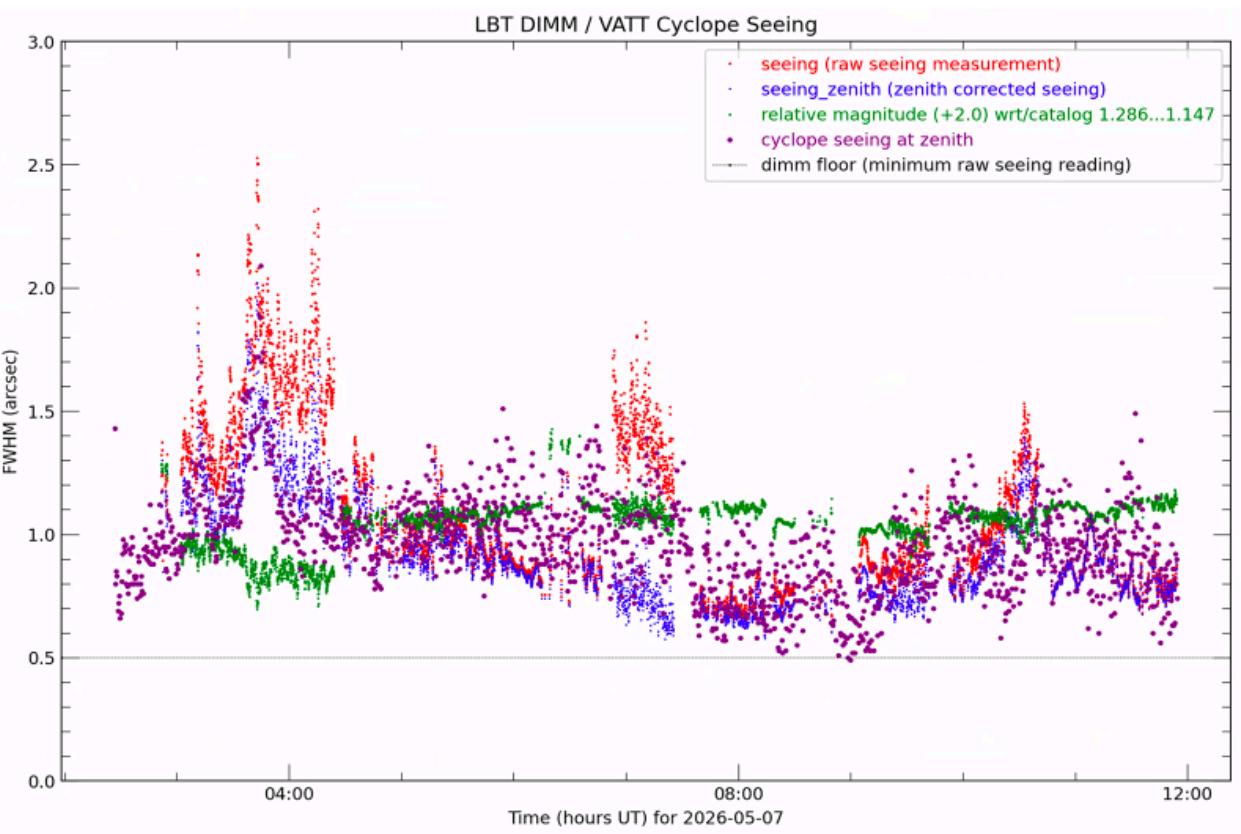
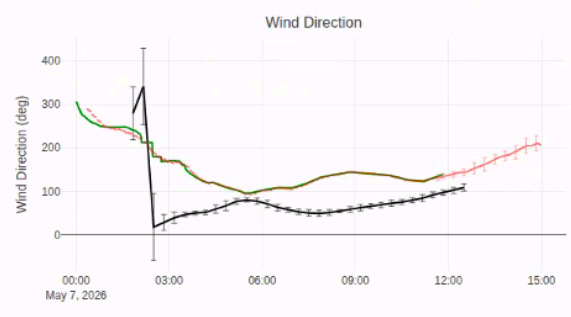
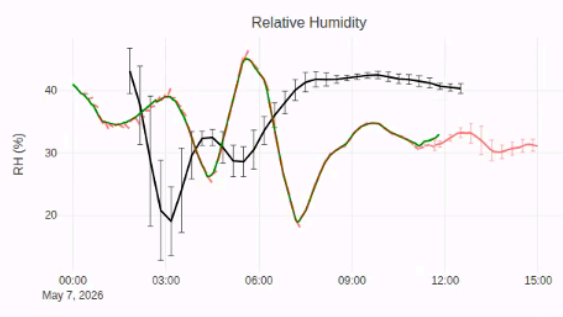
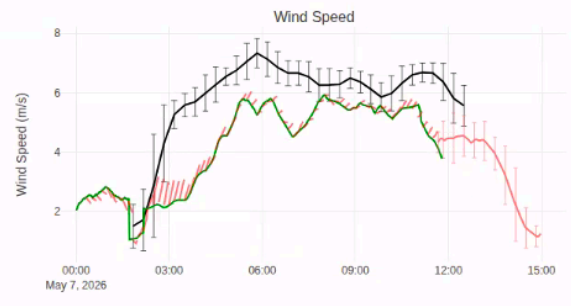
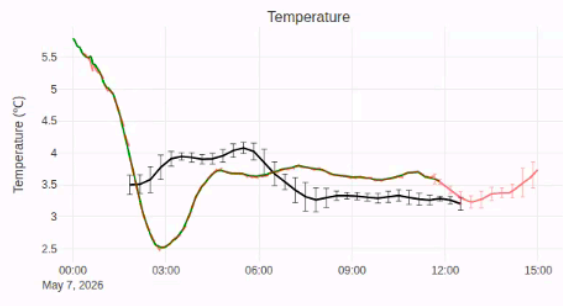
MODS1B got stuck at 100% readout.

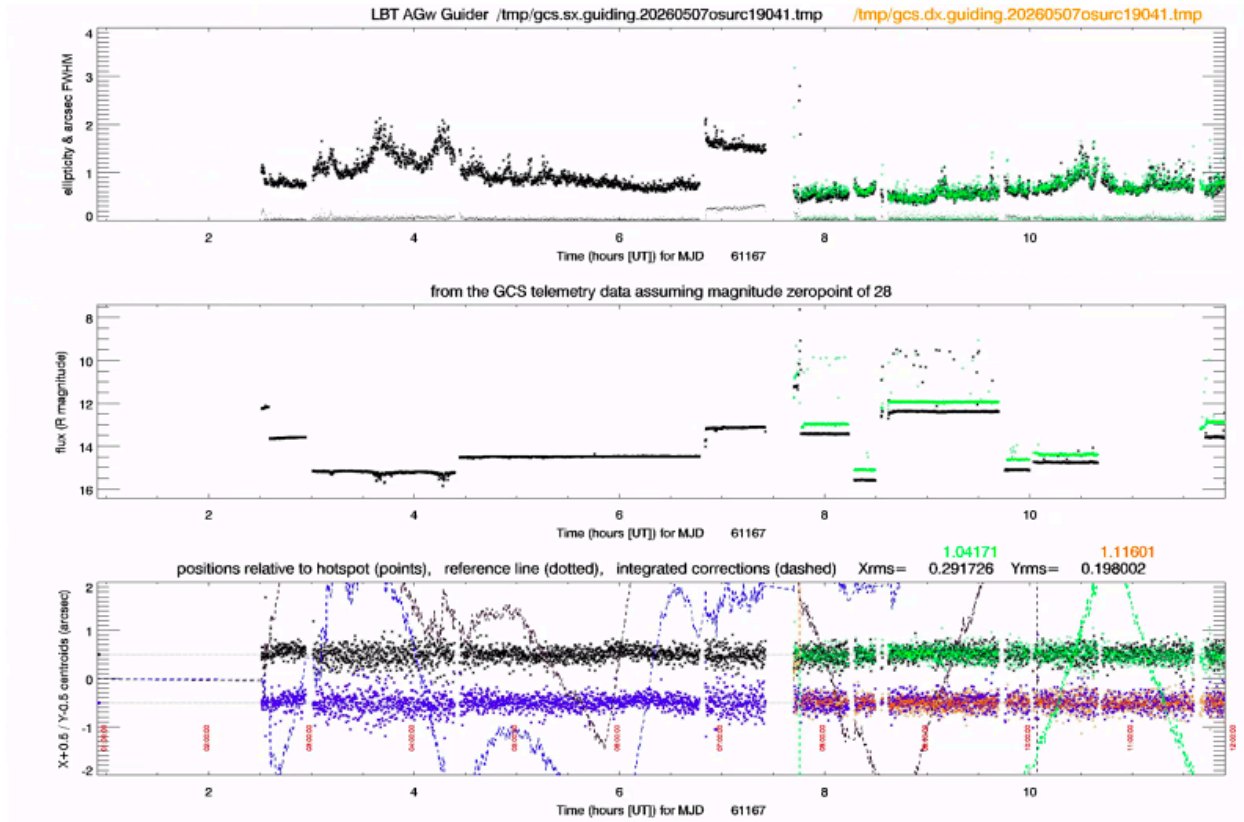
There was a timeout on PEPSI SX switching from ND2 to ND0.

GCS got stuck at the end of the night at various steps in the guiding/WFSing process when moving to the final target.

## Weather:

Clear skies all night!





## Overview:

01:10 UT Waking MODS1.

01:11 UT Initializing LUCIs.

01:15 UT Running simSnap.

01:59 UT Opening.

02:14 UT Pointing check. Forgot to put MODS in Observing mode.

02:31 UT Collimation check.

## MODS

### MODS Photcal

Feige34 (UT 02:34-02:56)

02:34 UT Preset to Feige 34. We'll align on it and wait to run science exposures until it's darker.

```
Computed Slit Alignment Offset:  
dX = -0.905 arcsec  
dY = 11.236 arcsec  
  
MODS1 Offset Command:  
offsetxy -0.905 11.236 rel
```

02:44 UT Starting science. Seeing is 0.82" on guider, 1.12" on cyclope. Clear skies.

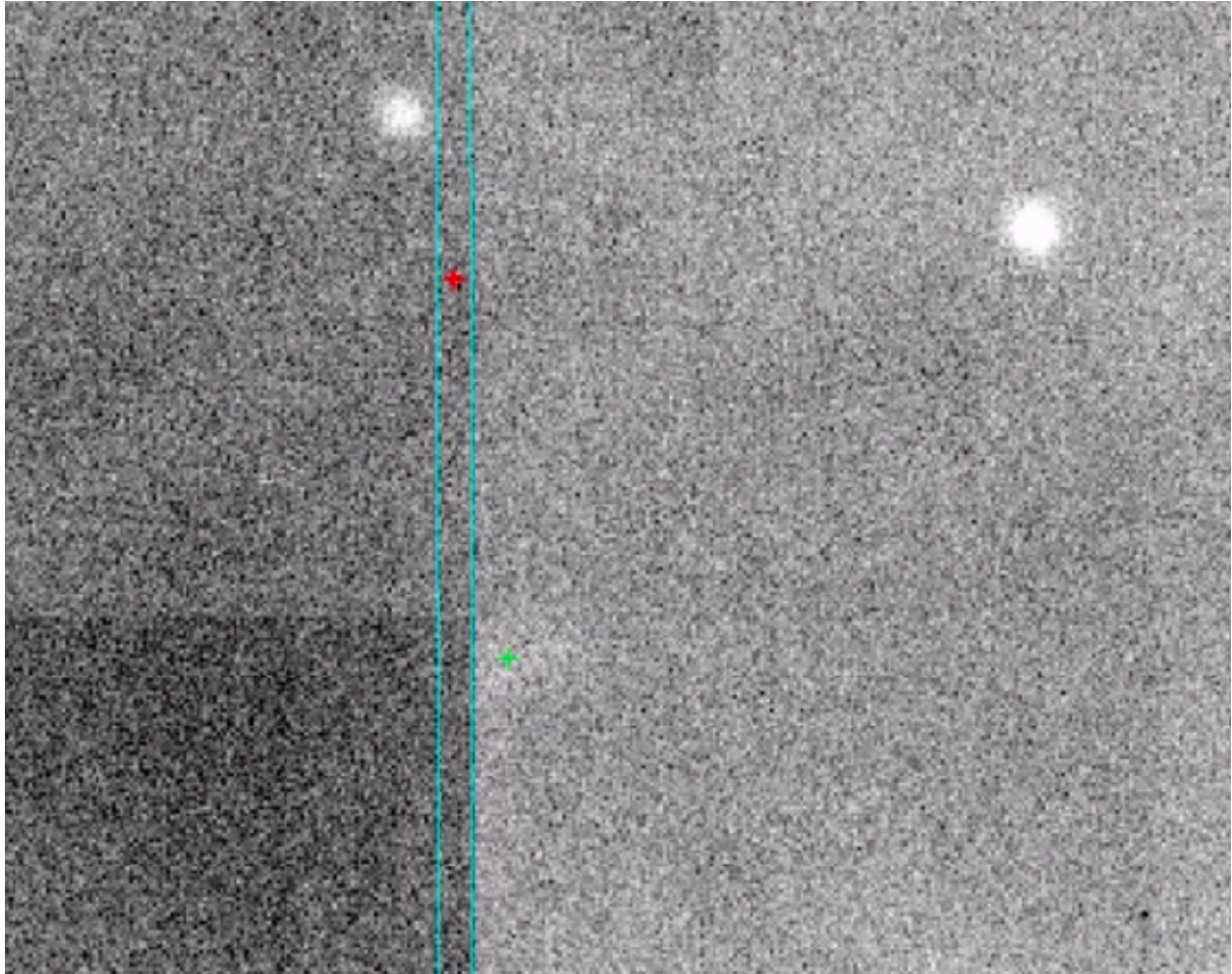
## OSU SCAT

2023ufxHost (UT 02:56-04:21)

02:56 UT Preset. AZ unwrap.

03:04 UT 12-degree twilight

03:09 UT The host galaxy is difficult to see now.



```
Computed Slit Alignment Offset:  
dX = -1.907 arcsec  
dY = 13.564 arcsec  
  
MODS1 Offset Command:  
offsetxy -1.907 13.564 rel
```

03:18 UT After taking a field image to be sure of what we were seeing, we're starting science. Seeing is 1" on guider, 1.09" on DIMM. Clear skies.

03:37 UT 18-degree twilight

03:39 UT Seeing is 1.5" on guider, 1.76" on DIMM.

04:07 UT Seeing is 1.2" on guider, 1.29" on DIMM.

04:16 UT Seeing is 1.6" on guider, 1.14" on DIMM.

Emission lines are very faint! Looks to take more than 6x900s to detect 4363.

04:21 UT Aborting script after four exposures.

## ND J1344

J1344 (UT 04:23-06:46)

04:23 UT Preset.

```
Computed Slit Alignment Offset:  
dX = -0.174 arcsec  
dY = 12.060 arcsec  
  
MODS1 Offset Command:  
offsetxy -0.174 12.060 rel
```

04:35 UT Starting science. Seeing is 1.1" on guider, 1.26" on DIMM. Clear skies.

05:14 UT Seeing is 0.84" on guider, 0.96" on DIMM.

06:46 UT Pointing check before this next, very low target.

## ND CD30-mods

CD30\_11814 (UT 06:49-07:25)

06:49 UT Preset.

06:56 UT Starting science. Seeing is 1.6" on guider, 0.69" on DIMM. Clear skies. We're at z~2.245.

07:11 UT Blue channel was stuck at 100% readout. Commanded a blue expdone. It is now more than two exposures behind red. These are 180-second exposures.

07:16 UT Taking two additional red exposures while blue finishes its original sequence.

## PEPSI

07:25 UT **Reconfiguring to PEPSI.**

07:37 UT Pointing check.

07:43 UT Collimation check.

UM TCrB

HR 5501 (UT 07:44-08:14)

07:44 UT Preset.

07:46 UT Lost it on DX. Putting in ND2 and resending preset.

07:47 UT Starting science. Clear skies.

07:50 UT Seeing is 0.49" on SX guider, 0.58" on DX guider, 0.81" on cyclope.

OSU EBRV

V308Dra (UT 08:14-)

08:14 UT Preset.

08:18 UT Starting science. Clear skies.

08:20 UT Seeing is 0.63" on SX guider, 0.65" on DX guider, 0.69" on DIMM.

08:24 UT SNR: CD3 87, CD5 139. Repeating the exposure.

UM TCrB

TCrB (UT 08:29-)

08:29 UT Preset.

08:33 UT Pointing check.

08:35 UT Back to the target.

08:38 UT Starting science. Clear skies.

09:10 UT SNR: CD2 120, CD4 277. Seeing is 0.70" on SX guider, 0.68" on DX guider, 0.74" on DIMM.

09:31 UT SNR: CD3 228, CD5 461.

09:41 UT SNR: CD1 52, CD6 773.

## OSU LBOISpec

TOI-6074 (UT 09:41-10:00)

09:41 UT Preset.

09:45 UT Just missed it on DX. Steve is nudging.

09:46 UT Resending preset.

09:47 UT Starting science. Clear skies.

09:51 UT SNR: CD2 258, CD6 494.

09:57 UT SNR: CD3 373, CD5 505. Seeing is 0.63" on SX guider, 0.70" on DX guider, 0.84" on DIMM.

10:00 UT SNR: CD2 269, CD4 439.

## UVa Snowbird

EM\* UHA 138 (UT 10:00-10:26)

10:00 UT Preset.

10:03 UT Starting science. Clear skies. Steve reported a timeout on SX switching from ND2 to ND0. On the PEPSI side, the progress bar continued to scroll back and forth. Switched to ND2 then back to ND0, which worked on both sides.

10:05 UT Hotspot guiding bumped the target off the fiber on SX. Aborted script and resent the preset on that side.

10:07 UT Restarting science.

10:11 UT SNR: CD1 58, CD4 115. Seeing is 0.63" on SX guider, 0.71" on DX guider, 0.86" on DIMM.

10:19 UT SNR: CD2 64, CD5 101.

10:26 UT SNR: CD3 91, CD6 100.

10:28 UT Looks like the most recent LAMPS readme wasn't uploaded. Doing so now.

## OSU LAMP

GDR3 1419893343127804928 (UT 10:40-11:35)

10:40 UT Preset.

10:43 UT Starting science. Seeing is 1.00" on SX guider 1.11" on DX guider, 0.95" on DIMM.  
Clear skies.

10:55 UT 18-degree twilight

11:03 UT SNR: CD2 50, CD4 64.

11:26 UT SNR: CD3 57, CD5 61.

11:28 UT 12-degree twilight

## OSU MWAbund

2MJ16342702+4210271 (UT 11:35-11:54)

11:35 UT Preset.

11:37 UT Both sides of GCS got stuck resetting the exposure time. Steve aborted and restarted them.

11:39 UT Resending preset.

11:41 UT SX GCS is stuck initializing guide thread.

11:42 UT Re-resending preset.

11:43 UT Starting science. Clear skies.

11:45 UT Seeing is 0.66" on SX guider, 0.72" on DX guider, 0.80" on DIMM.

11:54 UT SNR: CD2 226, CD4 419. Closing. Running PEPSI cals.