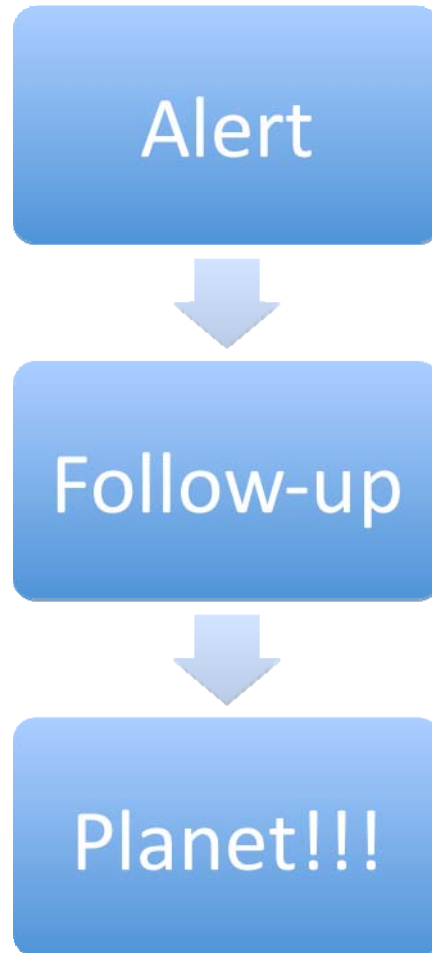


# Coordinated Efforts at MicroFUN – (An brief history on) How a Planet was Discovered

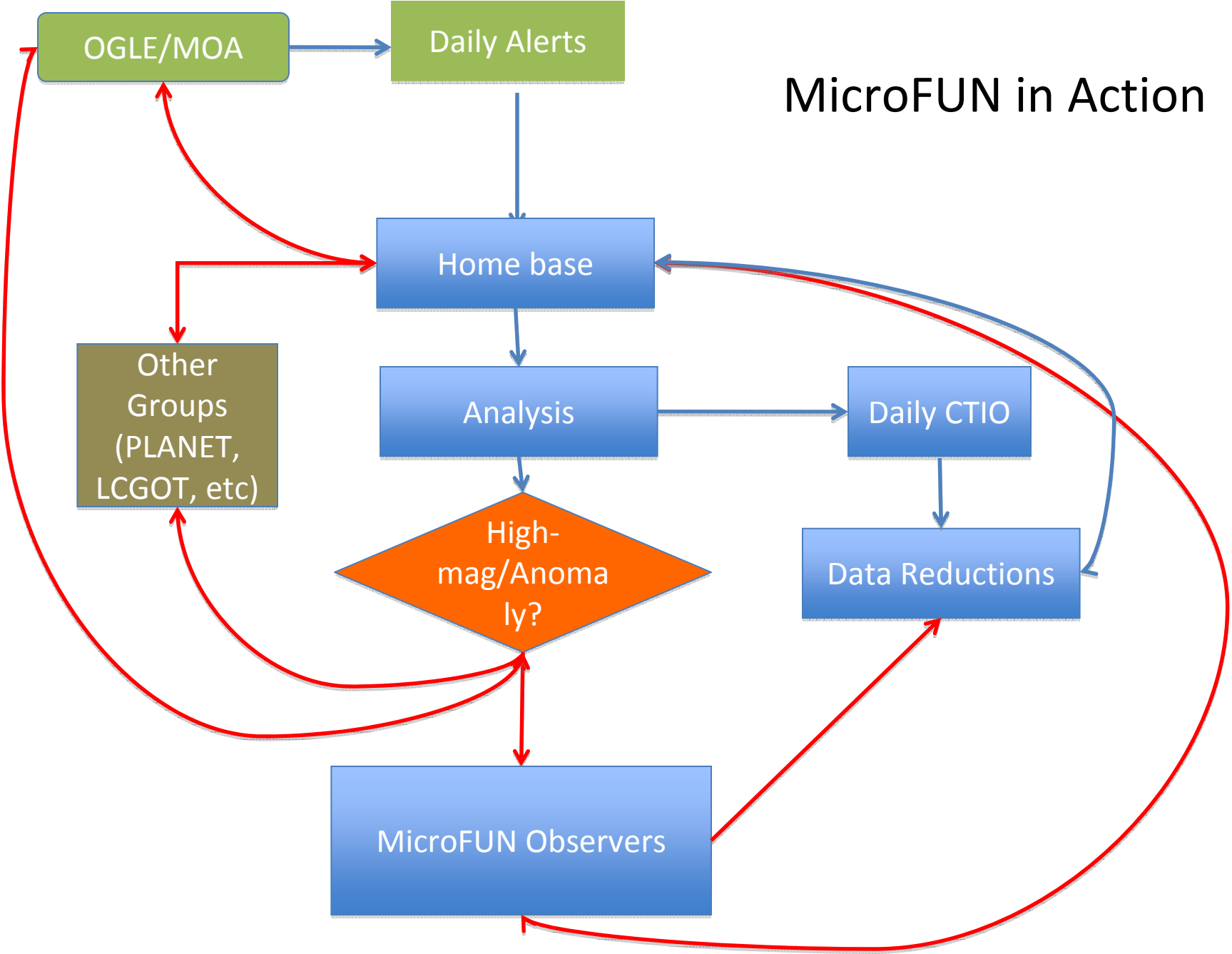
Subo Dong

The Ohio State University

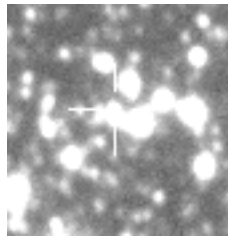
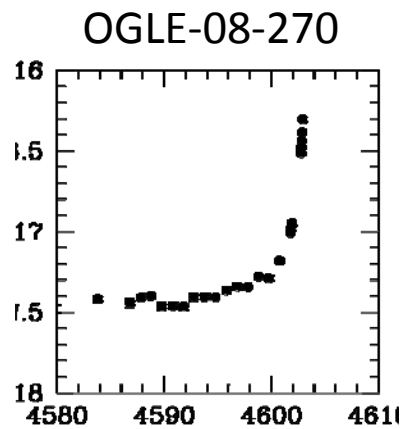
# Theoretically ...



# MicroFUN in Action

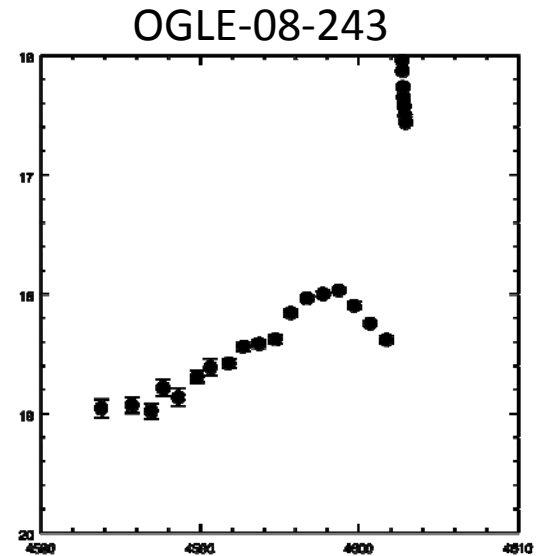


# May 16<sup>th</sup>, Prelude to the Discovery

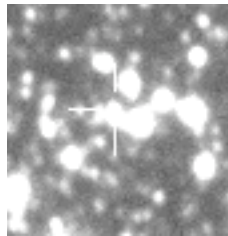
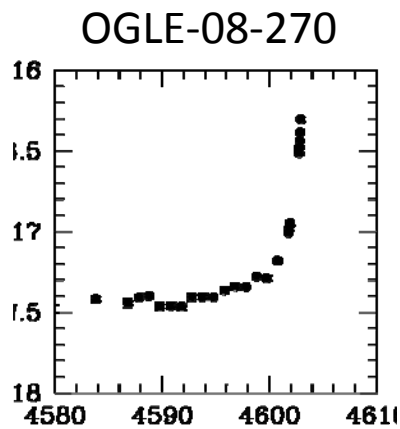


OB270,  
OB243  
anomaly!

UT 8:53  
OGLE



# May 16<sup>th</sup>, Prelude to the Discovery

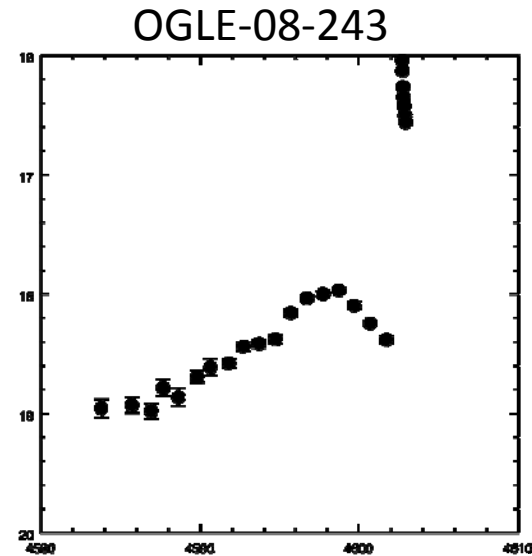


OB270,  
OB243  
anomaly!

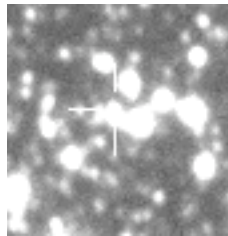
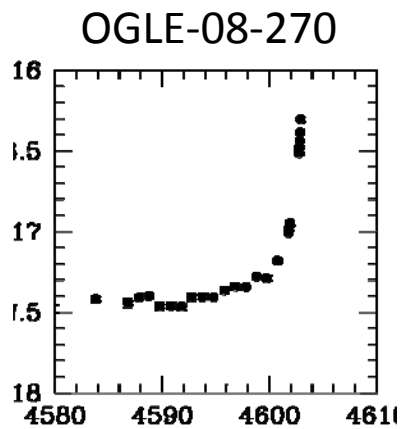
UT 8:53  
OGLE

OB243  
anomaly  
confirmed

UT 9:16  
lan(MOA)



# May 16<sup>th</sup>, Prelude to the Discovery



OB243 is binary,  
should we drop  
it? OB270 too  
crowded?

UT 10:35  
Andy

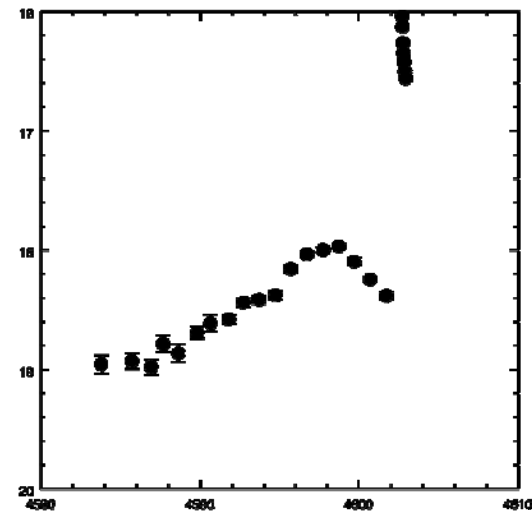
OB270,  
OB243  
anomaly!

UT 8:53  
OGLE

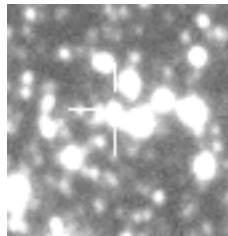
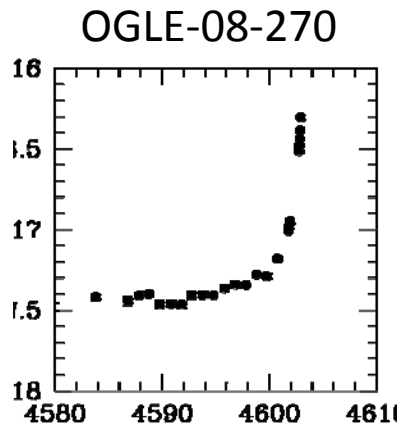
OB243  
anomaly  
confirmed

UT 9:16  
Ian(MOA)

OGLE-08-243



# May 16<sup>th</sup>, Prelude to the Discovery



UT 10:42  
Scott

OB243 is binary,  
should we drop  
it? OB270 too  
crowded?

Yeah, I agree on  
OB243, but 270  
is interesting.

UT 10:35  
Andy

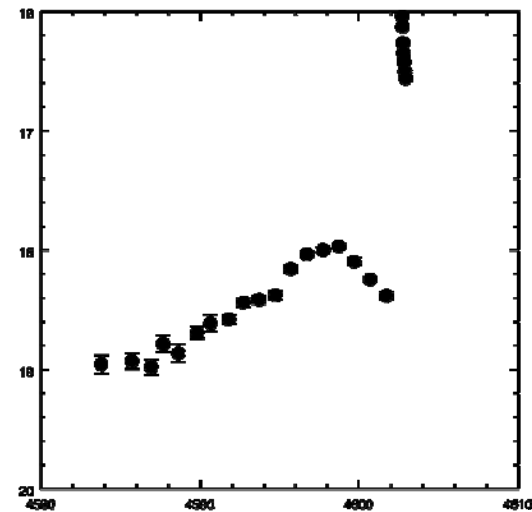
OB270,  
OB243  
anomaly!

OB243  
anomaly  
confirmed

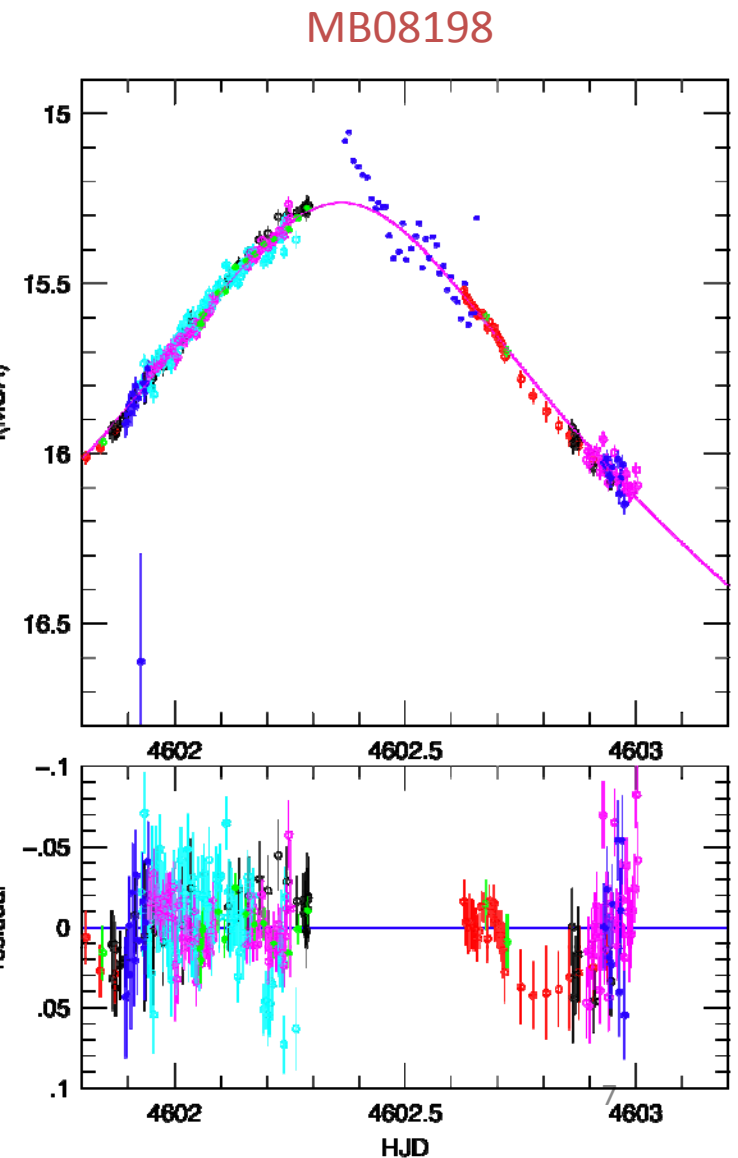
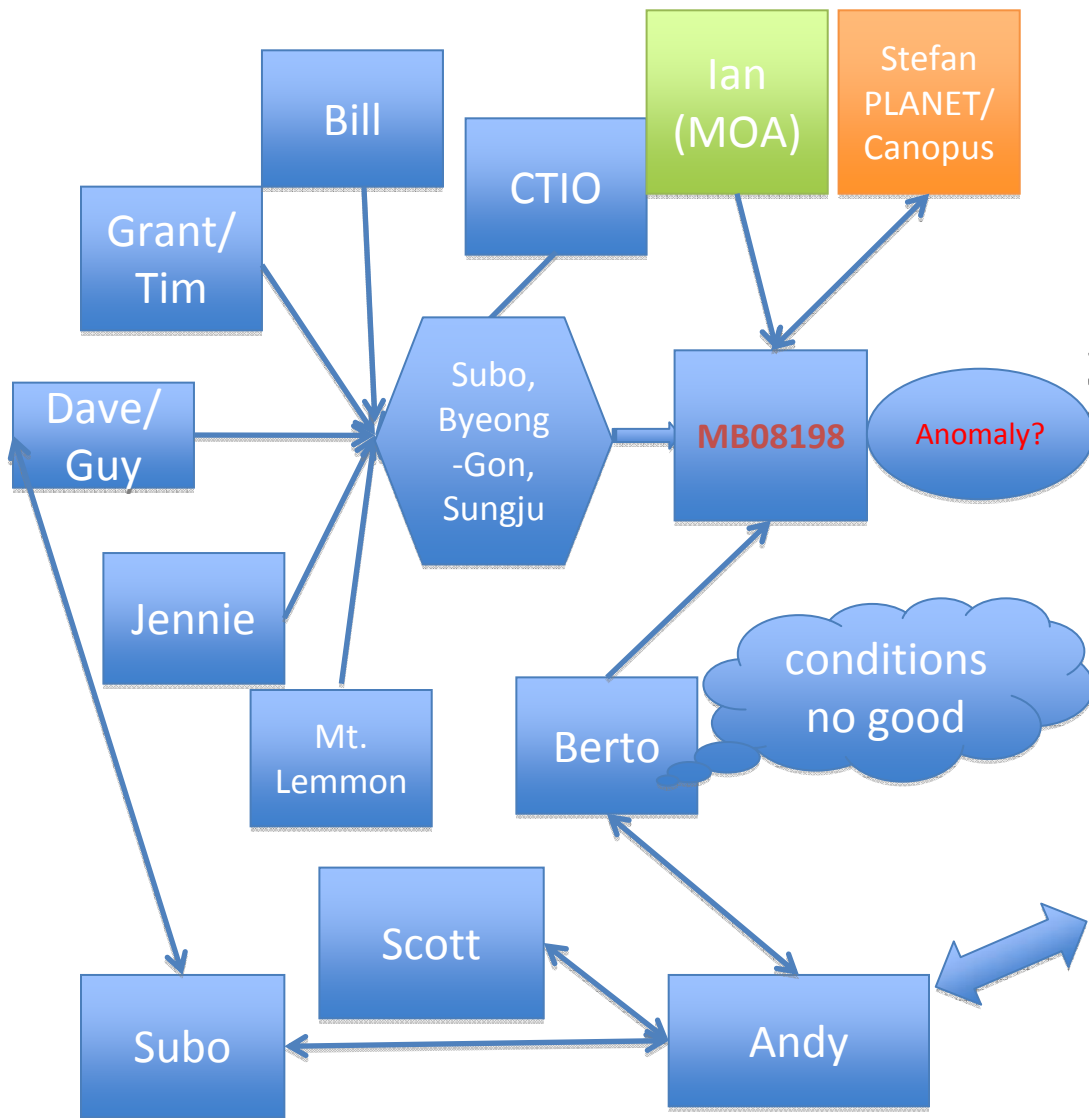
UT 8:53  
OGLE

UT 9:16  
Ian(MOA)

OGLE-08-243

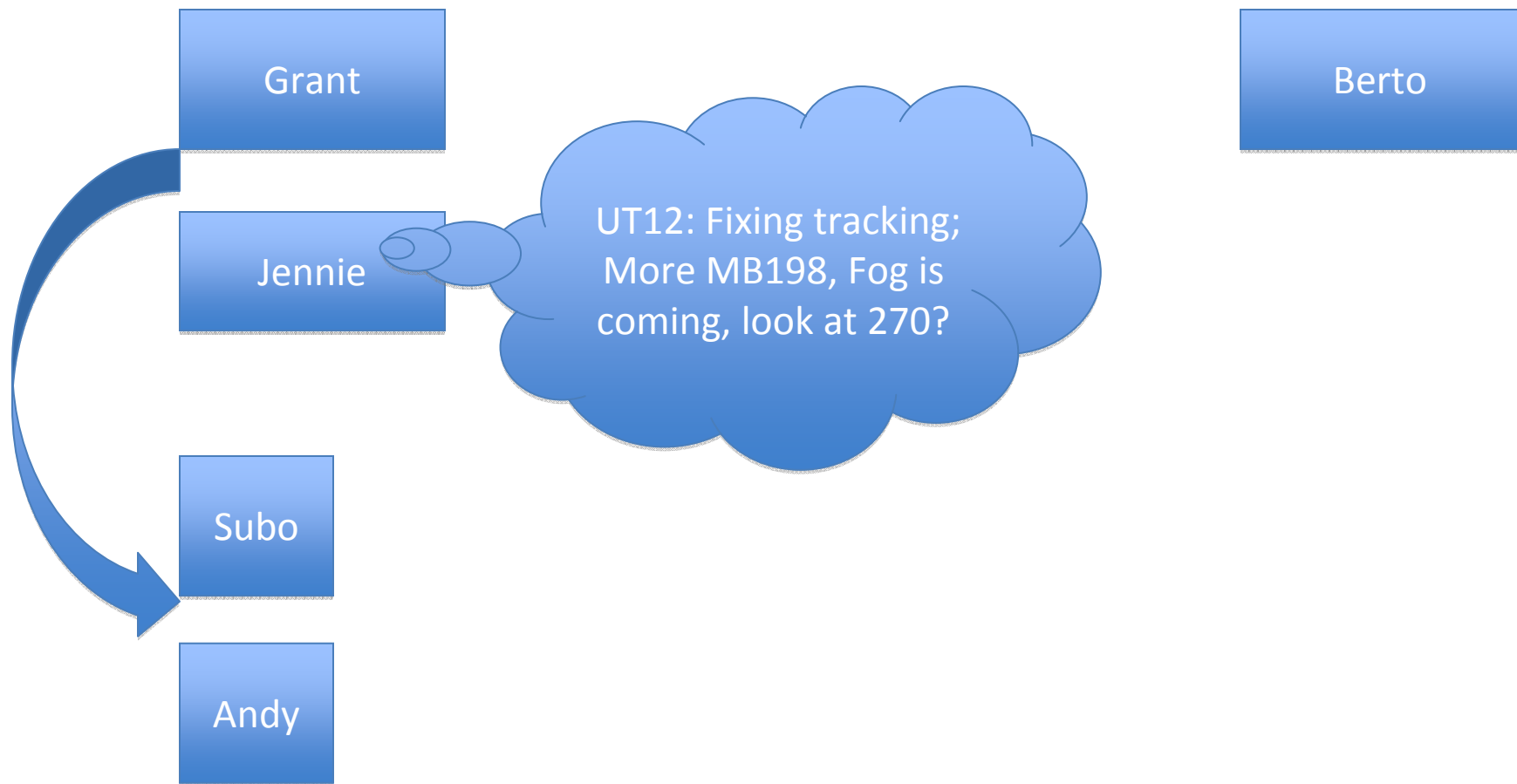


# May 16<sup>th</sup>, Prelude to the Discovery

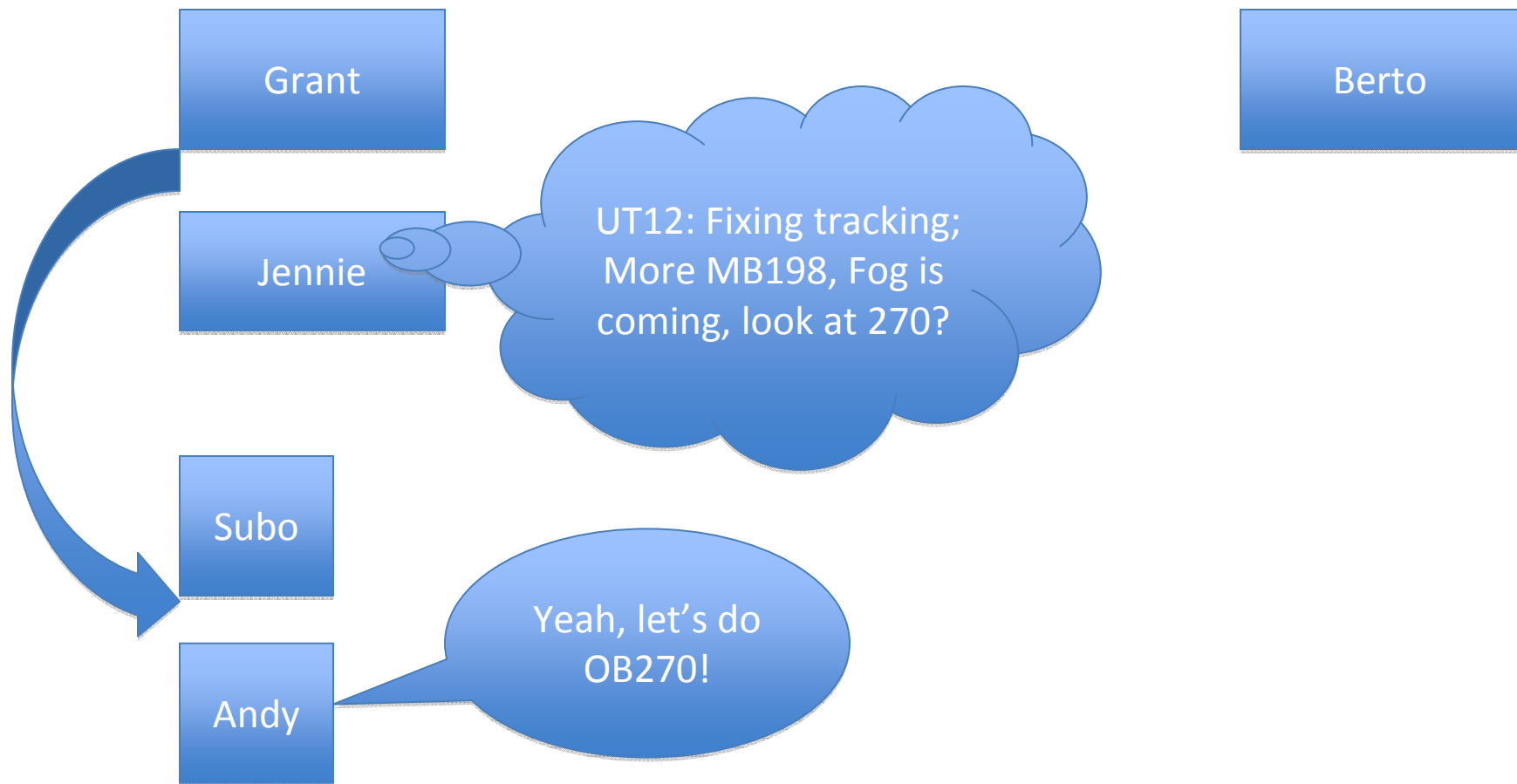




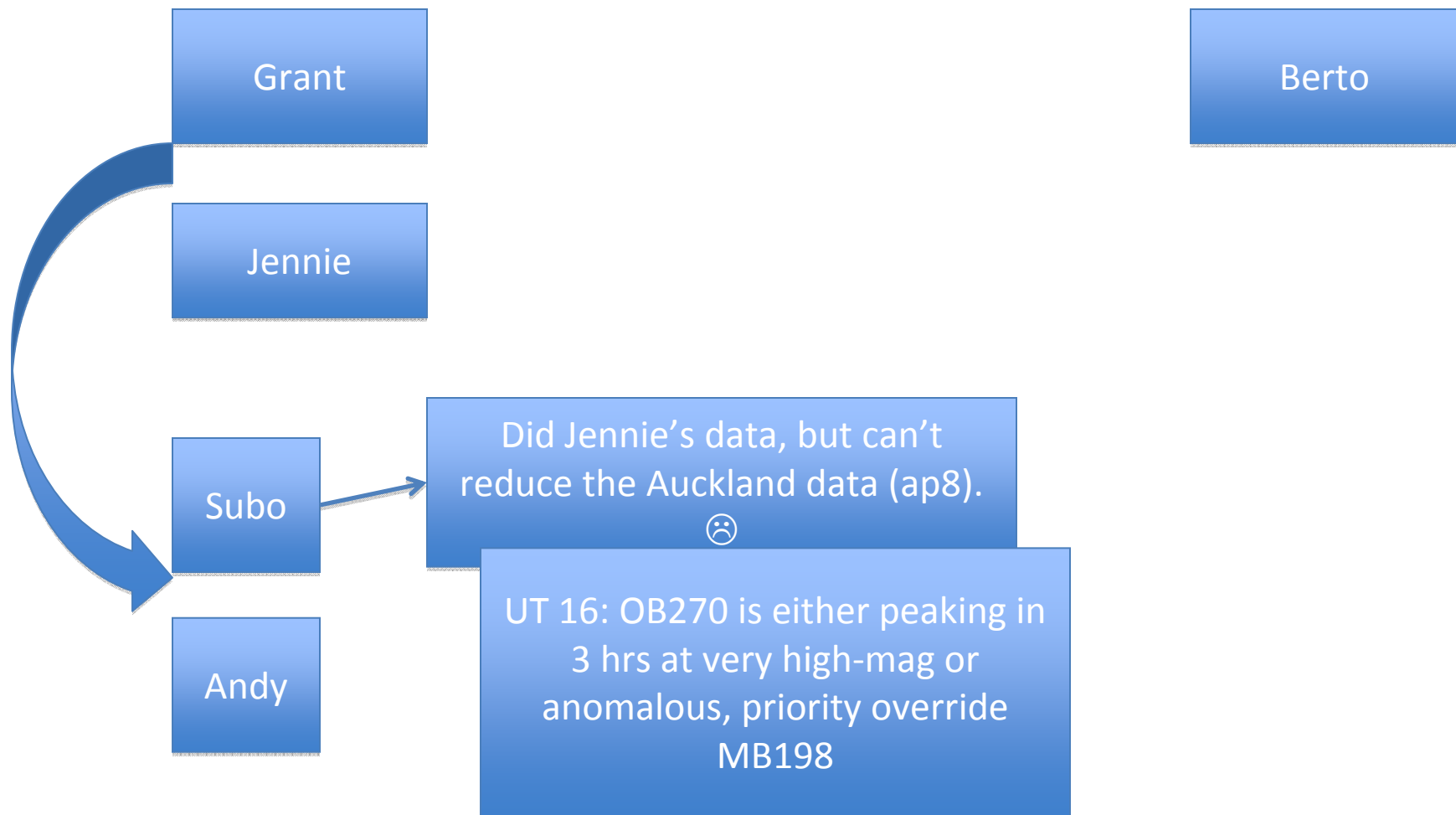
# May 16<sup>th</sup>, Prelude to the Discovery



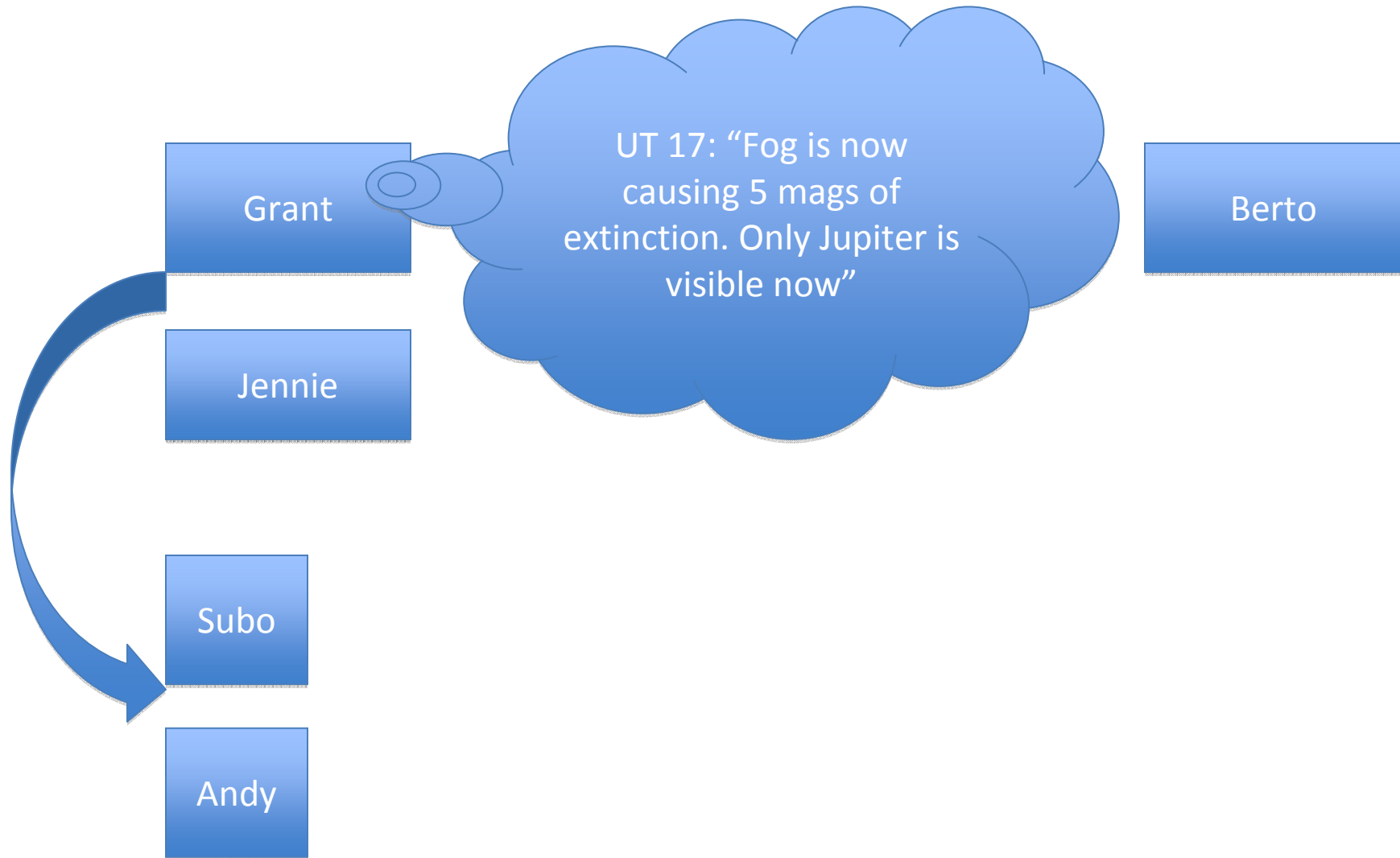
# May 16<sup>th</sup>, Prelude to the Discovery



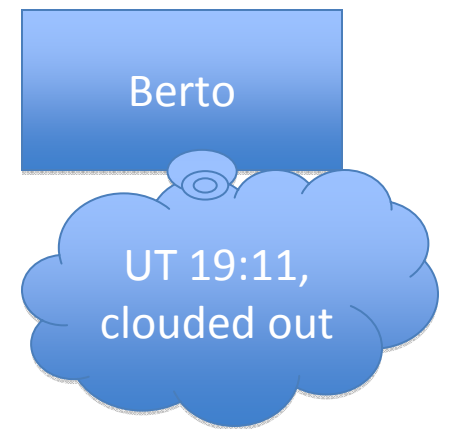
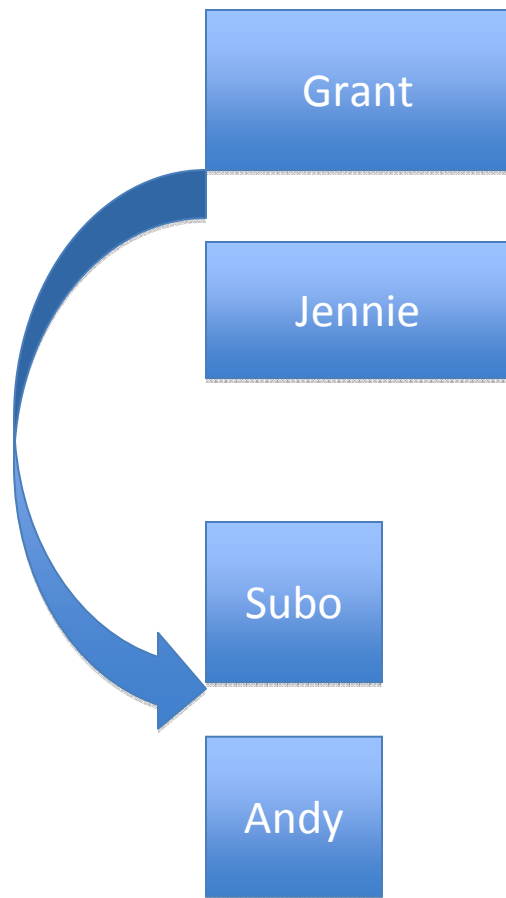
# May 16<sup>th</sup>, Prelude to the Discovery



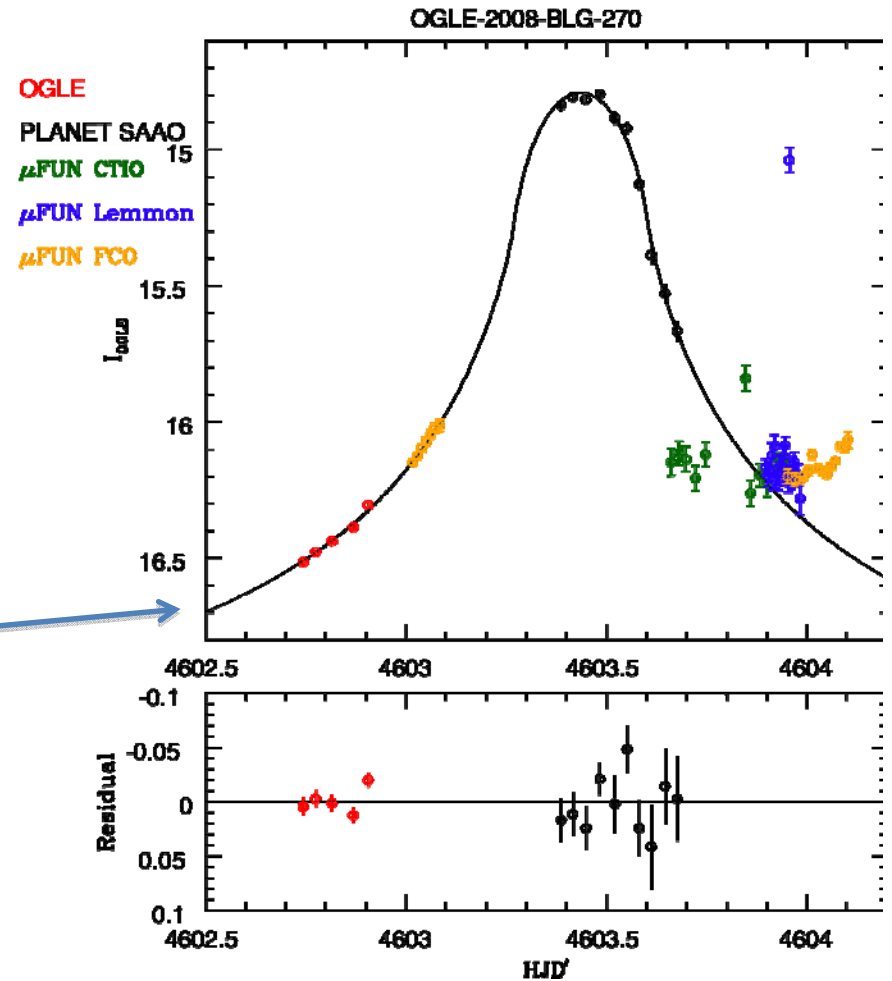
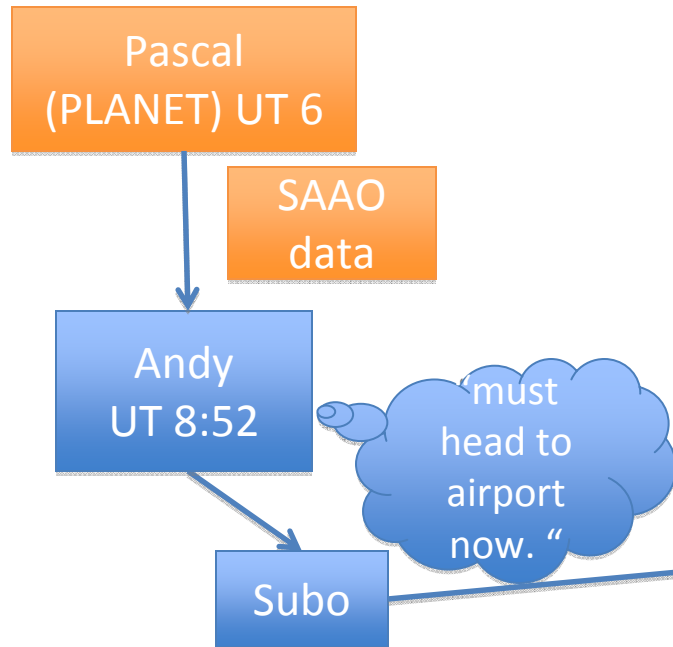
# May 16<sup>th</sup>, Prelude to the Discovery



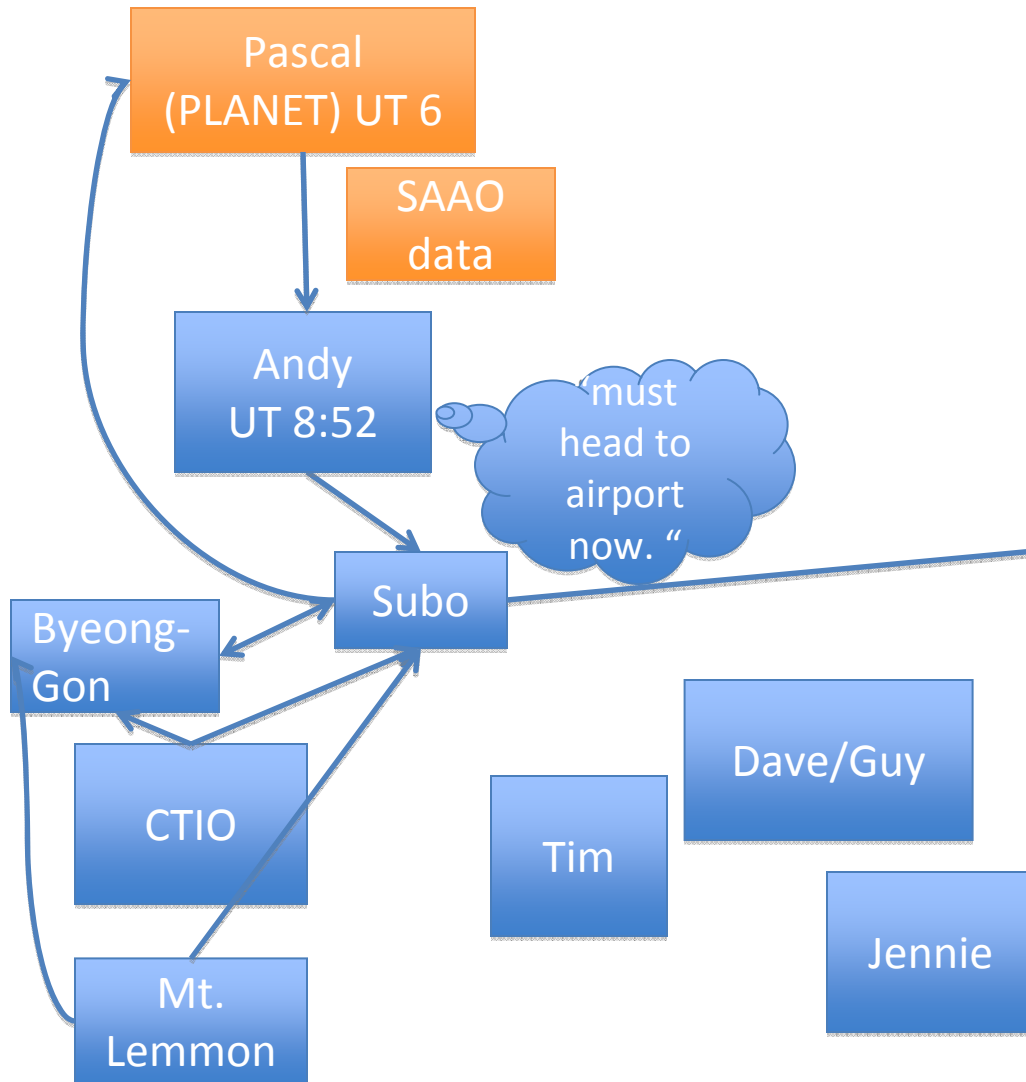
# May 16<sup>th</sup>, Prelude to the Discovery



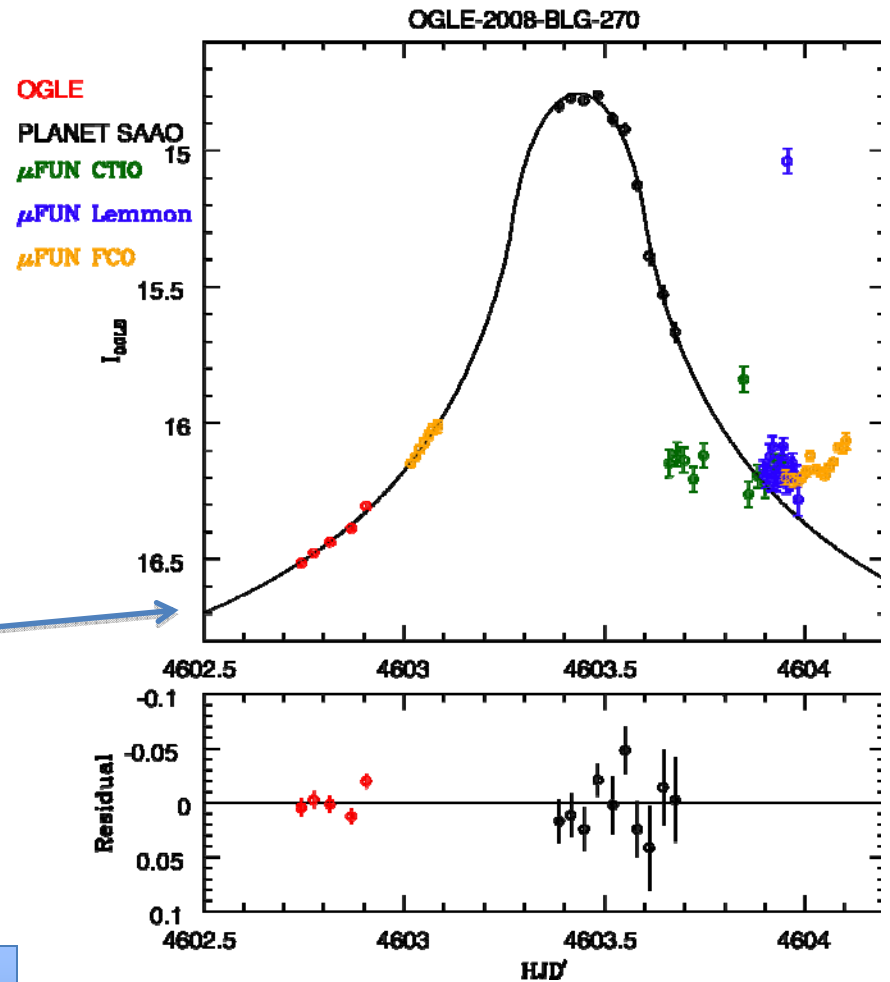
# May 17<sup>th</sup>, by the noon (US)



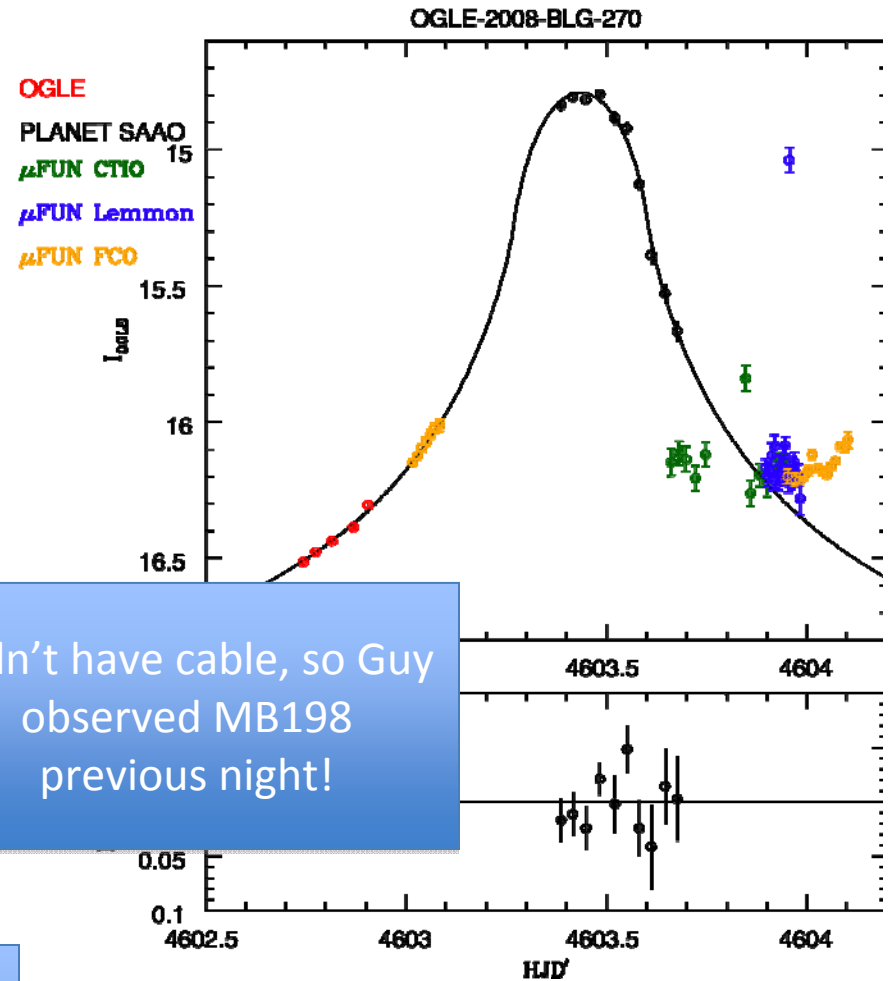
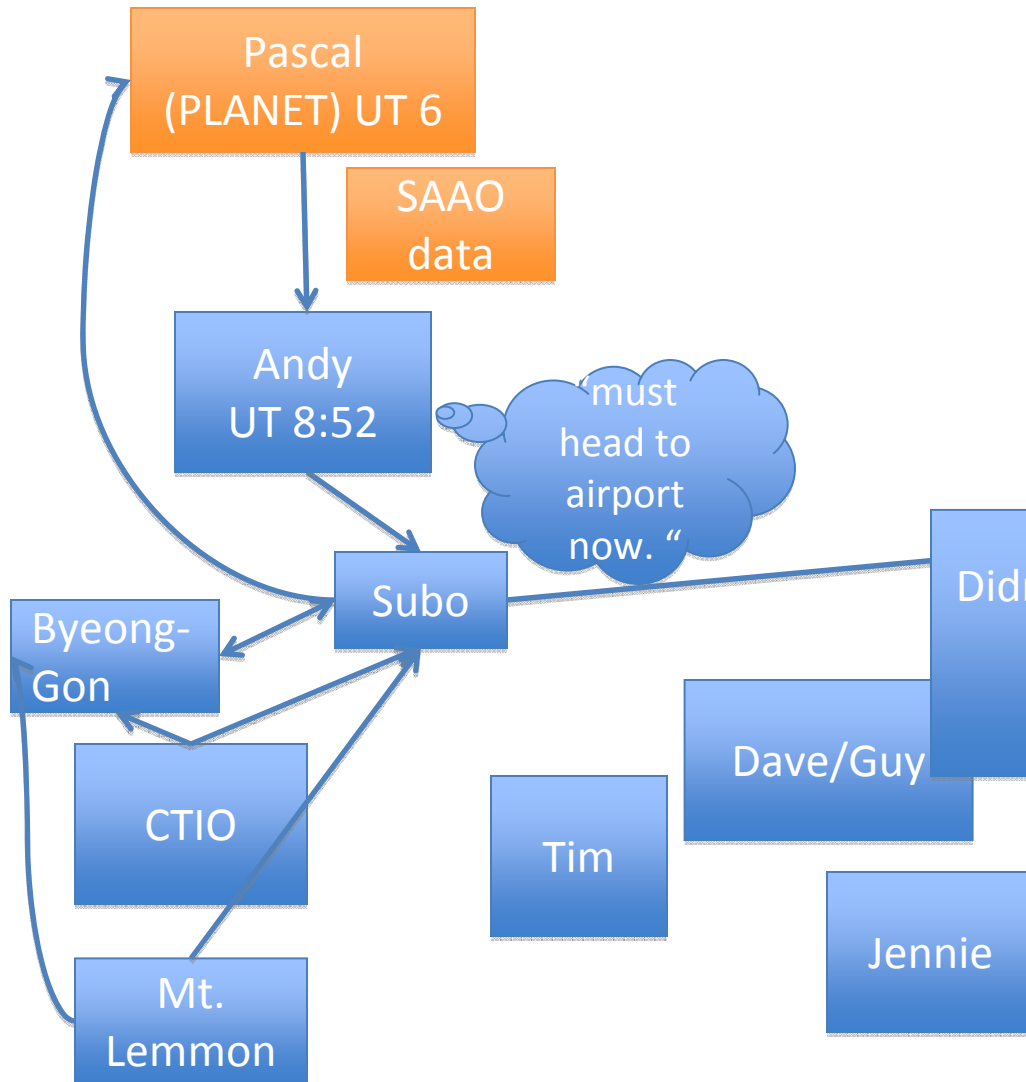
# May 17<sup>th</sup>, by the noon (US)



must head to airport now.

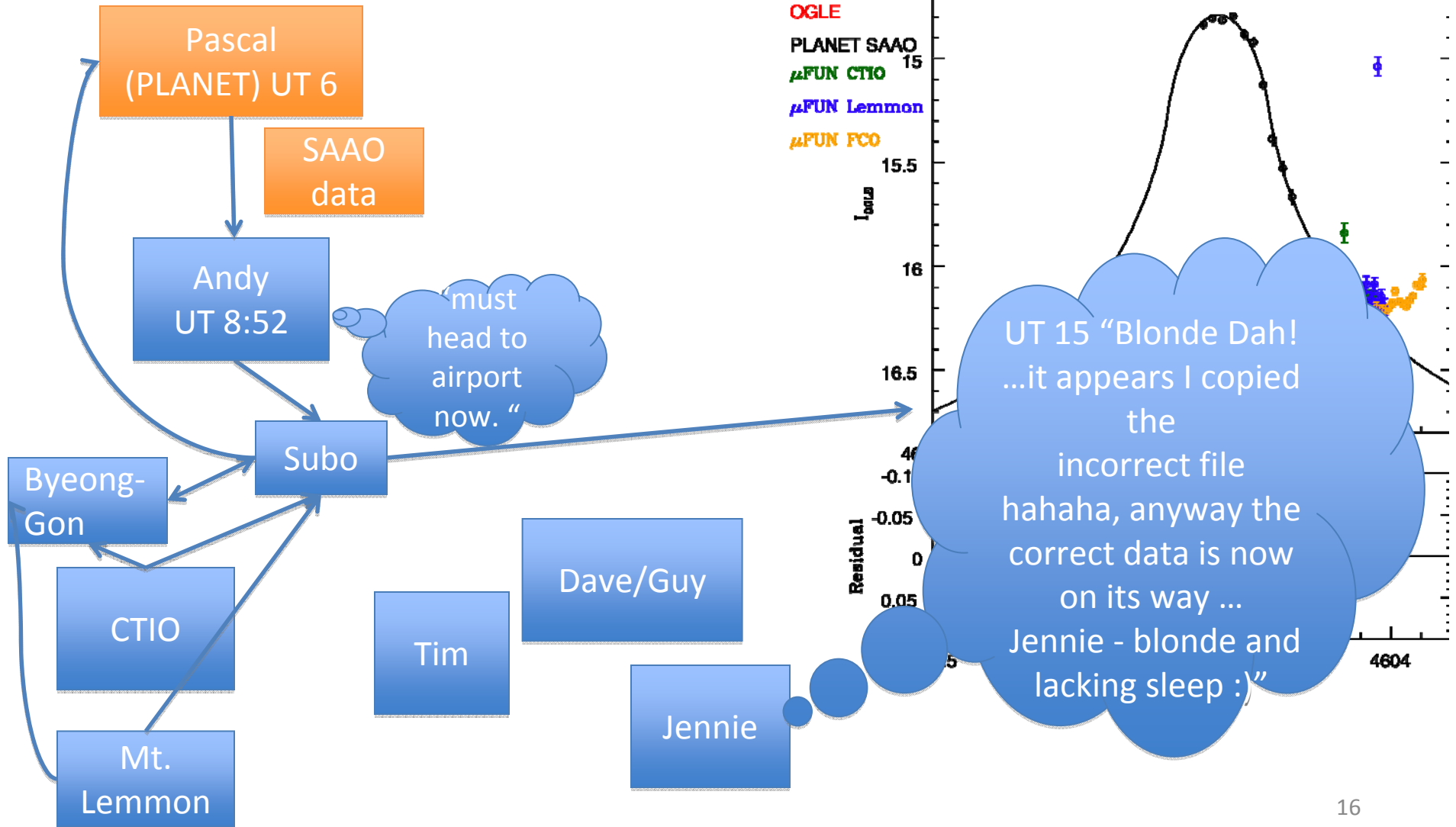


# May 17<sup>th</sup>, by the noon (US)

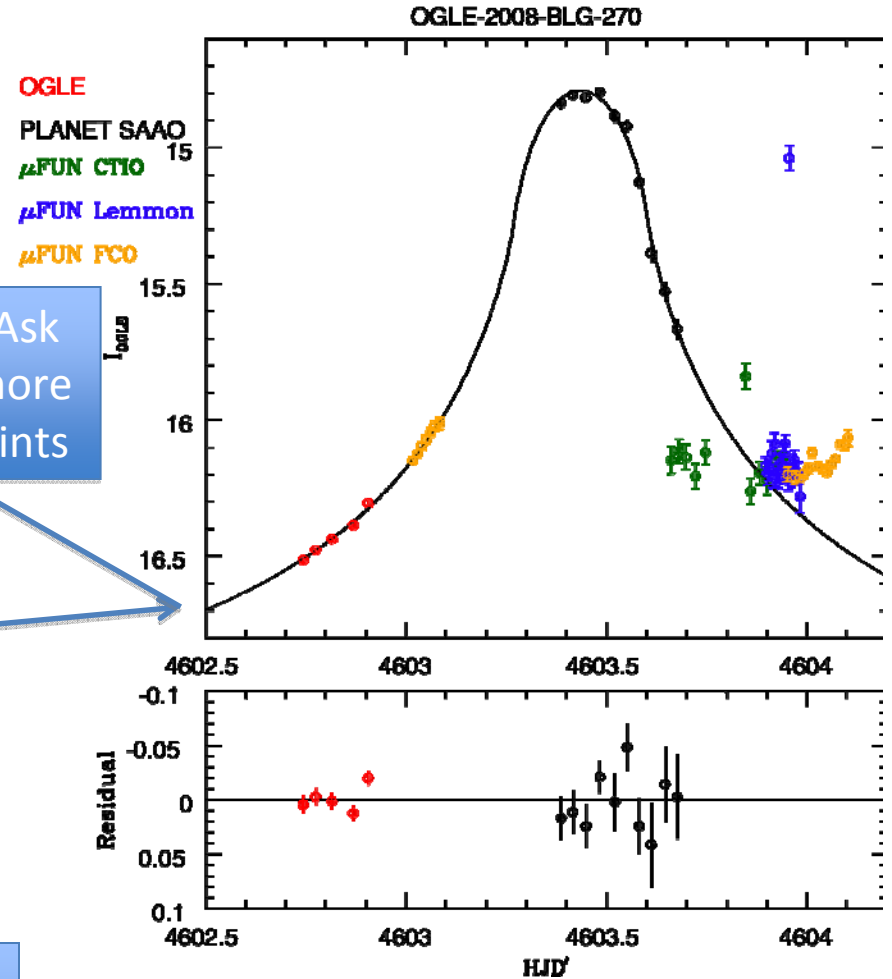
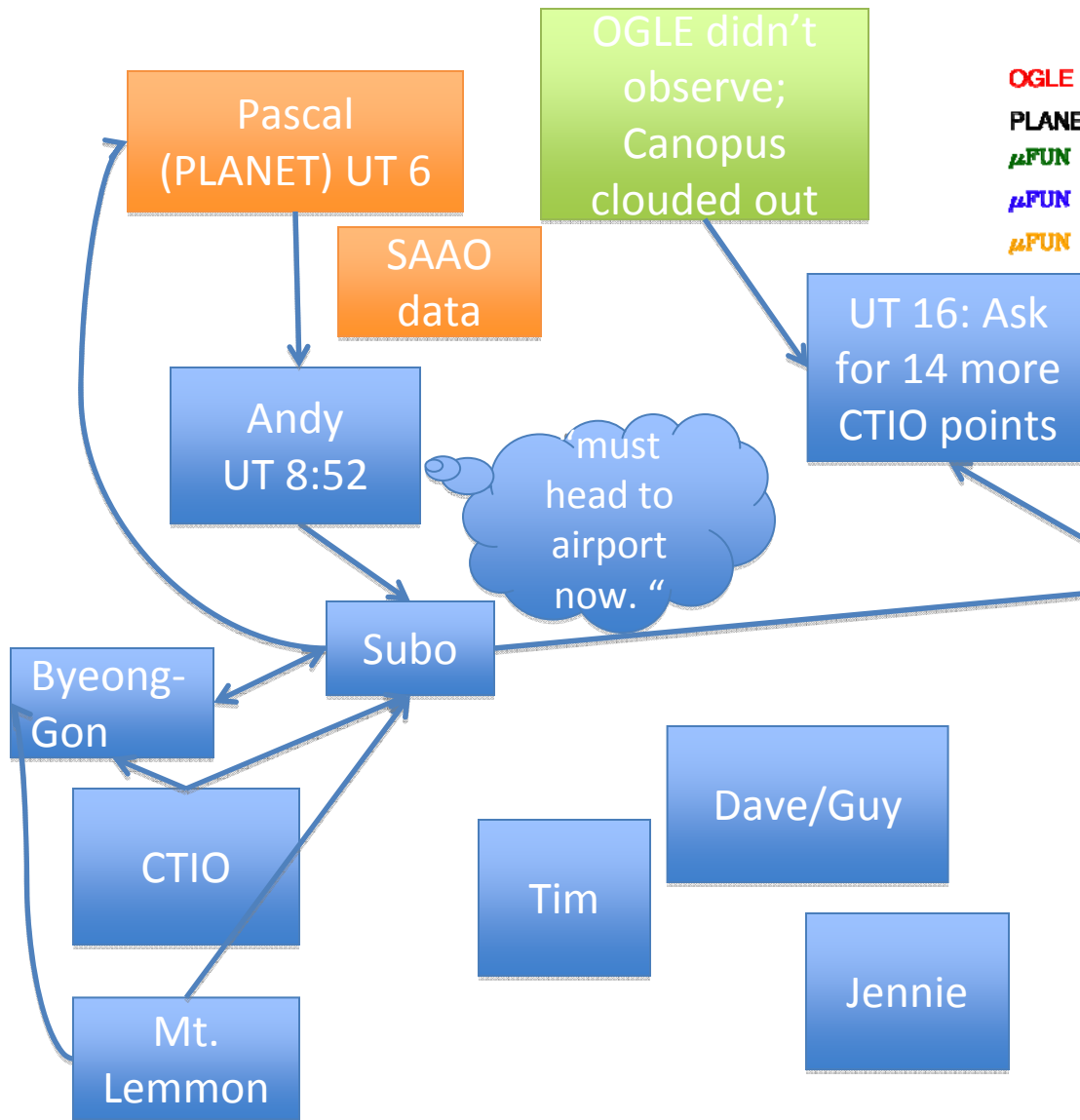




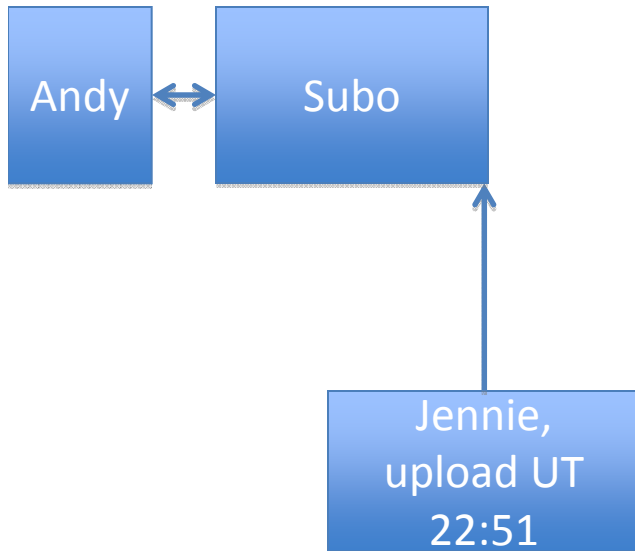
# May 17<sup>th</sup>, by the noon (US)



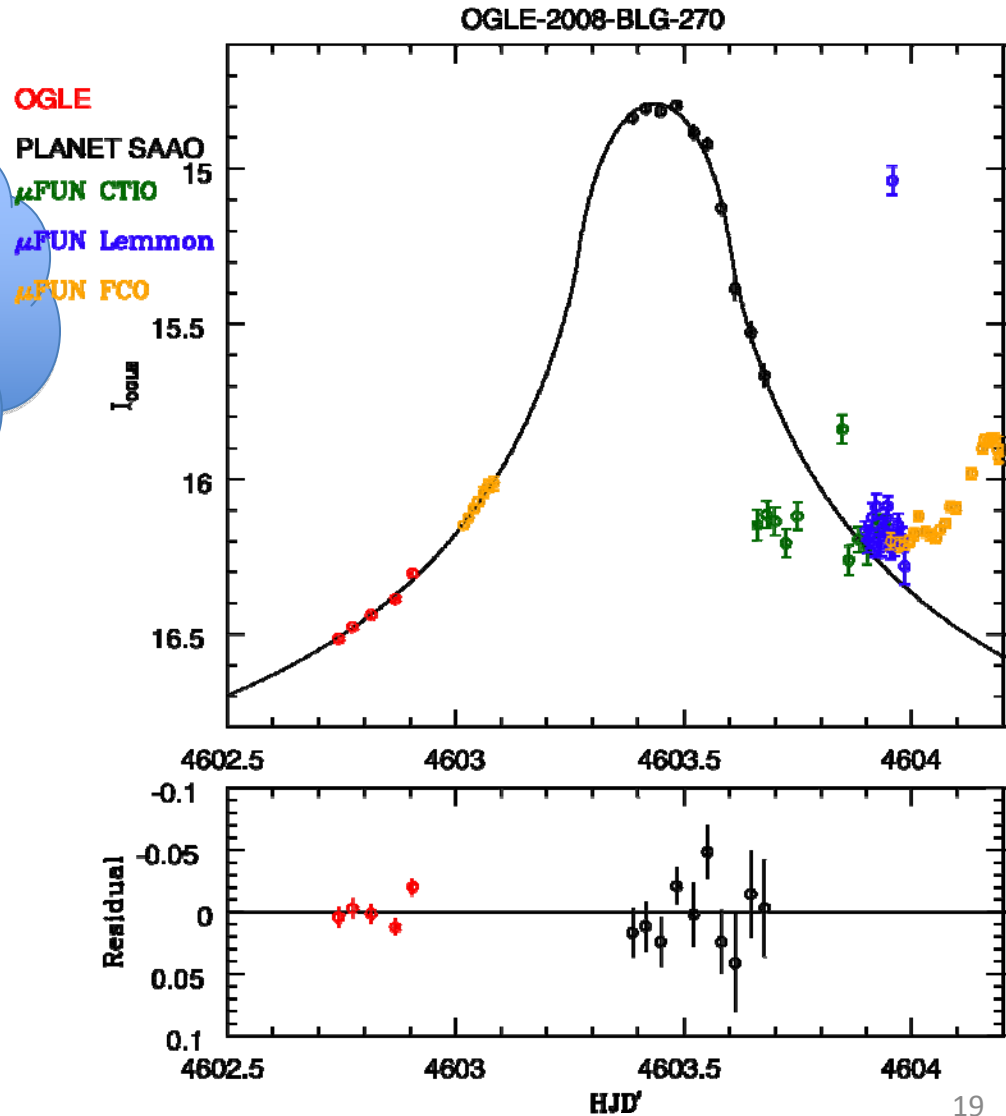
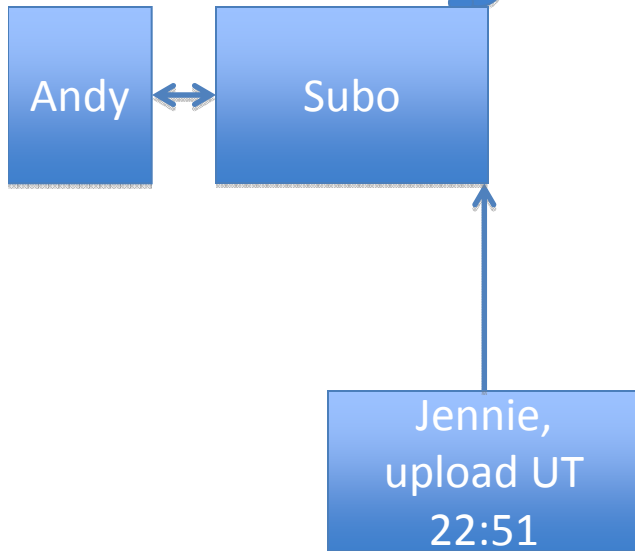
# May 17<sup>th</sup>, by the noon (US)



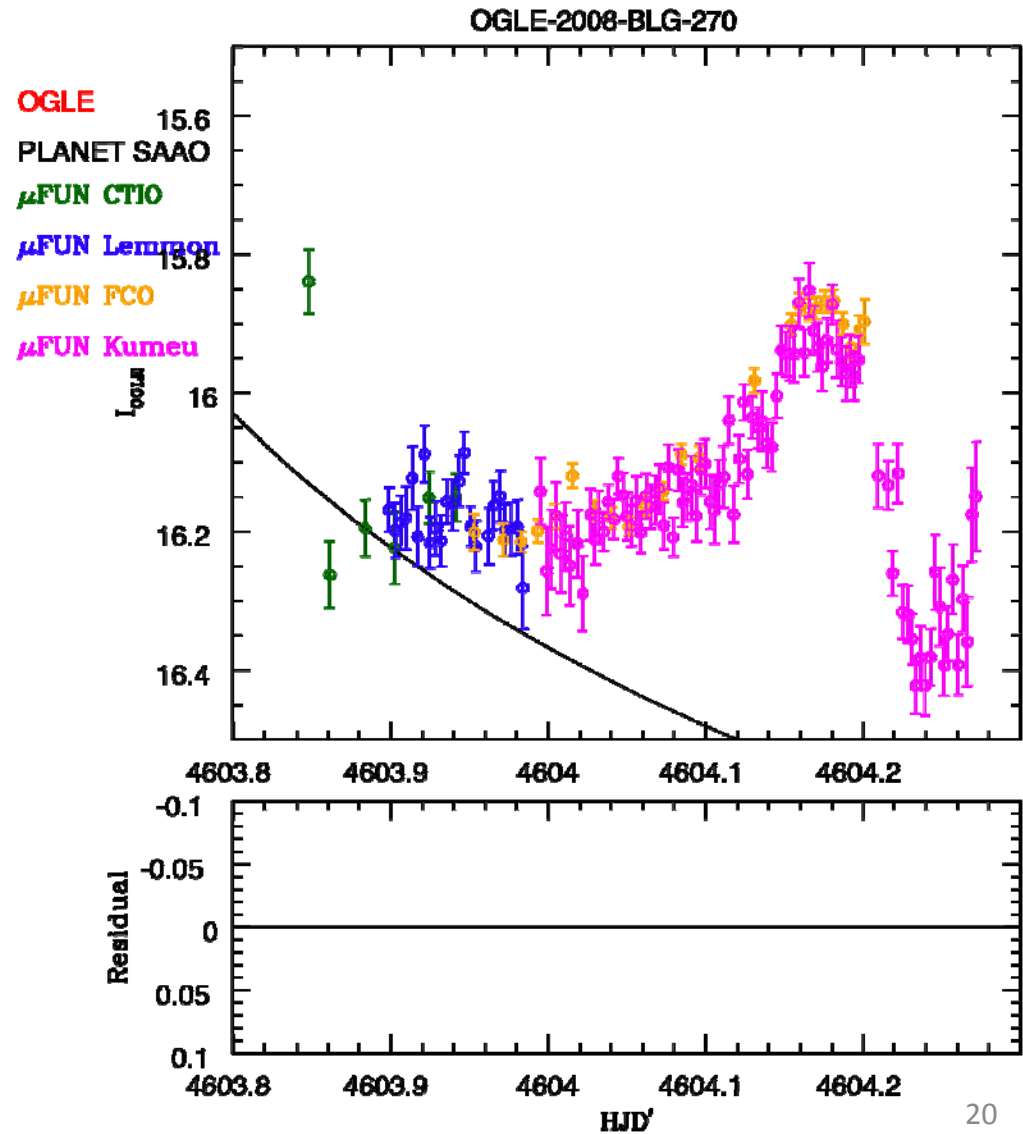
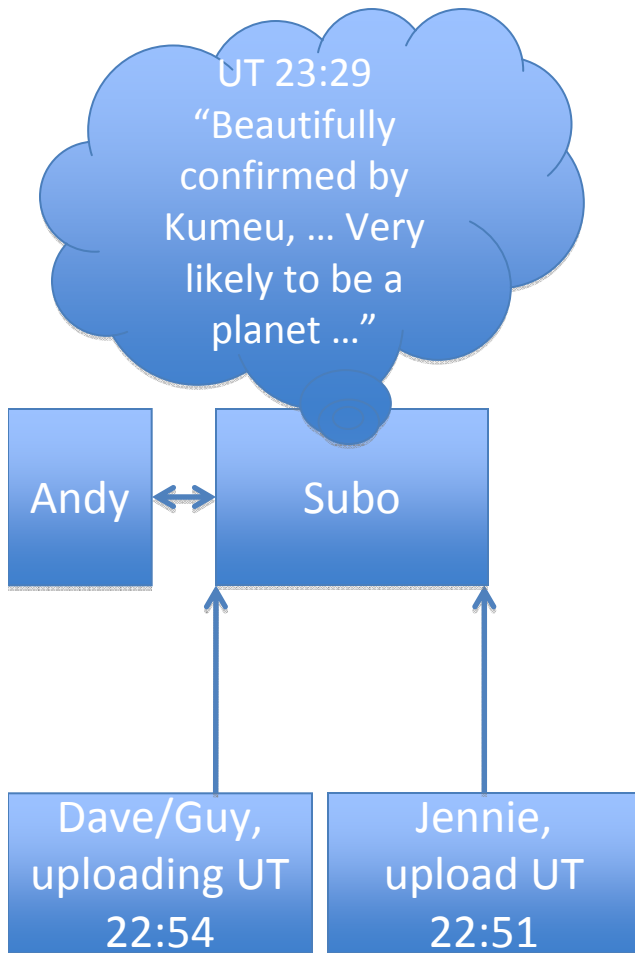
# May 17<sup>th</sup> , Planet!



# May 17<sup>th</sup>, Planet!

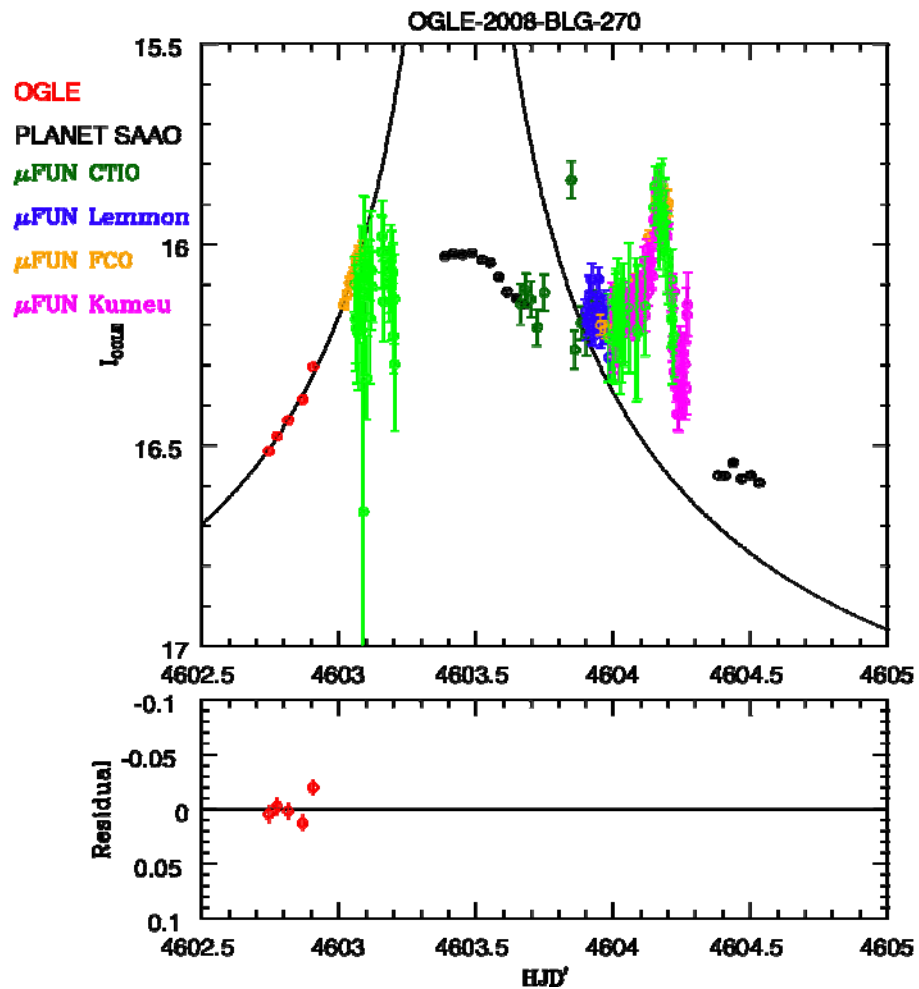
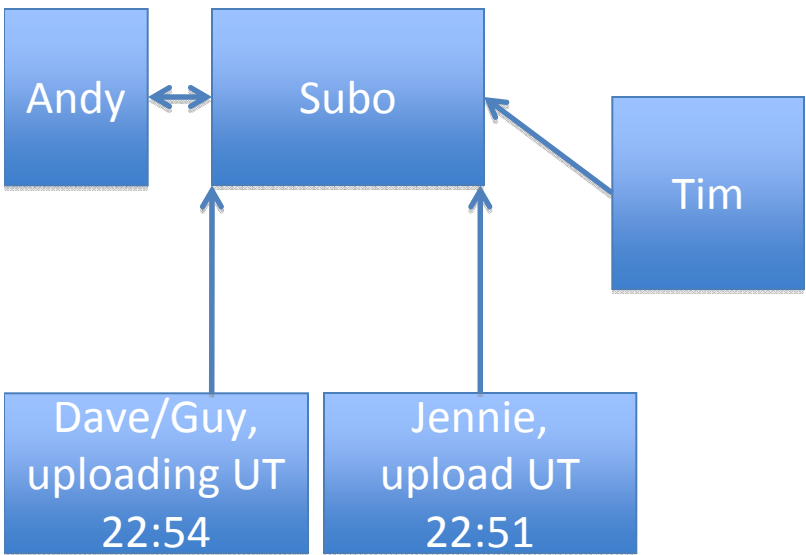


# May 17<sup>th</sup>, Planet!

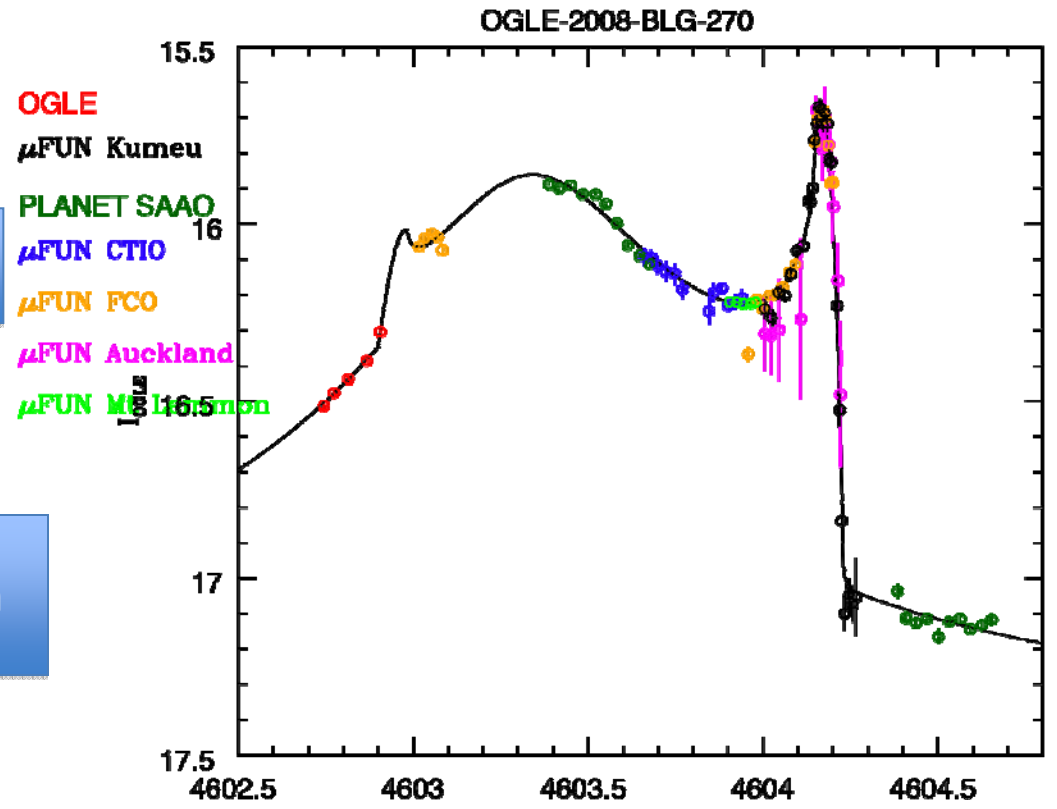
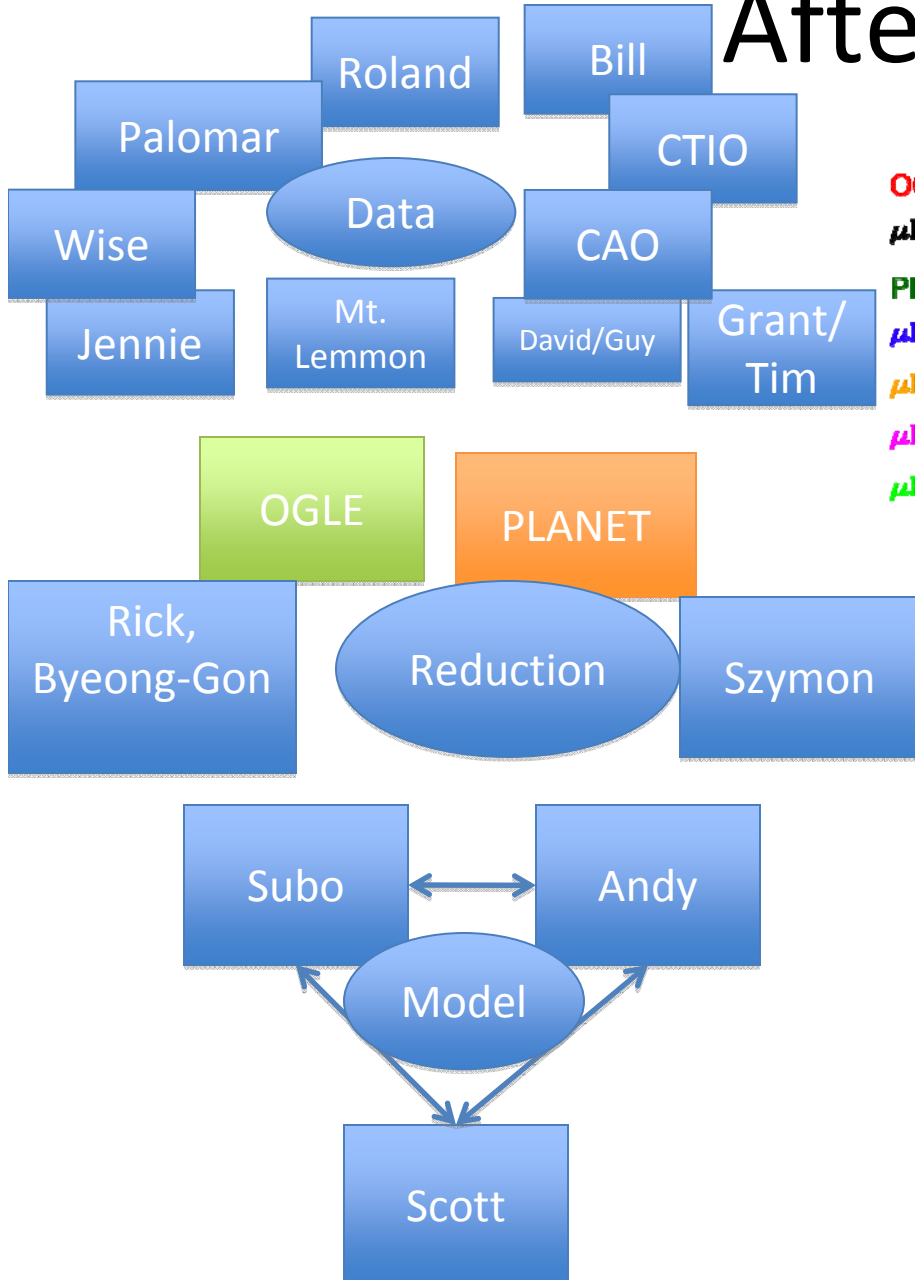


Request  
Override from  
CTIO

# May 17<sup>th</sup>, Planet!



# Aftermath



May 27th

# Coordination

- Conclusions:
  - I wish I don't have to sleep
  - Have a wristwatch running UT
  - Maybe everyone should try Dave's coffee while observing?

from David Moorhouse <acrux@orcon.net.nz>  
to Subo Dong [dong@astronomy.ohio-state.edu](mailto:dong@astronomy.ohio-state.edu)

Special observations require the right type of coffee I think we have some very noisy non-normalized data on the left hand side.

Isn't this a planet???

